


APP CRS	Rwy Idg	<b>10200</b>
<b>258°</b>	TDZE	<b>926</b>
	Apt Elev	<b>944</b>

# RNAV (RNP) Z RWY 26L

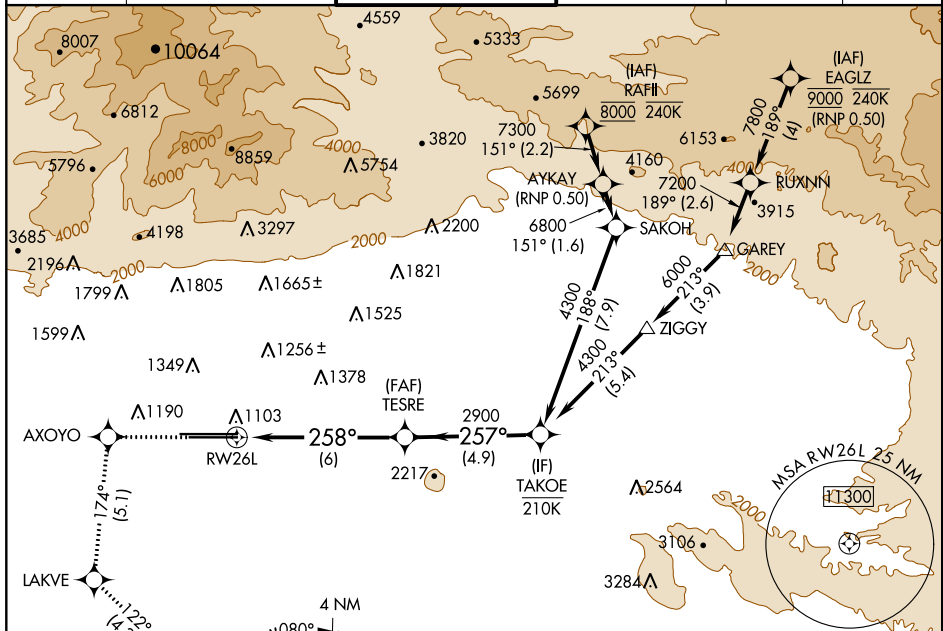
ONTARIO INTL (ONT)

**▽** For uncompensated Baro-VNAV systems, procedure NA below 1°C (34°F) or above 54°C (130°F). GPS required. For inop ALSF, increase RNP 0.30 all Cats visibility to 1½ SM.

**ALSF-2** 

**MISSED APPROACH:** Climb to 3400 direct AXOYO on track 174° to LAKVE on track 122° to MRIAM and on track 079° to ADRYN and hold.

D-ATIS <b>124.25</b>	SOCAL APP CON <b>127.0 318.2</b>	ONTARIO TOWER <b>120.6 360.775</b>	GND CON <b>121.9 257.8</b>	CLNC DEL <b>118.1</b>	CPDLC
-------------------------	-------------------------------------	---------------------------------------	-------------------------------	--------------------------	-------

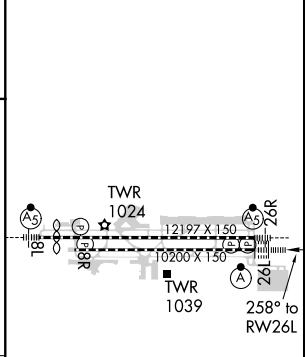
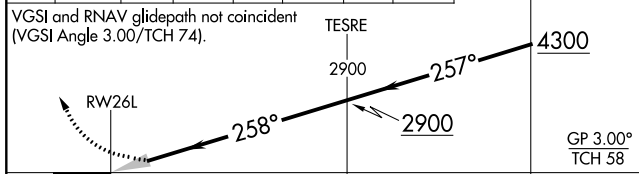


SW-3, 10 OCT 2019 to 07 NOV 2019

SW-3, 10 OCT 2019 to 07 NOV 2019

ELEV 944	 TDZE 926
----------	--

3400	↑ AXOYO	↖ LAKVE	↖ MRIAM	↖ ADRYN
	tr 174°	tr 122°	tr 079°	



CATEGORY	A	B	C	D
RNP 0.30 DA	1319/45		393 (400-7%)	

**AUTHORIZATION REQUIRED**

TDZ/CL Rws 8L and 26L  
HIRL Rws 8L-26R and 8R-26L