


APP CRS	Rwy Idg	12197
	TDZE	932
258°	Apt Elev	944

RNAV (RNP) Z RWY 26R

ONTARIO INTL (ONT)

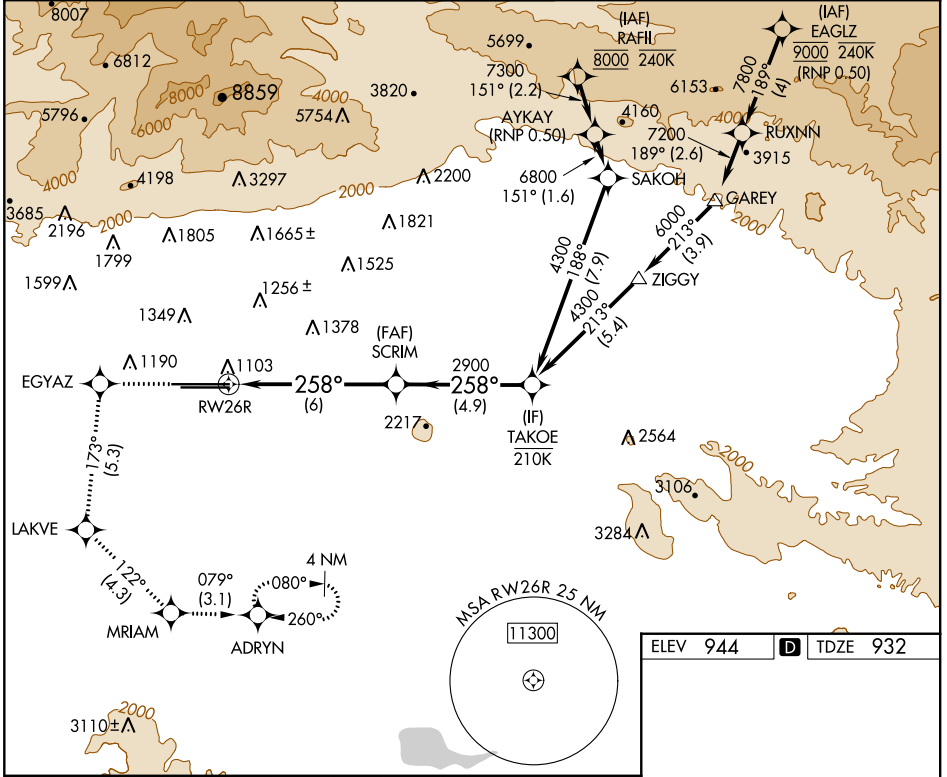
▼ For uncompensated Baro-VNAV systems, procedure NA below 1°C (34°F) or above 54°C (130°F). GPS required.

MALSR



MISSED APPROACH: Climb to 3400 direct EGYAZ and on track 173° to LAKVE and on track 122° to MARIAM and on track 079° to ADRYN and hold.

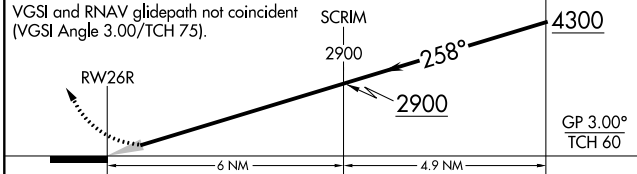
D-ATIS 124.25	SOCAL APP CON 127.0 318.2	ONTARIO TOWER 120.6 360.775	GND CON 121.9 257.8	CLNC DEL 118.1	CPDLC
-------------------------	-------------------------------------	---------------------------------------	-------------------------------	--------------------------	-------



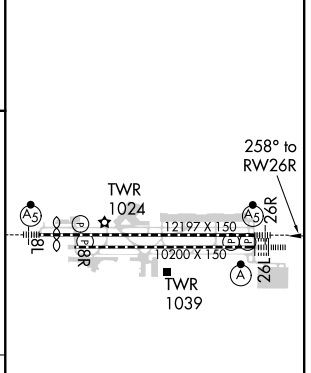
SW-3, 10 OCT 2019 to 07 NOV 2019

SW-3, 10 OCT 2019 to 07 NOV 2019

3400	EGYAZ	tr 173°	LAKVE	tr 122°	MARIAM	tr 079°	ADRYN
------	-------	---------	-------	---------	--------	---------	-------



ELEV 944	D	TDZE 932
----------	----------	----------



CATEGORY	A	B	C	D
RNP 0.30 DA	1324/40		392 (400-¾)	

AUTHORIZATION REQUIRED

TDZ/CL Rwys 8L and 26L
HIRL Rwys 8L-26R and 8R-26L