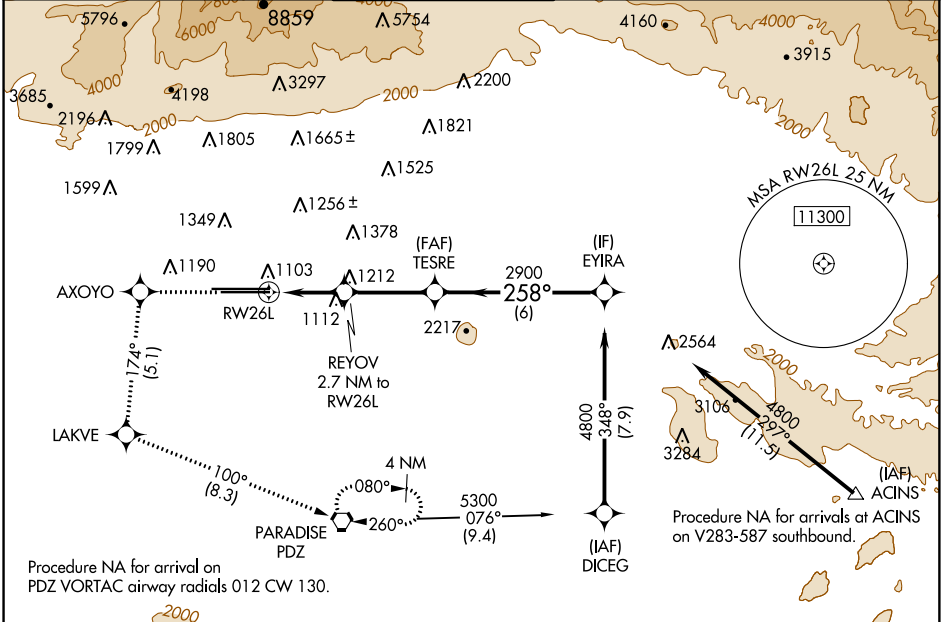


WAAS CH <b>90407</b> W <b>26B</b>	APP CRS <b>258°</b>	Rwy Idg <b>10200</b> TDZE <b>926</b> Apt Elev <b>944</b>
---	------------------------	--

# RNAV (GPS) Y RWY 26L

ONTARIO INTL (ONT)

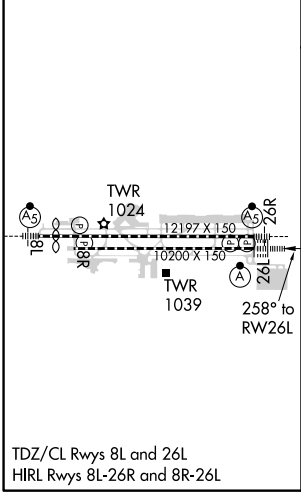
▼ For uncompensated Baro-VNAV systems, procedure NA below 2°C (36°F) or above 54°C (130°F). Circling NA north of Rwy 8L-26R. DME/DME RNP-0.3 NA.	ALSIF-2	MISSED APPROACH: Climb to 3700 direct AXOYO and on track 174° to LAKVE and on track 100° to PDZ VORTAC and hold.			
D-ATIS <b>124.25</b>	SOCAL APP CON <b>127.0 318.2</b>	ONTARIO TOWER <b>120.6 360.775</b>	GND CON <b>121.9 257.8</b>	CLNC DEL <b>118.1</b>	CPDLC



SW-3, 10 OCT 2019 to 07 NOV 2019

SW-3, 10 OCT 2019 to 07 NOV 2019

ELEV 944	<b>D</b>	TDZE 926
----------	----------	----------



3700	AXOYO	tr 174°	LAKVE	tr 100°	PDZ	VGSI and RNAV glidepath not coincident (VGSI Angle 3.00/TCH 74).	
						TESRE	EYIRA
*LNAV only		REYOV 2.7 NM to RWY 26L		2900	4800		
		*1.2 NM to RWY 26L		1840*	2900	258°	GP 3.00° TCH 58
		1.2 NM	1.5 NM	3.3 NM	6 NM		
CATEGORY		A	B	C	D		
LPV DA			1126/24	200 (200-½)			
LNAV/VNAV DA			1264/30	338 (400-⅝)			
LNAV MDA		1380/24	454 (500-½)	1380/45	454 (500-⅔)		
<b>C</b> CIRCLING		1400-1	456 (500-1)	1500-1½	556 (600-1½)	1540-2	596 (600-2)