


WAAS CH 53406 W26A	APP CRS 258°	Rwy Idg 12197 TDZE 932 Apt Elev 944
--	------------------------	--

RNAV (GPS) Y RWY 26R

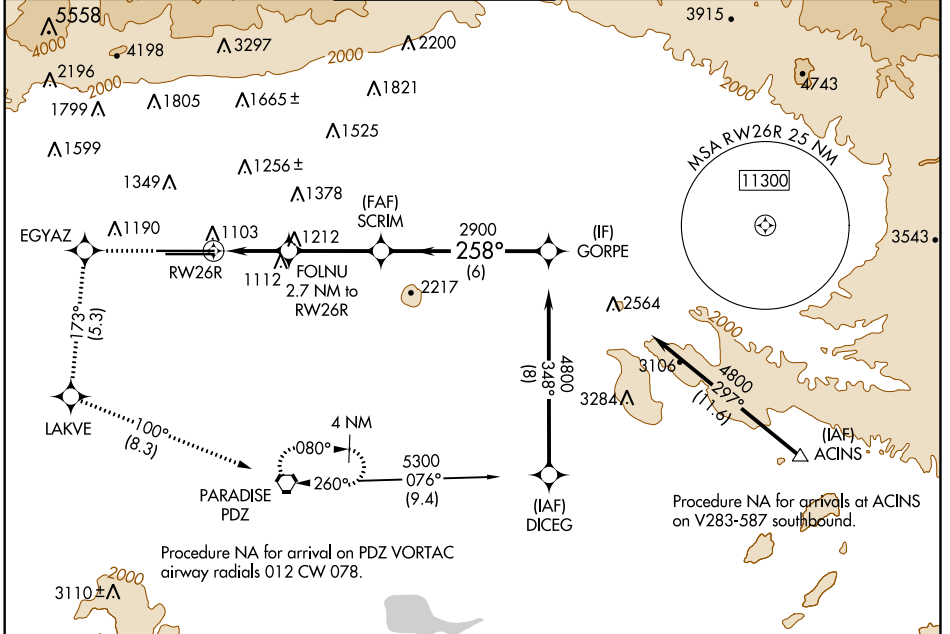
ONTARIO INTL (ONT)

⚠ For uncompensated Baro-VNAV systems, procedure NA below 2°C (36°F) or above 54°C (130°F). Circling NA north of Rwy 8L-26R. DME/DME RNP-0.3 NA.

MALS 

MISSED APPROACH: Climb to 3700 direct EGYAZ and on track 173° to LAKVE and on track 100° to PDZ VORTAC and hold.

D-ATIS 124.25	SOCAL APP CON 127.0 318.2	ONTARIO TOWER 120.6 360.775	GND CON 121.9 257.8	CLNC DEL 118.1	CPDLC
-------------------------	-------------------------------------	--	-------------------------------	--------------------------	-------



Procedure NA for arrival on PDZ VORTAC airway radials 012 CW 078.

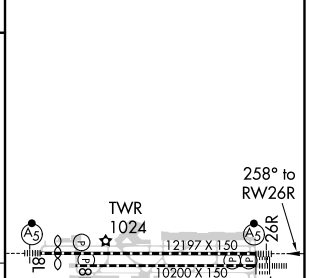
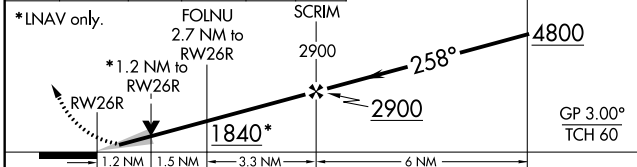
Procedure NA for arrivals at ACINS on V283-587 southbound.

SW-3, 10 OCT 2019 to 07 NOV 2019

SW-3, 10 OCT 2019 to 07 NOV 2019

ELEV 944	D TDZE 932
----------	-------------------

3700 EGYAZ	tr 173° LAKVE	tr 100° PDZ	VGSI and RNAV glidepath not coincident (VGSI Angle 3.00°/TCH 75).
------------	---------------	-------------	---



CATEGORY	A	B	C	D
LPV DA		1132/24	200 (200-½)	
LNAV/VNAV DA		1264/30	332 (400-⅝)	
LNAV MDA	1380/24	448 (500-½)	1380/45	448 (500-⅞)
C CIRCLING	1400-1	456 (500-1)	1500-1½ 556 (600-1½)	1540-2 596 (600-2)

TDZ/CL Rwys 8L and 26L
HIRL Rwys 8L-26R and 8R-26L