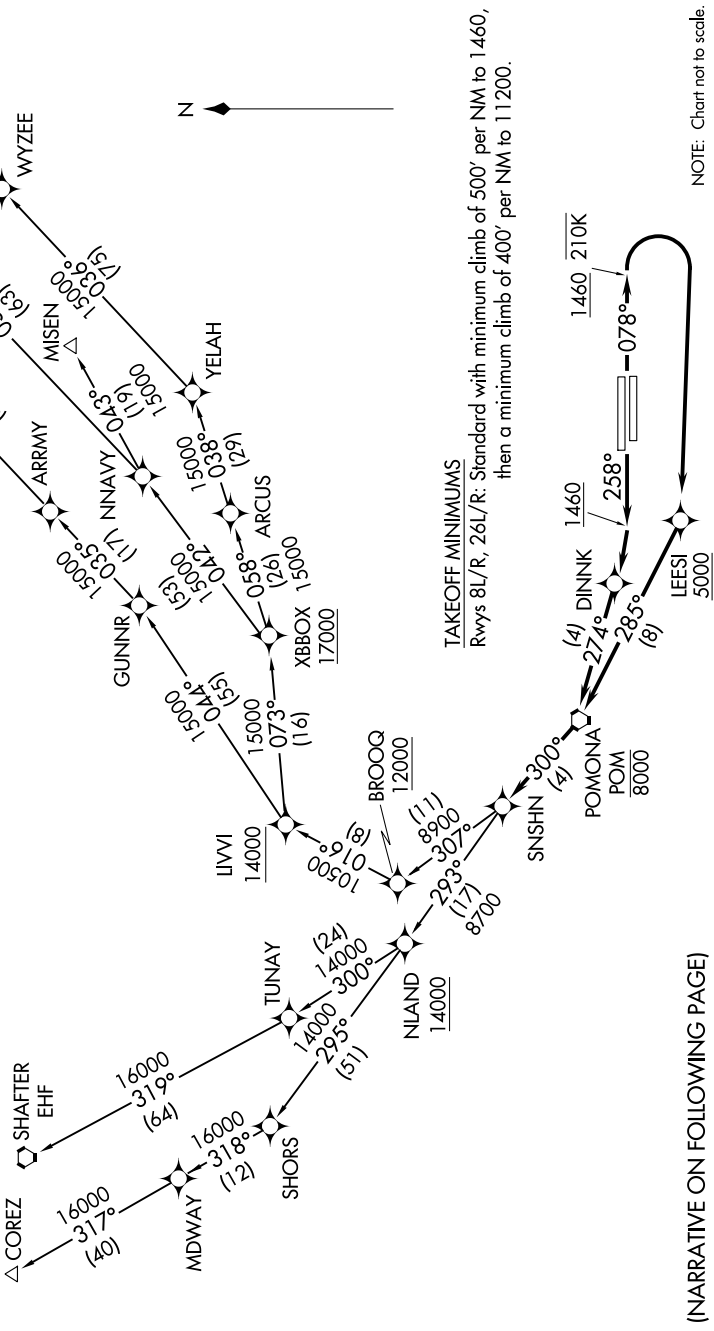


SW-3, 10 OCT 2019 to 07 NOV 2019

D-ATIS 124.25  
CLINC DEL 118.1  
CPDIC  
GND CON 121.9 237.8  
ONTARIO TOWER 120.6 360.775  
SOCAL DEP CON 125.5 349.0

NOTE: RNAV 1.  
NOTE: RADAR required.  
NOTE: DME/DME/IRU or GPS required.  
NOTE: Turbojet and turboprop aircraft only.  
NOTE: MISEN transition restricted to aircraft landing LAS complex.  
NOTE: HAILO/BEALE/YELAH transition only.  
NOTE: Maintain at or below 250K unless otherwise directed by ATC.

**TOP ALTITUDE:  
FL230**



(NARRATIVE ON FOLLOWING PAGE)

NOTE: Chart not to scale.

SW-3, 10 OCT 2019 to 07 NOV 2019