

WAAS CH 50505 W13A	APP CRS 136°	Rwy ldg 6500 TDZE 266 Apt Elev 272
--	------------------------	---

RNAV (GPS) RWY 13

HARDY-ANDERS FIELD NATCHEZ-ADAMS COUNTY (HE/Z)

▼ For uncompensated Baro-VNAV systems, LNAV/VNAV NA below -15°C (5°F) or above 54°C (130°F). DME/DME RNP-0.3 NA. Baro VNAV and VDP NA when using Vicksburg Tallulah Rgnl altimeter setting. When local altimeter setting not received, use Vicksburg Tallulah Rgnl altimeter setting: increase all DA 133 feet, all MDA 140 feet, increase LPV visibilities all Cats 1/8 mile, LNAV/VNAV all Cats and LNAV Cats C/D visibilities 3/8 mile and Circling Cats C/D 1/4 mile. For inop MALSRS, increase LNAV/VNAV all Cats visibility to 7/8 and LNAV Cats C and D visibility to 1 1/8. For inop MALSRS, when using Vicksburg Tallulah Rgnl altimeter setting, increase LPV all Cats visibility to 1 1/8 and LNAV/VNAV all Cats visibility to 1 1/4.

MALSRS

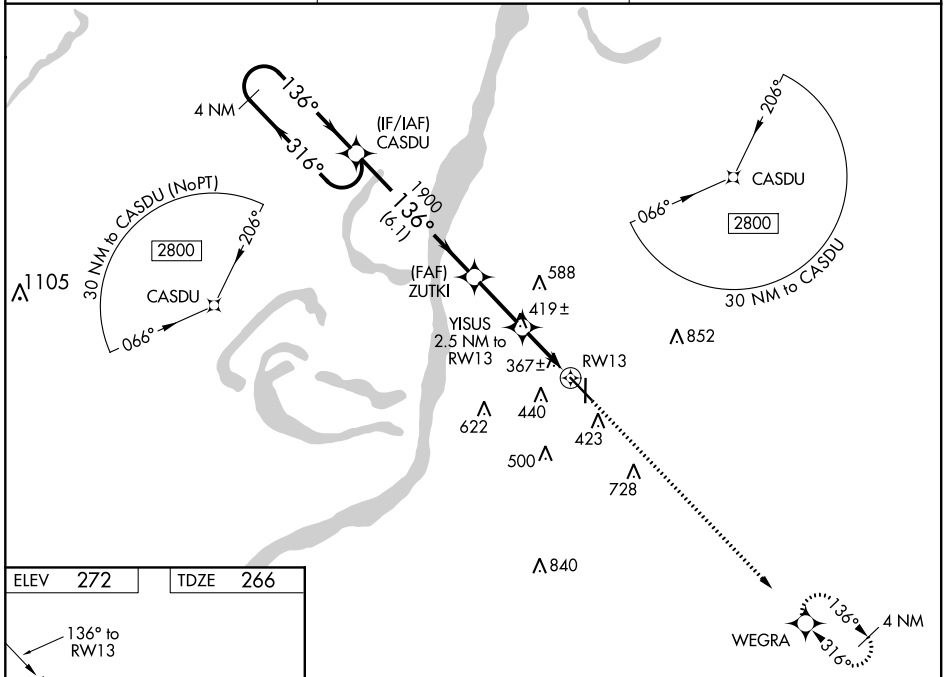


MISSED APPROACH:
Climb to 2800 direct
WEGRA and hold.

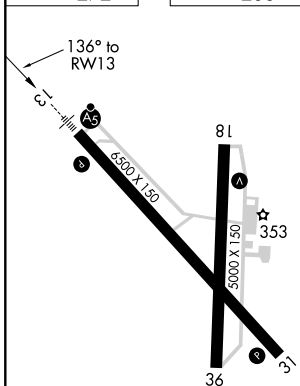
AWOS-3PT
124.675

HOUSTON CENTER
120.975 299.6

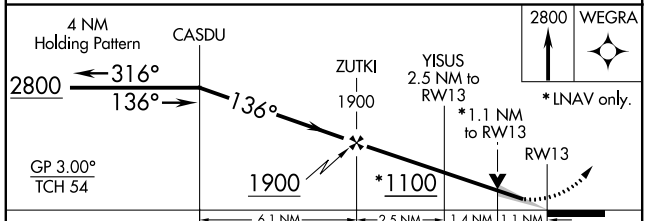
UNICOM
122.8 (CTAF)



ELEV 272	TDZE 266
----------	----------



HIRL Rwy 13-31
MIRL Rwy 18-36



CATEGORY	A	B	C	D
LPV DA		466-1/2	200 (200-1/2)	
LNAV/VNAV DA		534-1/2	268 (300-1/2)	
LNAV MDA	680-1/2	414 (500-1/2)	680-3/4	414 (500-3/4)
CIRCLING	740-1 468 (500-1)	800-1 528 (600-1)	800-1 1/2 528 (600-1 1/2)	840-2 568 (600-2)