

WAAS CH 45734 W18A	APP CRS 181°	Rwy ldg 5000 TDZE 272 Apt Elev 272
--	------------------------	---

RNAV (GPS) RWY 18

HARDY-ANDERS FIELD NATCHEZ-ADAMS COUNTY (HE/Z)

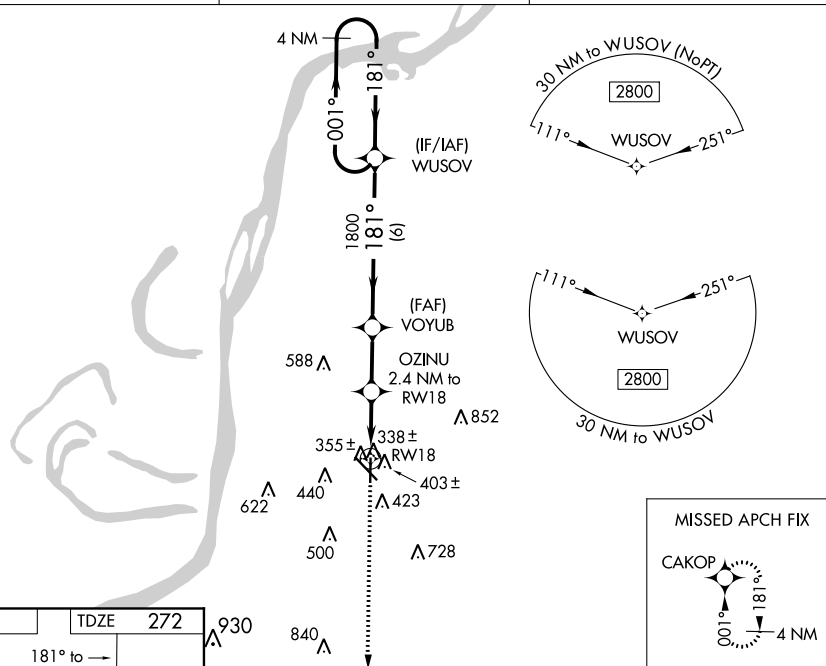
⚠ DME/DME RNP-0.3 NA. When local altimeter setting not received, use Vicksburg Tallulah Rgnl altimeter setting and increase all MDA 140 feet; increase LP and LNAV Cats C and D visibility 3/8 mile and Circling Cats C and D visibility 1/4 mile. Helicopter visibility reduction below 1 SM NA. Night Landing: Rwy 18 NA.

MISSED APPROACH: Climb to 2800 direct CAKOP and hold.

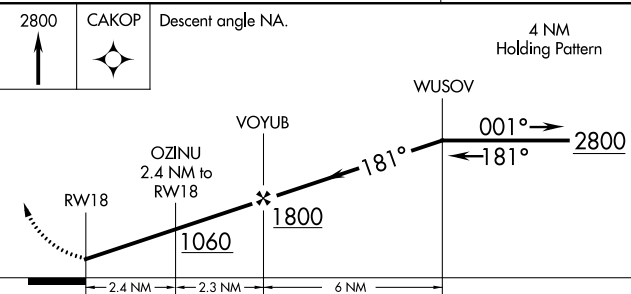
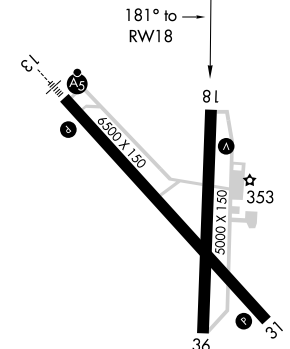
AWOS-3PT
124.675

HOUSTON CENTER
120.975 299.6

UNICOM
122.8 (CTAF) ①



ELEV 272	TDZE 272
-----------------	-----------------



CATEGORY	A	B	C	D
LP MDA	620-1 348 (400-1)			
LNAV MDA	660-1 388 (400-1)			
CIRCLING	740-1 468 (500-1)	800-1 528 (600-1)	800-1½ 528 (600-1½)	840-2 568 (600-2)

HIRL Rwy 13-31
MIRL Rwy 18-36 ①

SC-4, 10 OCT 2019 to 07 NOV 2019

SC-4, 10 OCT 2019 to 07 NOV 2019