

WAAS CH 90334 W31A	APP CRS 316°	Rwy ldg 6500 TDZE 272 Apt Elev 272
--	------------------------	---

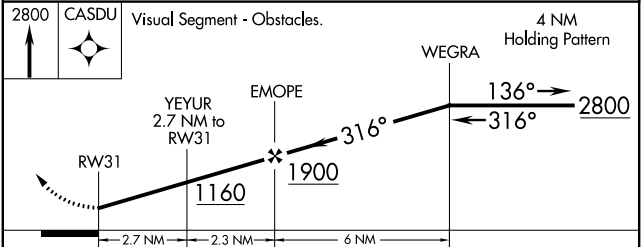
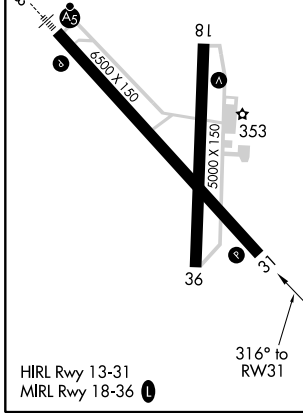
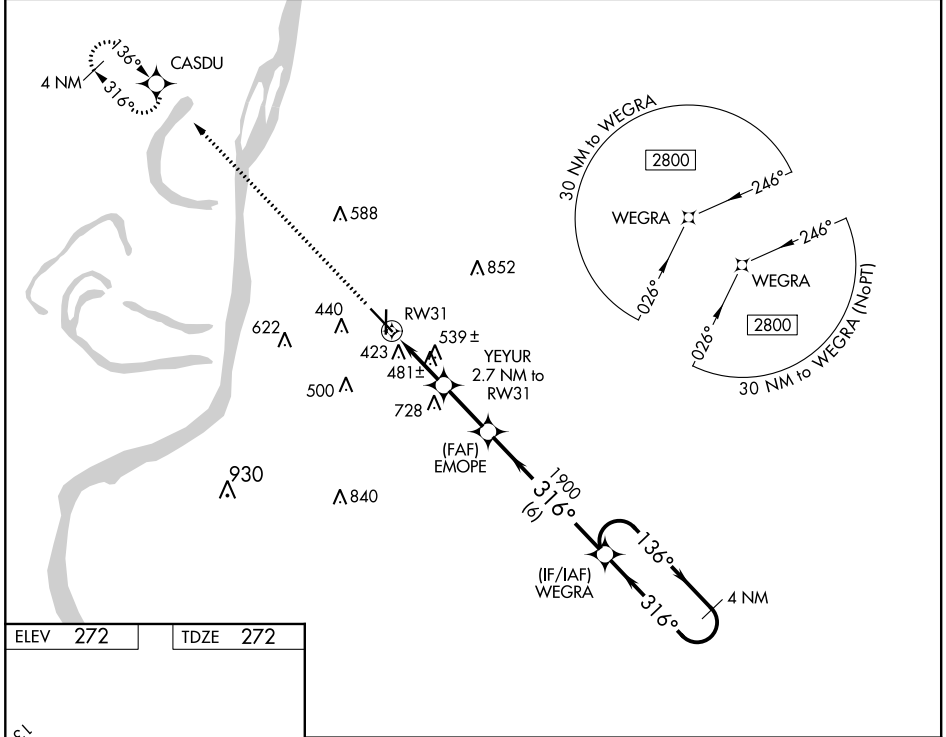
RNAV (GPS) RWY 31

HARDY-ANDERS FIELD NATCHEZ-ADAMS COUNTY (HE/Z)

⚠ DME/DME RNP-0.3 NA. Helicopter visibility reduction below 3/4 SM NA. When local altimeter setting not received, use Vicksburg Tallulah Rgnl altimeter setting and increase all MDAs 140 feet: increase LP Cats C and D visibility 1/2 mile, LNAV Cats C and D visibility 3/8 mile, Circling Cat C visibility 1/2 mile, and Circling Cat D visibility 1/4 mile.

MISSED APPROACH: Climb to 2800 direct CASDU and hold.

AWOS-3PT 124.675	HOUSTON CENTER 120.975 299.6	UNICOM 122.8 (CTAF) 0
----------------------------	--	---------------------------------



CATEGORY	A	B	C	D
LP MDA	740-1	468 (500-1)	740-1 3/8	468 (500-1 3/8)
LNAV MDA	800-1	528 (600-1)	800-1 1/2	528 (600-1 1/2)
CIRCLING	800-1	528 (600-1)	800-1 1/2 528 (600-1 1/2)	840-2 568 (600-2)

SC-4, 10 OCT 2019 to 07 NOV 2019

SC-4, 10 OCT 2019 to 07 NOV 2019