

WAAS CH 77734 W36A	APP CRS 001°	Rwy Idg TDZE Apt Elev	5000 272 272
--	------------------------	-----------------------------	---

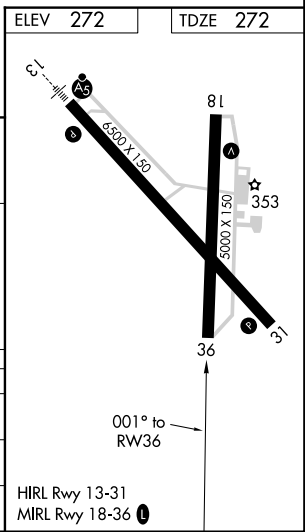
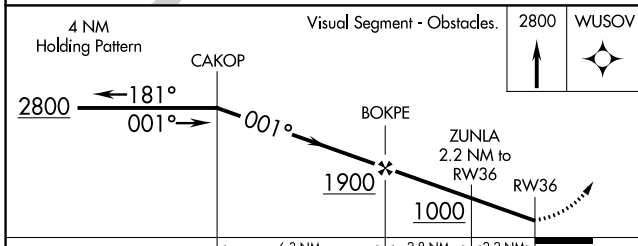
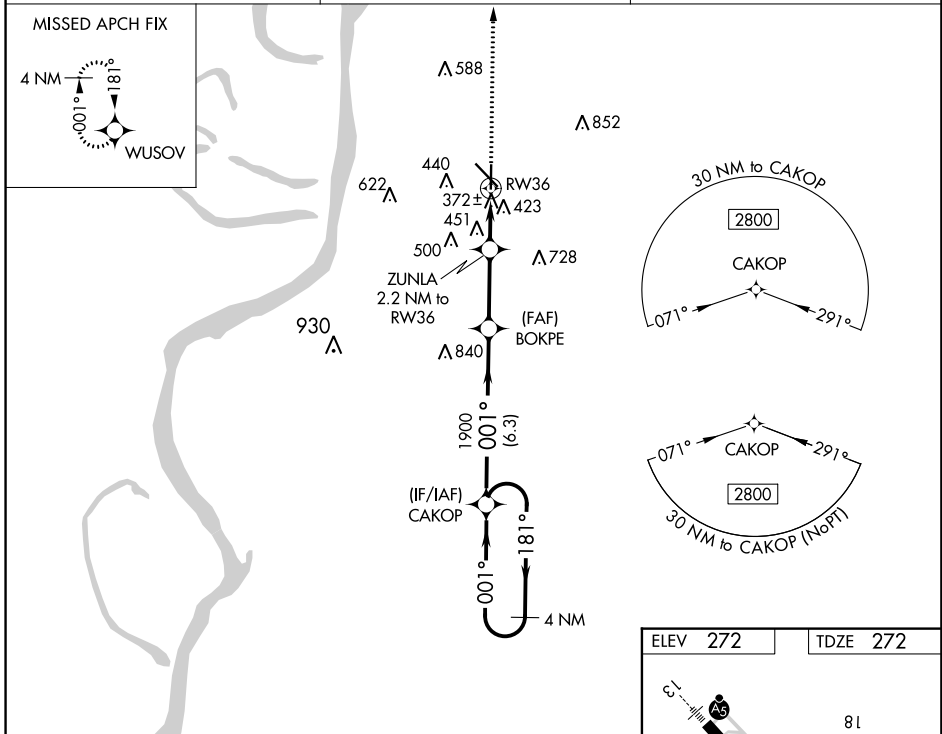
RNAV (GPS) RWY 36

HARDY-ANDERS FIELD NATCHEZ-ADAMS COUNTY (HE/Z)

▼ DME/DME RNP-0.3 NA. When local altimeter setting not received, use Vicksburg Tallulah Rgnl altimeter setting and increase all MDA 140 feet; increase LP and LNAV Cats C and D visibility $\frac{3}{8}$ mile and Circling Cats C and D visibility $\frac{1}{4}$ mile. Helicopter visibility reduction below 1 SM NA. Night Landing: Rwy 36 NA.

MISSED APPROACH: Climb to 2800 direct WUSOV and hold.

AWOS-3PT 124.675	HOUSTON CENTER 120.975 299.6	UNICOM 122.8 (CTAF) 0
----------------------------	--	---------------------------------



CATEGORY	A	B	C	D
LP MDA	660-1 388 (400-1)			
LNAV MDA	720-1	488 (500-1)	720-1 $\frac{3}{8}$	488 (500-1 $\frac{3}{8}$)
CIRCLING	740-1 468 (500-1)	800-1 528 (600-1)	800-1 $\frac{1}{2}$ 528 (600-1 $\frac{1}{2}$)	840-2 568 (600-2)

SC-4, 10 OCT 2019 to 07 NOV 2019

SC-4, 10 OCT 2019 to 07 NOV 2019