

| | | | |
|---|------------------------|-----------------------------|---|
| VOR/DME HEZ 110.0 Chan 37 | APP CRS 197° | Rwy Idg TDZE Apt Elev | 5000 272 272 |
|---|------------------------|-----------------------------|---|

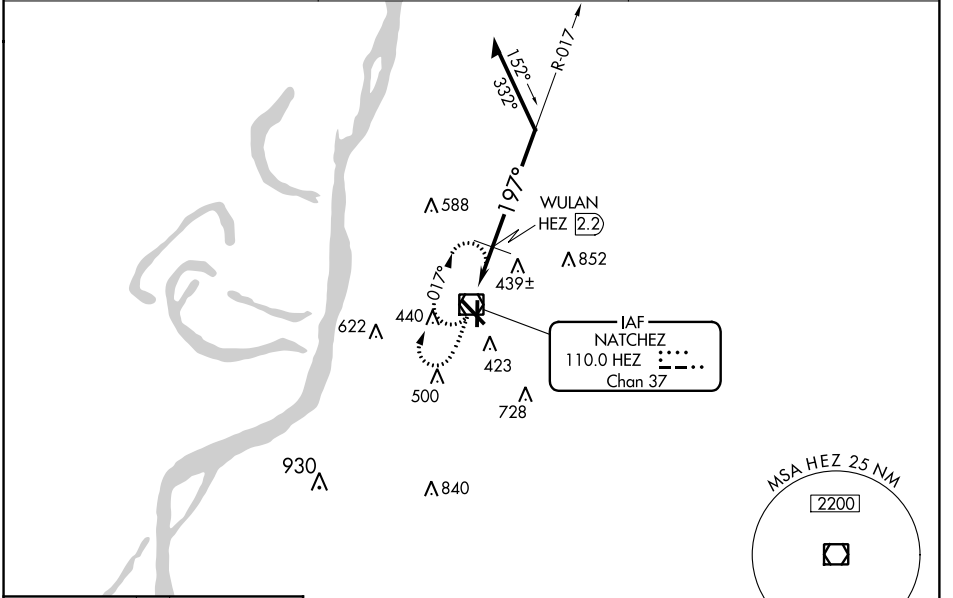
VOR RWY 18

HARDY-ANDERS FIELD NATCHEZ-ADAMS COUNTY (HEZ)

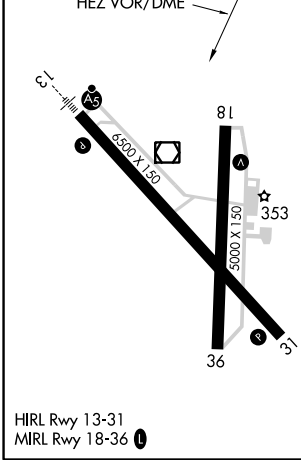
⚠ Helicopter visibility reduction below 1 SM NA. When local altimeter setting not received, use Vicksburg Tallulah Rgnl altimeter setting and increase all MDA 140 feet; increase S-18 Cats B/C/D visibility ¼ mile and Circling Cat B ¼ mile, Cat C ½ mile and Cat D ¾ mile. WULAN FIX MINIMUMS: when using Vicksburg Tallulah Rgnl altimeter setting, increase S-18 Cats C and D visibility ⅓ mile and Circling Cats C and D visibility ¼ mile. Night Landing: Rwy 18 NA.

MISSED APPROACH: Climb to 1000 then climbing right turn to 2000 in HEZ VOR/DME holding pattern, continue climb-in-hold to 2000.

| | | |
|----------------------------|--|---------------------------------|
| AWOS-3PT 124.675 | HOUSTON CENTER 120.975 299.6 | UNICOM 122.8 (CTAF) 0 |
|----------------------------|--|---------------------------------|



| | |
|----------|----------|
| ELEV 272 | TDZE 272 |
|----------|----------|



| | | | |
|------|------|-----|---------------------|
| 1000 | 2000 | HEZ | Remain within 10 NM |
| ↑ | ↻ | ☐ | |

Increase WULAN FIX altitude to 1020 when using Vicksburg Tallulah Rgnl altimeter setting.

HEZ VOR/DME holding pattern details:

- Altitudes: 880, 2000
- Bearings: 017°, 197°
- WULAN HEZ 2.2
- Distance: 2.2 NM

| CATEGORY | A | B | C | D |
|--------------------|----------------------|----------------------|------------------------|----------------------|
| S-18 | 880-1 | 608 (700-1) | 880-1¾ | 608 (700-1¾) |
| CIRCLING | 880-1 | 608 (700-1) | 880-1¾ 608 (700-1¾) | 880-2 608 (700-2) |
| WULAN FIX MINIMUMS | | | | |
| S-18 | 700-1 | 430 (500-1) | 700-1¼ | 430 (500-1¼) |
| CIRCLING | 740-1 468 (500-1) | 800-1 528 (600-1) | 800-1½ 528 (600-1½) | 840-2 568 (600-2) |

VOR RWY 18

SC-4, 10 OCT 2019 to 07 NOV 2019

SC-4, 10 OCT 2019 to 07 NOV 2019