

RNAV (GPS) RWY 21

BRYCE CANYON (BCE)

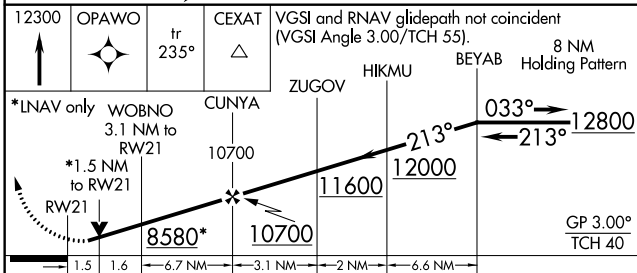
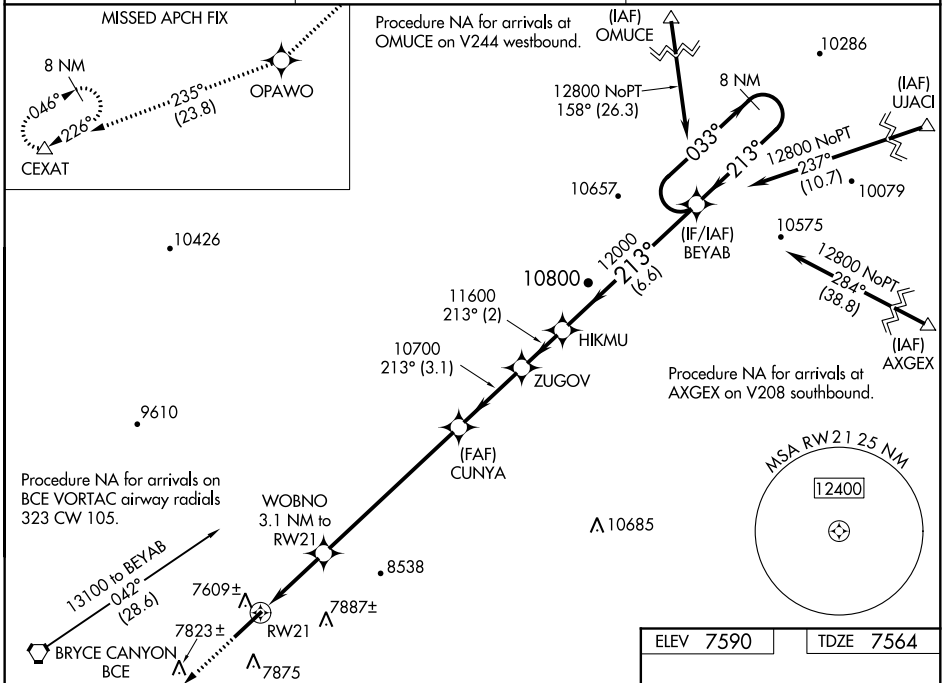
WAAS CH 99516 W21A	APP CRS 213°	Rwy Idg TDZE Apt Elev	7394 7564 7590
---------------------------------	------------------------	-----------------------------	---

▽ For uncompensated Baro-VNAV systems, LNAV/VNAV NA below -30°C (-22°F) or above 54°C (130°F). When local altimeter setting not received, procedure NA. DME/DME RNP-0.3 NA. Helicopter visibility reduction below ¾ SM NA.

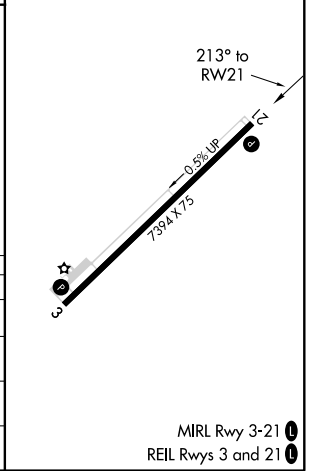
⊛ -30°C

MISSED APPROACH:
Climb to 12300 direct OPAWO and on track 235° to CEXAT and hold.

ASOS 135.475	SALT LAKE CITY CENTER 133.6 269.25	UNICOM 122.80 (CTAF) 0
------------------------	--	----------------------------------



CATEGORY	A	B	C	D
LPV DA	7889-1½		325 (300-1½)	NA
LNAV/VNAV DA	8016-1½		452 (500-1½)	NA
LNAV MDA	8040-1	476 (500-1)	8040-1¾ 476 (500-1¾)	NA
CIRCLING	8200-1 610 (700-1)	8220-1 630 (700-1)	8240-1¾ 650 (700-1¾)	NA



SW-4, 10 OCT 2019 to 07 NOV 2019

SW-4, 10 OCT 2019 to 07 NOV 2019