

LOC/DME I-RMZ 111.7 Chan 54	APP CRS 129°	Rwy Idg 5012 TDZE 54 Apt Elev 55
---	------------------------	---

ILS or LOC RWY 13

KNOX COUNTY RGNL (R.KD)

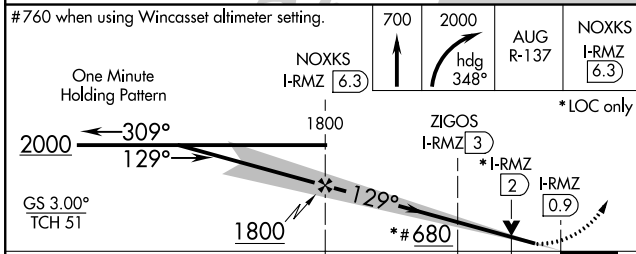
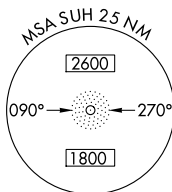
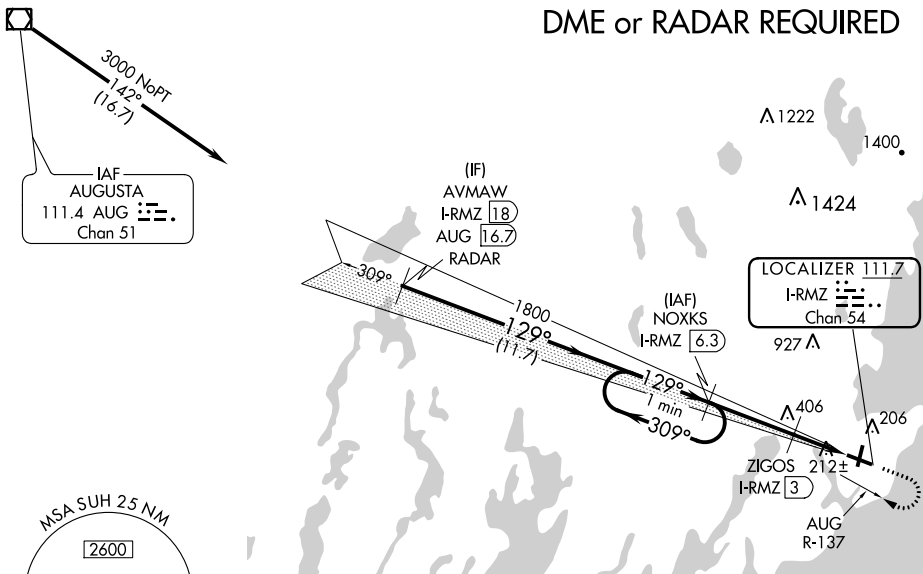
▼ DME required. VDP NA when using Wiscasset altimeter setting. When local altimeter setting not received, use Wiscasset altimeter setting and increase all DA to 319 feet and all MDA 80 feet, increase S-LOC 13 Cats C/D visibility 3/8 SM and Circling Cat C 1/2 SM. For inop ALS when using Wiscasset altimeter setting increase S-ILS 13 all Cats visibility to 3/8 SM and S-LOC 13 Cats C/D to 1 3/8 SM.



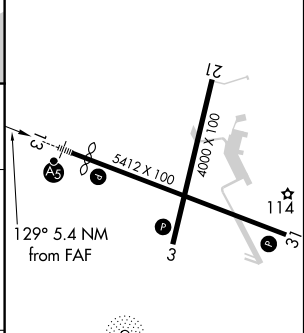
MISSED APPROACH: Climb to 700 then climbing right turn to 2000 on heading 348° and on AUG R-137 to NOXKS/I-RMZ 6.3 DME and hold.

AWOS-3PT 119.025	PORTLAND APP CON* 120.4 299.2	CLNC DEL 123.8	UNICOM 123.05 (CTAF)
----------------------------	---	--------------------------	--------------------------------

DME or RADAR REQUIRED



ELEV 55	D	TDZE 54
---------	----------	---------



CATEGORY	A	B	C	D
S-ILS 13	254-1/2 200 (200-1/2)			
S-LOC 13	440-1/2 386 (400-1/2)	440-5/8 386 (400-5/8)		
C CIRCLING	580-1 525 (600-1)	720-1 3/4 665 (700-1 3/4)	1140-3 1085 (1100-3)	

REIL Rwy 3 and 31
MIRL Rwy 3-21
HIRL Rwy 13-31

NE-1, 10 OCT 2019 to 07 NOV 2019

NE-1, 10 OCT 2019 to 07 NOV 2019