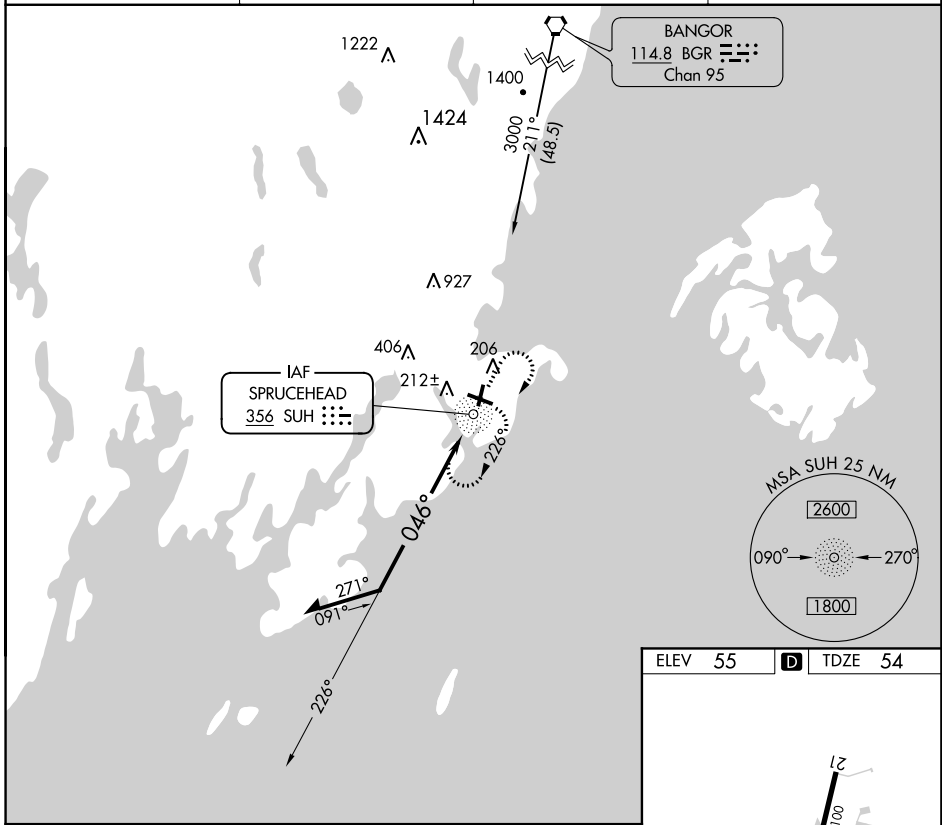


NDB SUH	APP CRS	Rwy Idg	4000
356	046°	TDZE	54
		Apt Elev	55

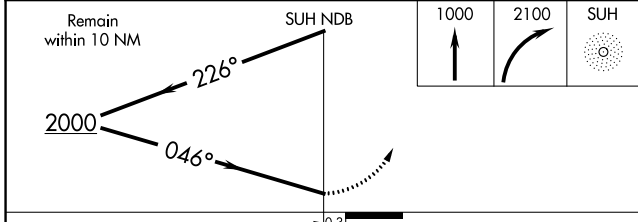
NDB RWY 3
KNOX COUNTY RGNL (R.KD)

<p>▽ ▲ NA</p>		<p>MISSED APPROACH: Climb to 1000, then right climbing turn to 2100 direct SUH NDB and hold.</p>	
AWOS-3PT	PORTLAND APP CON★	CLNC DEL	UNICOM
119.025	120.4 299.2	123.8	123.05 (CTAF) 📻



NE-1, 10 OCT 2019 to 07 NOV 2019

NE-1, 10 OCT 2019 to 07 NOV 2019



ELEV	55	D	TDZE	54
------	----	----------	------	----

REIL Rwy 3 and 31 **📻**
MIRL Rwy 3-21 **📻**
HIRL Rwy 13-31 **📻**

CATEGORY	A	B	C	D
S-3	580-1 526 (600-1)		580-1½ 526 (600-1½)	580-1¾ 526 (600-1¾)
C CIRCLING	580-1 525 (600-1)		720-1¾ 665 (700-1¾)	1140-3 1085 (1100-3)