

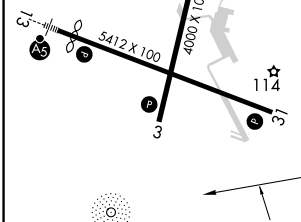
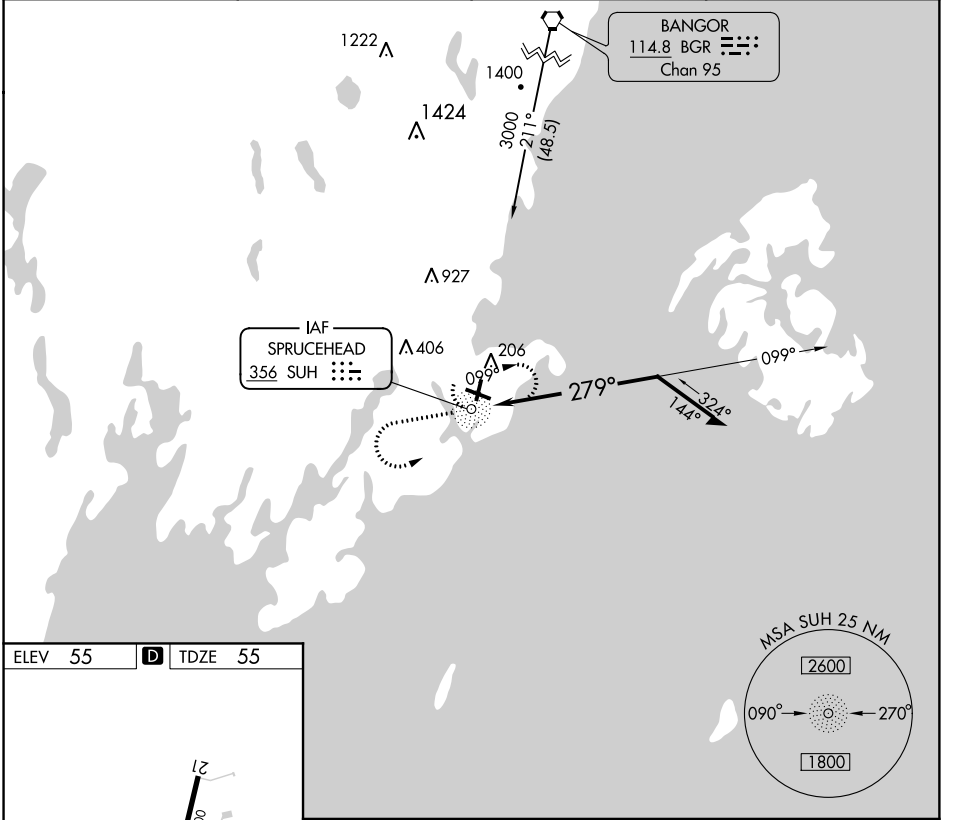
NDB SUH 356	APP CRS 279°	Rwy ldg 5412	TDZE 55
		Apt Elev 55	

NDB RWY 31

KNOX COUNTY RGNL (R.KD)

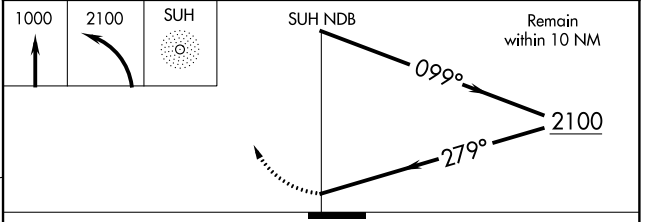
NA Rwy 31 helicopter visibility reduction below 3/4 SM NA. MISSED APPROACH: Climb to 1000 then left climbing turn to 2100 direct SUH NDB and hold.

AWOS-3PT 119.025	PORTLAND APP CON★ 120.4 299.2	CLNC DEL 123.8	UNICOM 123.05 (CTAF)
----------------------------	---	--------------------------	--------------------------------



ELEV 55	D	TDZE 55
---------	----------	---------

REIL Rwys 3 and 31
MIRL Rwy 3-21
HIRL Rwy 13-31



CATEGORY	A	B	C	D
S-31	620-1	565 (600-1)	620-1½ 565 (600-1½)	620-1¾ 565 (600-1¾)
C CIRCLING	620-1	565 (600-1)	720-1¾ 665 (700-1¾)	1140-3 1085 (1100-3)

NE-1, 10 OCT 2019 to 07 NOV 2019

NE-1, 10 OCT 2019 to 07 NOV 2019