

WAAS CH <b>48940</b>	APP CRS <b>129°</b>	Rwy Idg <b>5012</b>
<b>W13A</b>		TDZE <b>54</b>
		Apt Elev <b>55</b>

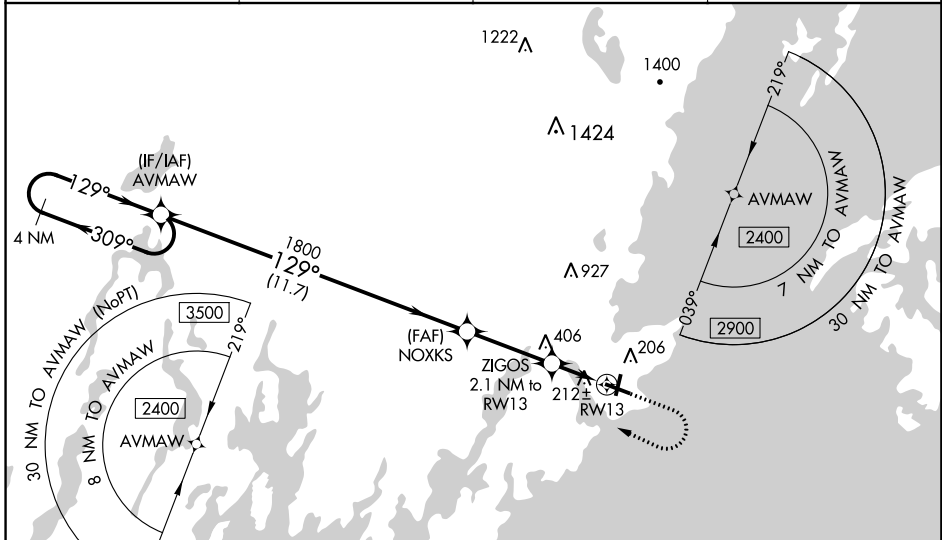
# RNAV (GPS) RWY 13

KNOX COUNTY RGNL (R.KD)

**▼** DME/DME RNP -0.3 NA. VDP and Baro-VNAV NA when using Wiscasset altimeter setting. When local altimeter setting not received, use Wiscasset altimeter setting and increase LPV DA to 319 feet, LNAV/VNAV DA to 467 feet and all MDA 80 feet. Increase LNAV/VNAV visibility all Cats to 1 SM, LNAV Cat C/D to 1 SM and Circling Cat C to 2 1/4 SM. For inop ALS increase LNAV/VNAV all Cats visibility to 1 1/8 SM. For inop ALS when using Wiscasset altimeter setting increase LPV all Cats visibility to 7/8 SM, LNAV/VNAV all Cats visibility to 1 3/8 SM and LNAV Cat C/D to 1 3/8 SM. For uncompensated Baro-VNAV systems, LNAV/VNAV NA below -15°C (5°F) or above 54°C (130°F).

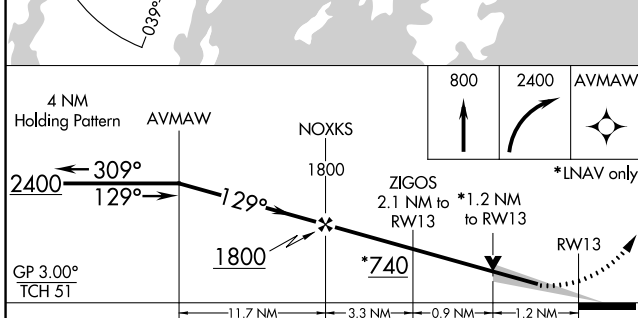
**MALSRL**  
 MISSED APPROACH: Climb to 800 then climbing right turn to 2400 direct AVMAW and hold.

AWOS-3PT <b>119.025</b>	PORTLAND APP CON★ <b>120.4 299.2</b>	CLNC DEL <b>123.8</b>	UNICOM <b>123.05 (CTAF)</b>
----------------------------	---	--------------------------	--------------------------------

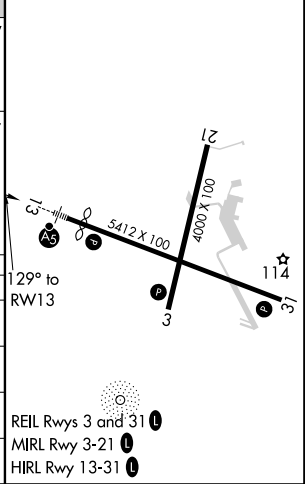


NE-1, 10 OCT 2019 to 07 NOV 2019

NE-1, 10 OCT 2019 to 07 NOV 2019



ELEV 55	<b>D</b>	TDZE 54
---------	----------	---------



CATEGORY	A	B	C	D
LPV DA		254-1/2	200 (200-1/2)	
LNAV/VNAV DA		402-3/4	348 (400-3/4)	
LNAV MDA	480-1/2	426 (500-1/2)	480-3/4	426 (500-3/4)
<b>C</b> CIRCLING	580-1	525 (600-1)	720-1 3/4 665 (700-1 3/4)	1140-3 1085 (1100-3)