

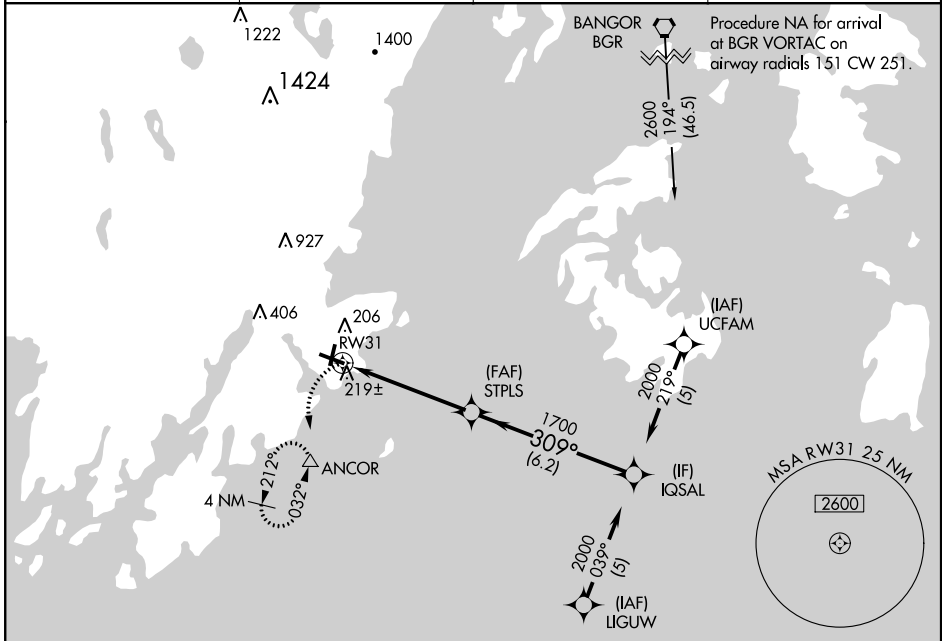
APP CRS	Rwy Idg	5412
309°	TDZE	55
	Apt Elev	55

RNAV (GPS) RWY 31

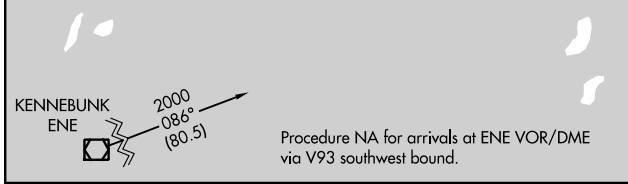
KNOX COUNTY RGNL (R.KD)

RNP APCH.	MISSED APPROACH: Climbing left turn to 2000 direct ANCOR and hold, continue climb-in-hold to 2000.
<p>▼ When local altimeter setting not received, use Wiscasset altimeter setting and increase all MDA 80 feet, LNAV Cat C and D and Circling Cat C visibility ¼ mile.</p> <p>▲ Rwy 31 helicopter visibility reduction below 1 SM NA.</p>	

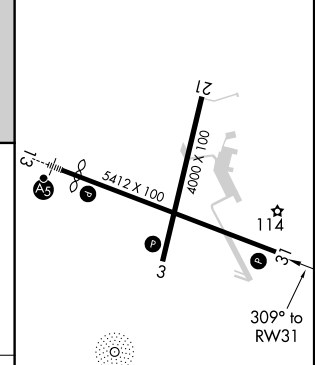
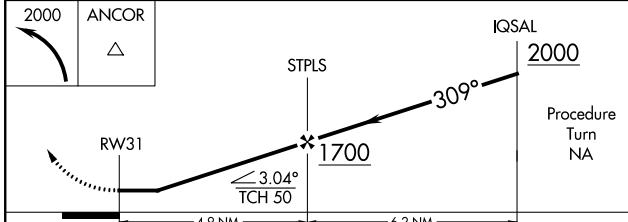
AWOS-3PT 119.025	PORTLAND APP CON★ 120.4 299.2	CLNC DEL 123.8	UNICOM 123.05 (CTAF) 0
----------------------------	---	--------------------------	---



NE-1, 10 OCT 2019 to 07 NOV 2019



ELEV	55	D	TDZE	55
------	-----------	---	------	-----------



CATEGORY	A	B	C	D
LNAV MDA	480-1	425 (500-1)	480-1¼	425 (500-1¼)
CIRCLING	600-1	545 (600-1)	720-1¾ 665 (700-1¾)	1140-3 1085 (1100-3)

- REIL Rwy 3 and 31 **0**
- MIRL Rwy 3-21 **0**
- HIRL Rwy 13-31 **0**