

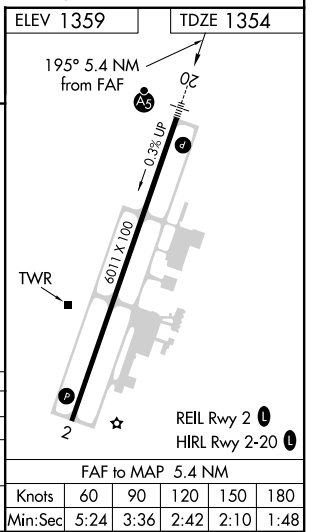
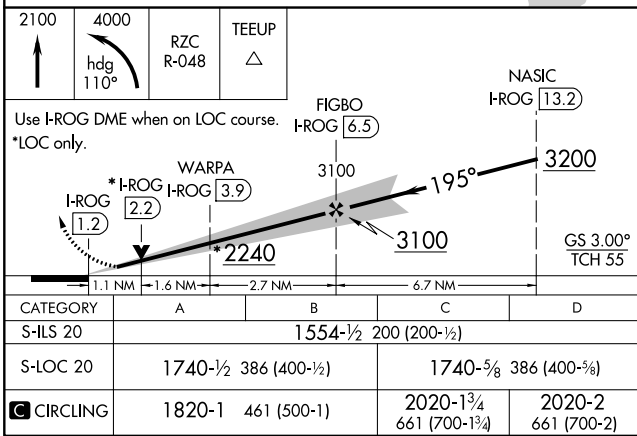
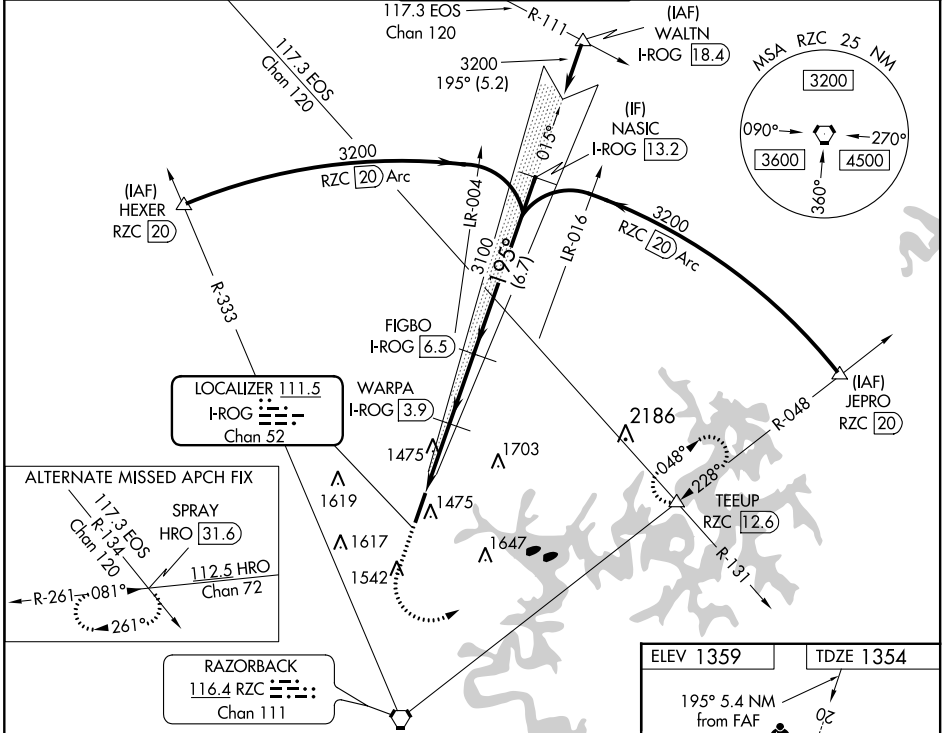
LOC/DME I-ROG <b>111.5</b> Chan 52	APP CRS <b>195°</b>	Rwy Idg <b>6011</b> TDZE <b>1354</b> Apt Elev <b>1359</b>
--	------------------------	---

# ILS or LOC RWY 20

## ROGERS EXECUTIVE-CARTER FIELD (ROG)

<b>▼</b> DME Required. <b>▲</b> Autopilot coupled approach NA below 1632.	MALSR 	MISSED APPROACH: Climb to 2100, then climbing left turn to 4000 on heading 110° and RZC VORTAC R-048 to TEEUP INT/RZC 12.6 DME and hold.
--	-----------	--

AWOS-3PT <b>134.375</b>	RAZORBACK APP CON* <b>126.6 305.2</b>	ROGERS TOWER* <b>119.375 (CTAF)</b>	GND CON <b>118.0</b>	CLNC DEL <b>121.75</b>
----------------------------	--	--	-------------------------	---------------------------



SC-1, 10 OCT 2019 to 07 NOV 2019

SC-1, 10 OCT 2019 to 07 NOV 2019