

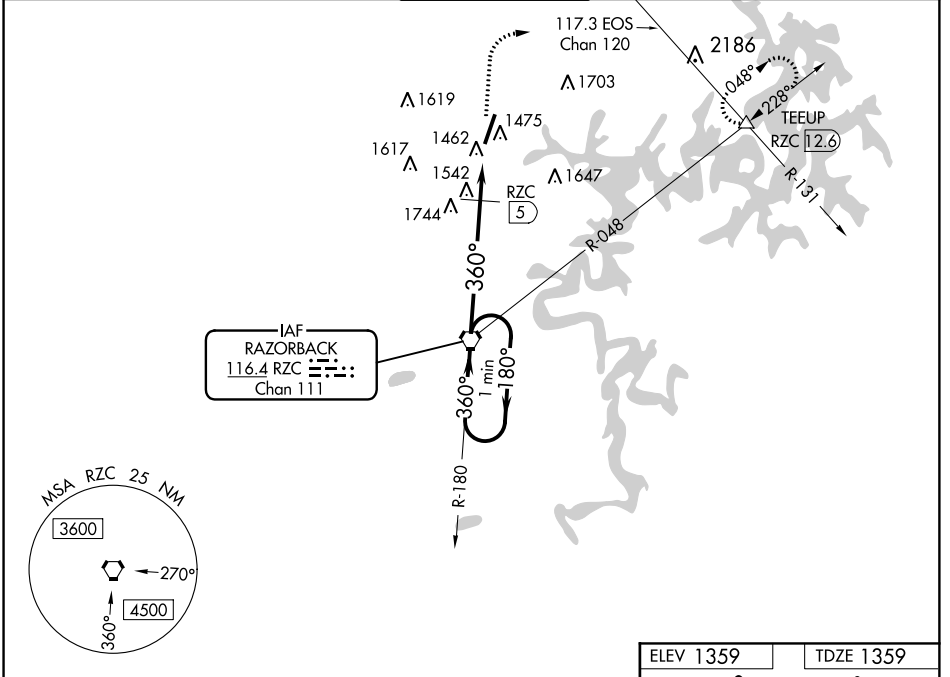
VORTAC RZC 116.4 Chan 111	APP CRS 360°	Rwy Idg TDZE Apt Elev	6011 1359 1359
--	------------------------	-----------------------------	---

VOR RWY 2

ROGERS EXECUTIVE-CARTER FIELD (ROG)

▼ Rwy 2 helicopter visibility reduction below 3/4 SM NA.
▲ MISSED APPROACH: Climb to 2100, then climbing right turn to 4000 via heading 050° and EOS R-131 to TEEUP INT and hold.

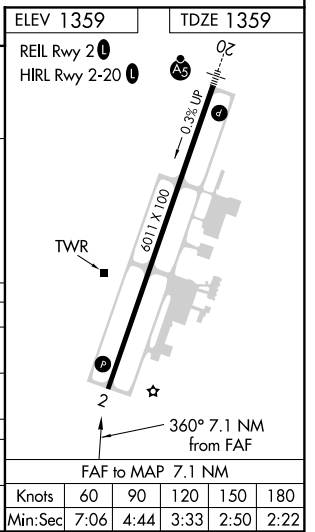
AWOS-3PT 134.375	RAZORBACK APP CON* 126.6 305.2	ROGERS TOWER* 119.375 (CTAF) 1	GND CON 118.0	CLNC DEL 121.75
----------------------------	--	--	-------------------------	---------------------------



VGSI and descent angles not coincident (VGSI Angle 3.00/TCH 55).
 One Minute Holding Pattern
 RZC VORTAC

2100	4000	EOS R-131	TEEUP
↑	hdg 050°		▲

CATEGORY	A	B	C	D
S-2	2100-1 741 (800-1)	2100-1½ 741 (800-1½)	2100-2¼ 741 (800-2¼)	2100-2½ 741 (800-2½)
C CIRCLING	2100-1 741 (800-1)	2100-1½ 741 (800-1½)	2100-2¼ 741 (800-2¼)	2100-2½ 741 (800-2½)
DME MINIMUMS				
S-2	1800-1	441 (500-1)	1800-1½ 441 (500-1½)	1800-1½ 441 (500-1½)
C CIRCLING	1820-1	461 (500-1)	2020-1¾ 661 (700-1¾)	2020-2 661 (700-2)



SC-1, 10 OCT 2019 to 07 NOV 2019

SC-1, 10 OCT 2019 to 07 NOV 2019