

LOC I-FKL 110.5	APP CRS 207°	Rwy ldg TDZE 5200 1540	Apt Elev 1540
---------------------------	------------------------	--	-------------------------

ILS or LOC RWY 21

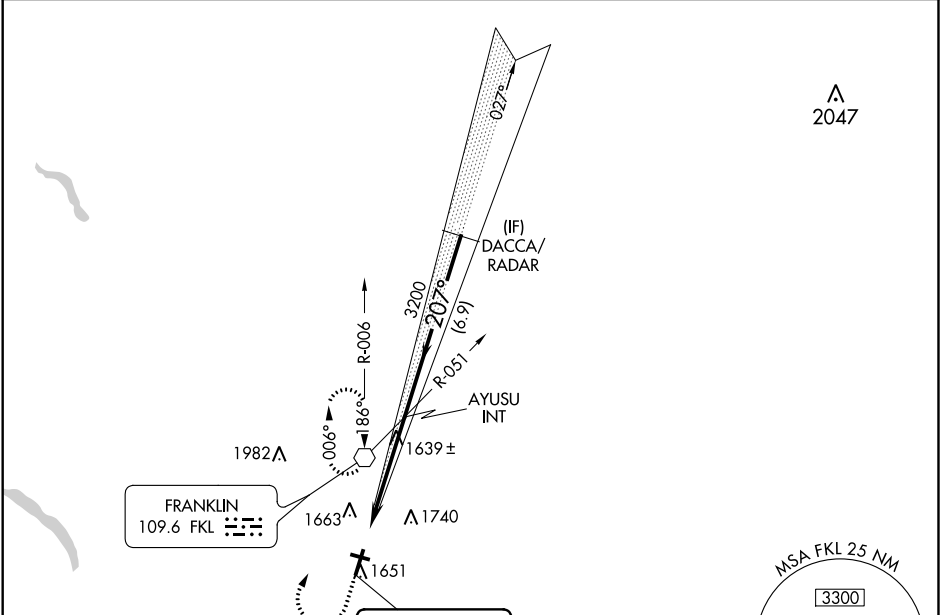
VENANGO RGNL (F'KL)

RADAR required to define DACCA.
RADAR required for procedure entry.

MALS **A5** MISSED APPROACH: Climb to 2200 then climbing right turn to 3400 direct FKL VOR and hold, continue climb-in-hold to 3400.

T For inop ALS, increase S-LOC 21 Cat C/D visibility to 1 SM.
Circling Rwy 12 NA at night.

AWOS-3PT 118.175	YOUNGSTOWN APP CON ★ 126.25 322.3	CLNC DEL 126.25	UNICOM 122.7 (CTAF) U
----------------------------	---	---------------------------	--



NE-4, 10 OCT 2019 to 07 NOV 2019

NE-4, 10 OCT 2019 to 07 NOV 2019

ELEV 1540	D	TDZE 1540			
FAF to MAP 5 NM					
Knots	60	90	120	150	180
Min:Sec	5:00	3:20	2:30	2:00	1:40

2200	3400	FKL		
CATEGORY	A	B	C	D
S-ILS-21	1740-1/2 200 (200-1/2)			
S-LOC-21	1900-1/2 360 (400-1/2)		1900-5/8 360 (400-5/8)	
CIRCLING	1960-1 420 (500-1)	2000-1 460 (500-1)	2000-1 1/2 460 (500-1 1/2)	2100-2 560 (600-2)