

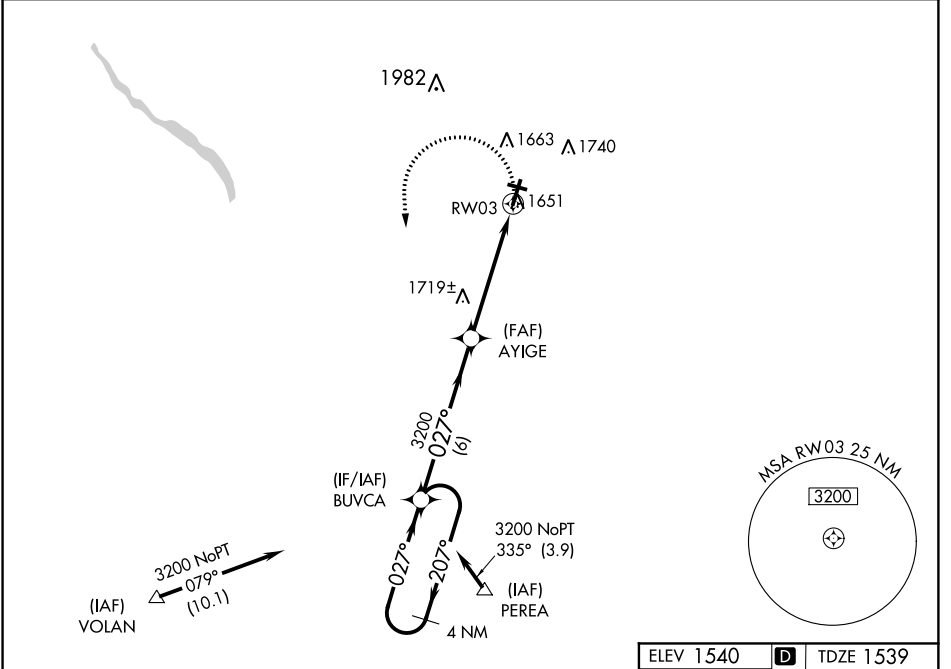
RNAV (GPS) RWY 3

VENANGO RGNL (F'KL)

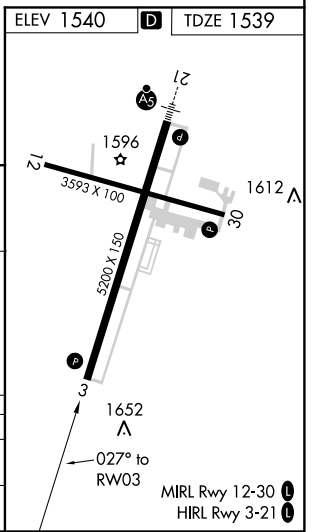
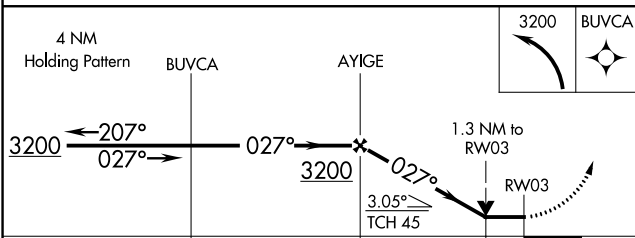
APP CRS 027°	Rwy Idg 5200
	TDZE 1539
	Apt Elev 1540

RNP APCH.	MISSED APPROACH: Climbing left turn to 3200 direct BUVCA and hold.
<p>▼ Rwy 3 helicopter visibility reduction below 3/4 SM NA. Circling Rwy 12 NA at night.</p>	

AWOS-3PT 118.175	YOUNGSTOWN APP CON ★ 126.25 322.3	CLNC DEL 126.25	UNICOM 122.7 (CTAF) 0
----------------------------	---------------------------------------------	---------------------------	---------------------------------



Procedure NA for arrivals at VOLAN on V10 northwest bound.



CATEGORY	A	B	C	D
LNVA MDA	1980-1 441 (500-1)			1980-1 1/4 441 (500-1 1/4)
CIRCLING	1980-1 440 (500-1)	2000-1 460 (500-1)	2000-1 1/2 460 (500-1 1/2)	2100-2 560 (600-2)

NE-4, 10 OCT 2019 to 07 NOV 2019

NE-4, 10 OCT 2019 to 07 NOV 2019