

VOR FKL 109.6	APP CRS 187°	Rwy ldg 5200
		TDZE 1540
		Apt Elev 1540

VOR RWY 21

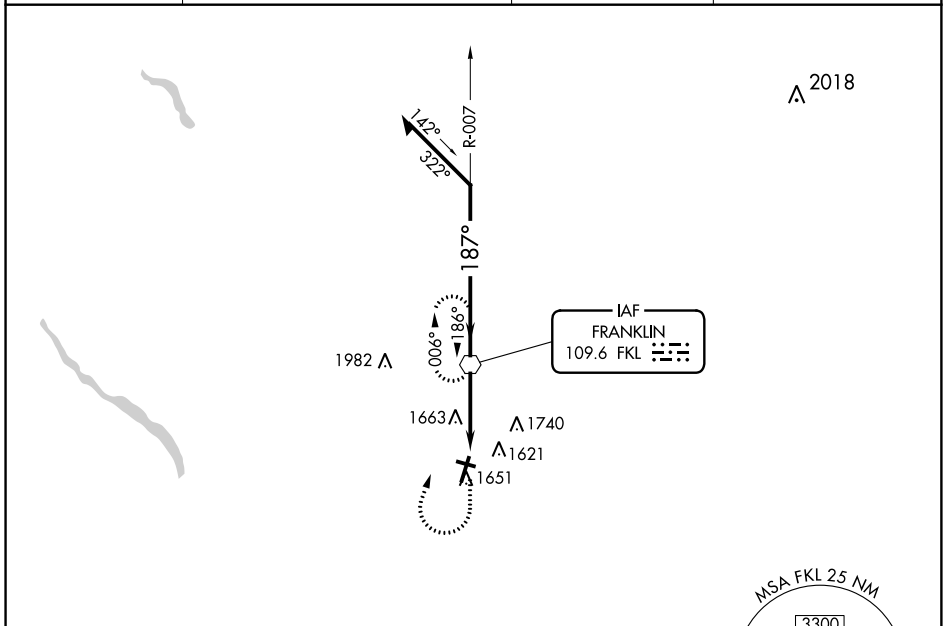
VENANGO RGNL (F'KL)

⚠ Inop table does not apply. When local altimeter setting not received, use Port Meadville altimeter setting and increase all MDA 80 feet and S-21 Cats C/D visibility 3/8 mile. Circling Rwy 12 NA at night. Rwy 12 helicopter visibility reduction below 1 SM NA.

MALSR
AS

MISSED APPROACH: Climb to 2200, then climbing right turn to 3300 direct FKL VOR and hold.

AWOS-3PT 118.175	YOUNGSTOWN APP CON ★ 126.25 322.3	CLNC DEL 126.25	UNICOM 122.7 (CTAF) 📻
----------------------------	---	---------------------------	--



NE-4, 10 OCT 2019 to 07 NOV 2019

NE-4, 10 OCT 2019 to 07 NOV 2019

ELEV 1540	D	TDZE 1540
-----------	----------	-----------

187° 3.3 NM from FAF

1596

3593 x 100

5200 x 150

1612

30

1652

MIRL Rwy 12-30 **L**

HIRL Rwy 3-21 **L**

FAF to MAP 3.3 NM

Knots	60	90	120	150	180
Min:Sec	3:18	2:12	1:39	1:19	1:06

2200	3300	FKL	Remain within 10 NM	
		FKL VOR		
CATEGORY	A	B	C	D
S-21	1920-1 380 (400-1)			
CIRCLING	1960-1 420 (500-1)	2000-1 460 (500-1)	2000-1½ 460 (500-1½)	2100-2 560 (600-2)