

GRAND FORKS, NORTH DAKOTA

# ILS or LOC RWY 17

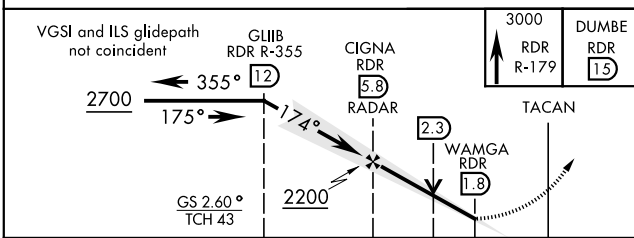
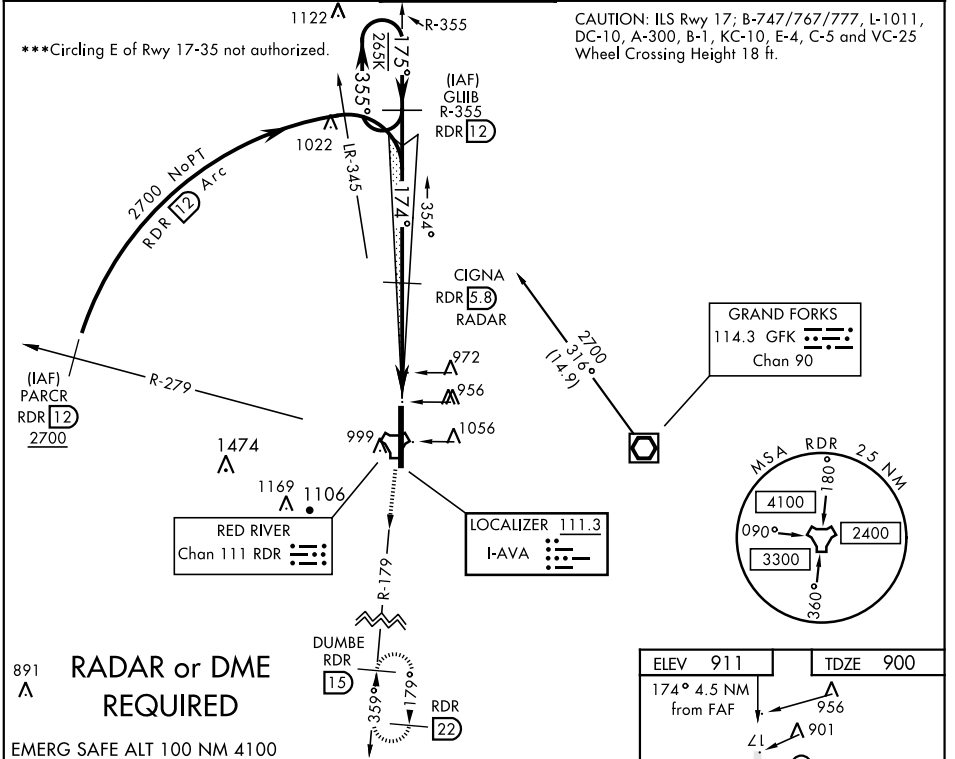
LOC I-AVA <b>111.3</b>	APCH CRS <b>174°</b>	Rwy Idg <b>12,351</b> TDZE <b>900</b> Arprt Elev <b>911</b>	AL-5010 [USAF]	GRAND FORKS AFB (KRDR)
---------------------------	-------------------------	---	----------------	------------------------

\* When ALS inop, increase RVR to 40 and vis to 3/4 mile.  
 \*\* When ALS inop, increase CAT AB RVR to 55 and vis to 1 mile;  
 CAT CDE RVR to 50, vis to 1 mile.

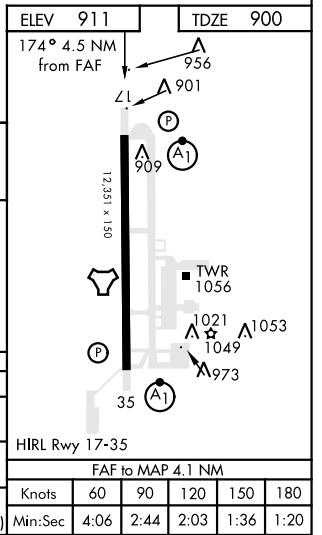
ALSF-1

MISSED APPROACH: Climb to 3000 on RDR TACAN R-179 to DUMBE and hold.

ATIS <b>273.45</b>	GRAND FORKS APP CON <b>118.1 318.1</b>	RED RIVER TOWER <b>124.9 349.0</b>	GND CON <b>119.15 275.8</b>	CLNC DEL <b>119.15 360.7</b>
-----------------------	---	---------------------------------------	--------------------------------	---------------------------------



CATEGORY	A	B	C	D	E
S-ILS 17*	1100/24		200	(200-1/2)	
S-LOC 17**	1240/24	340 (400-1/2)	1240/26	340	(400-1/2)
CIRCLING***	1340-1 429 (500-1)	1380-1 469 (500-1)	1380-1 1/2 469 (500-1 1/2)	1480-2 569 (600-2)	2040-3 1129 (1200-3)



GRAND FORKS, NORTH DAKOTA 47°57'N-97°24'W GRAND FORKS AFB (KRDR)  
 Amdt 3 08NOV18

# ILS or LOC RWY 17

NC-1, 10 OCT 2019 to 07 NOV 2019

NC-1, 10 OCT 2019 to 07 NOV 2019