

GRAND FORKS, NORTH DAKOTA

ILS or LOC RWY 35

GRAND FORKS AFB (KRDR)

LOC I-RDR 109.9	APCH CRS 354°	Rwy Idg 12,351	TDZE 911	Arpt Elev 911
---------------------------	-------------------------	-------------------	--------------------	-------------------------

AL-5010 [USAF]

* When ALS inop, increase RVR to 40 and vis to 3/8 mile.
 ** When ALS inop, increase CAT AB RVR to 55 and vis to 1 mile, CAT CDE vis to 1 1/8 miles.



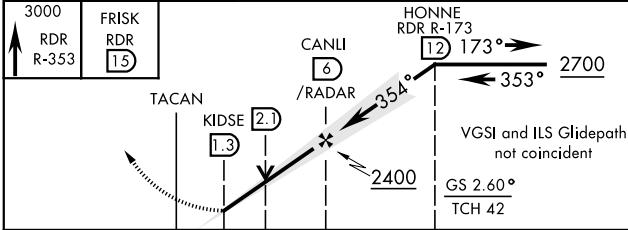
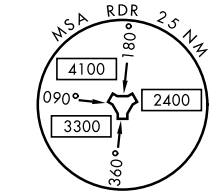
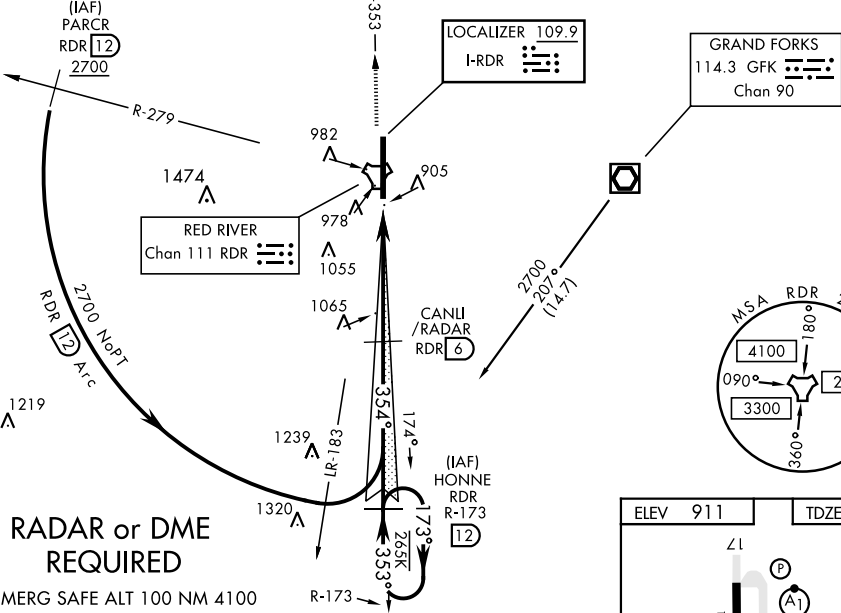
MISSED APPROACH: Climb to 3000 on RDR TACAN R-353 to FRISK and hold.

ATIS 273.45	GRAND FORKS APP CON 118.1 318.1	RED RIVER TOWER 124.9 349.0	GND CON 119.15 275.8	CLNC DEL 119.15 360.7
-----------------------	---	---------------------------------------	--------------------------------	---------------------------------

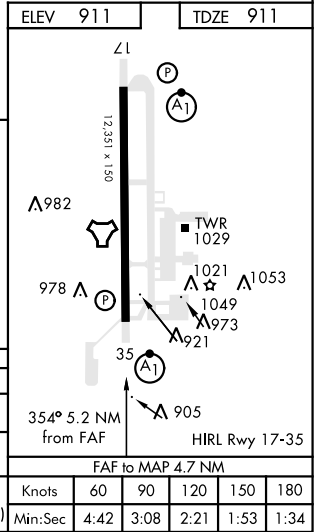
*** Circling E of Rwy 17-35 not authorized.



CAUTION: ILS RWY 35; B-747/767/777, L-1011, DC-10, A-300, B-1, KC-10, E-4, C-5 and VC-25 Wheel Crossing Height 17 ft.



CATEGORY	A	B	C	D	E
S-ILS 35 *	1111/24		200	(200-1/2)	
S-LOC 35 **	1340/24	429 (500-1/2)	1340/40	429 (500-3/4)	
CIRCLING ***	1340-1 429 (500-1)	1380-1 469 (500-1)	1380-1 1/2 469 (500-1 1/2)	1480-2 569 (600-2)	2040-3 1129 (1200-3)



GRAND FORKS, NORTH DAKOTA
 Amdt 3 08NOV18

47°57'N-97°24'W

GRAND FORKS AFB (KRDR)

ILS or LOC RWY 35

NC-1, 10 OCT 2019 to 07 NOV 2019

NC-1, 10 OCT 2019 to 07 NOV 2019