

GRAND FORKS, NORTH DAKOTA

RNAV (GPS) RWY 17

APCH CRS 174°	Rwy Idg 12,351
	TDZE 900
	Arpt Elev 911

AL-5010 (USAF)

GRAND FORKS AFB (KRDR)

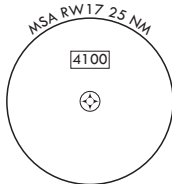
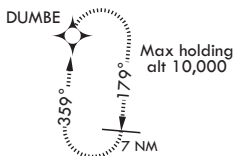
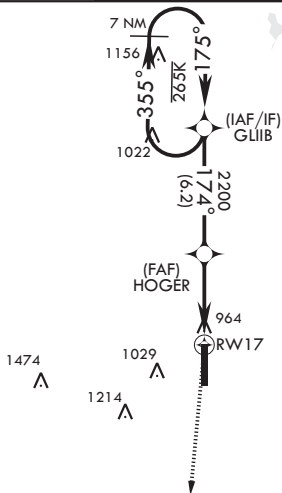
* When ALS inop, increase CAT AB RVR to 55 and vis to 1 mile, CAT CDE vis to 1 1/4 miles.
 ** Circling E of Rwy 17-35 not authorized.



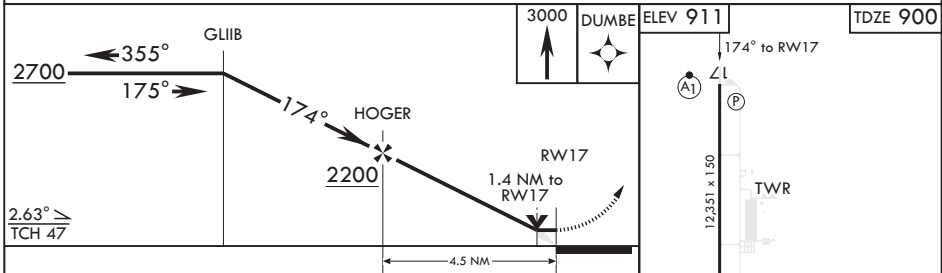
MISSED APPROACH: Climb to 3000 direct DUMBE and hold.

ATIS 273.45	APP CON 118.1 318.1	RED RIVER TOWER 124.9 349.0	GND CON 119.15 275.8	CLNC DEL 119.15 360.7
----------------	------------------------	--------------------------------	-------------------------	--------------------------

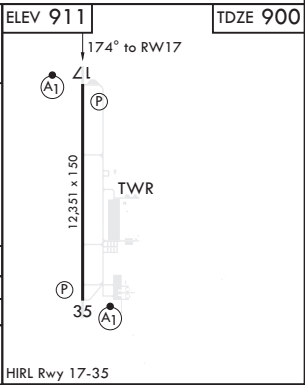
DME/DME RNP - 0.3 NA



1598
EMERG SAFE ALT 100 NM 4300



CATEGORY	A	B	C	D	E
LNAV MDA*	1320/24 420 (500-1/2)		1320/40 420 (500-3/4)		
CIRCLING**	1340-1 429 (500-1)	1380-1 469 (500-1)	1380-1 1/2 469 (500-1 1/2)	1480-2 569 (600-2)	2040-3 1129 (1200-3)



GRAND FORKS, NORTH DAKOTA

47°58'N - 97°24'W

GRAND FORKS AFB (KRDR)

Orig 20JUL17

RNAV (GPS) RWY 17

NC-1, 10 OCT 2019 to 07 NOV 2019

NC-1, 10 OCT 2019 to 07 NOV 2019