

WAAS CH 40330 W28A	APP CRS 285°	Rwy Idg 5018 TDZE 50 Apt Elev 52
-------------------------------------	---------------------	---

RNAV (GPS) RWY 28L

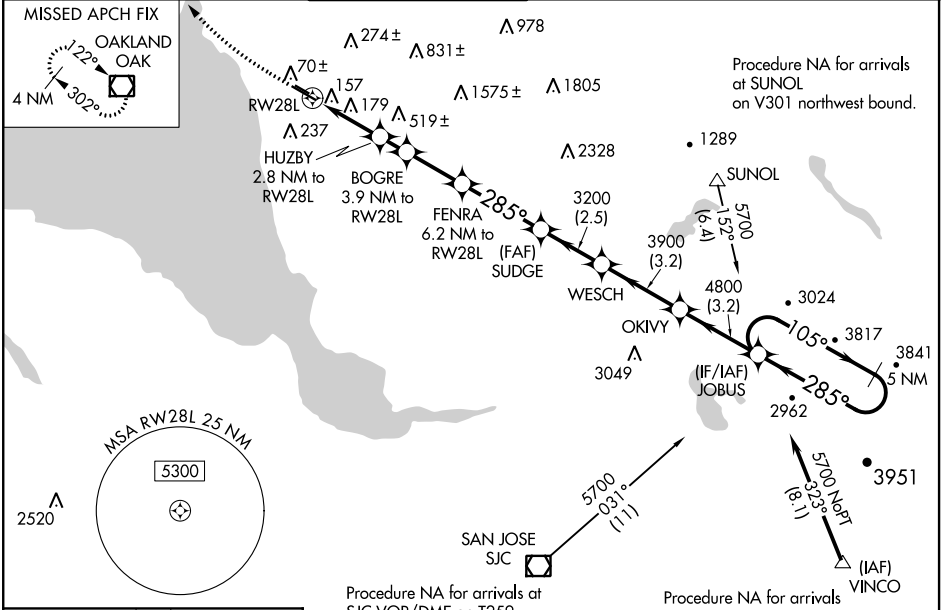
HAYWARD EXECUTIVE (HWD)

RNP APCH.

⚠ Baro-VNAV NA. When local altimeter setting not received, use Oakland altimeter setting and increase all DA and MDA 20 feet, and increase all LNAV/VNAV and LNAV Cats C and D visibility 1/8 mile. Circling NA north of Rwy 10L-28R. Rwy 28L: Helicopter visibility reduction below 3/4 SM NA.

⚠ MISSED APPROACH: Climb to 600 then climbing right turn to 2100 direct OAK VOR/DME and hold.

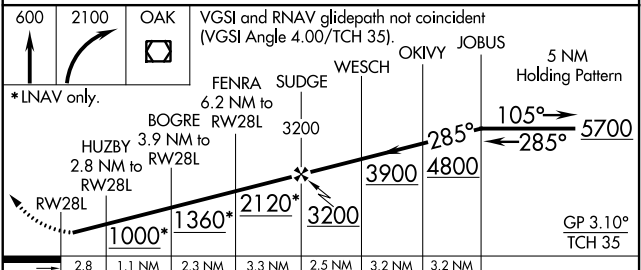
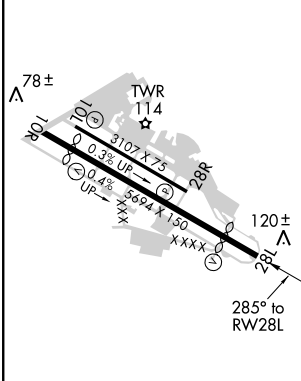
ATIS 126.7	NORCAL APP CON 124.4 351.8	HAYWARD TOWER ★ 120.2 (CTAF) 0 257.8	GND CON 121.4	CLNC DEL 128.05	UNICOM 122.95
----------------------	--------------------------------------	---	-------------------------	---------------------------	-------------------------



SW-2, 10 OCT 2019 to 07 NOV 2019

SW-2, 10 OCT 2019 to 07 NOV 2019

ELEV 52	TDZE 50
---------	---------



	A		B		C		D
LPV DA	348-1		298 (300-1)				
LNAV/VNAV DA	400-1 1/8		350 (400-1 1/8)				
LNAV MDA	460-1	410 (500-1)	460-1 1/8	410 (500-1 1/8)			
CIRCLING	540-1	488 (500-1)	540-1 1/2	488 (500-1 1/2)		620-2	568 (600-2)