

VOR/DME OAK 116.8 Chan 115	APP CRS 293°	Rwy Idg TDZE Apt Elev	N/A N/A 52
---	------------------------	-----------------------------	---------------------------------------

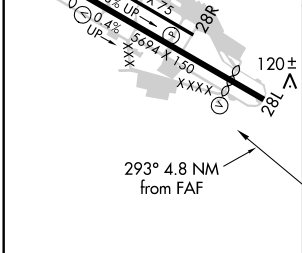
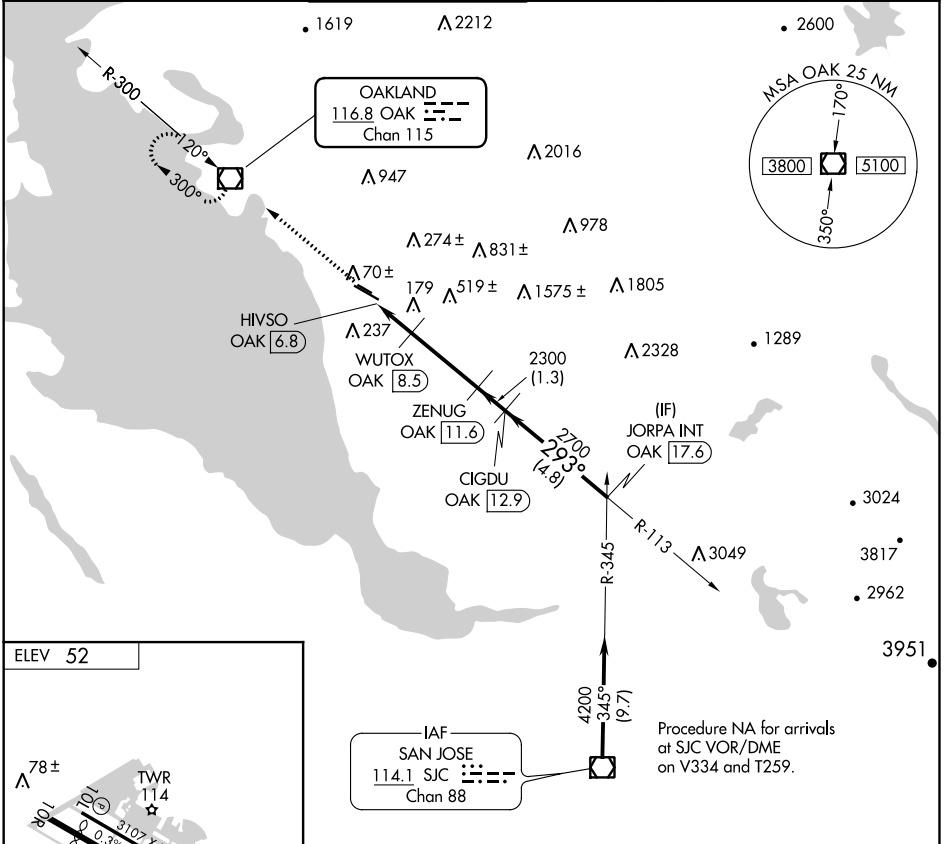
VOR/DME-A

HAYWARD EXECUTIVE (HWD)

⚠ When local altimeter setting not received, use Oakland altimeter setting and increase all MDA 20 feet. Circling NA north of Rwy 10L-28R.

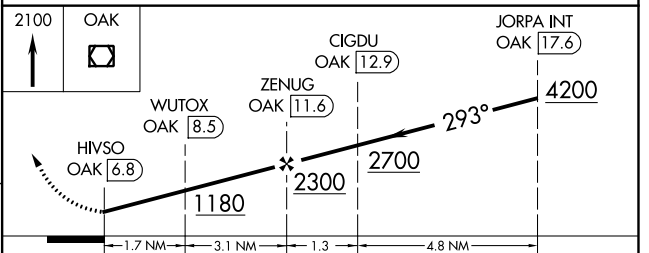
⚠ MISSED APPROACH: Climb to 2100 direct OAK VOR/DME and hold.

ATIS 126.7	NORCAL APP CON 124.4 351.8	HAYWARD TOWER * 120.2 (CTAF) 257.8	GND CON 121.4	CLNC DEL 128.05	UNICOM 122.95
----------------------	--------------------------------------	--	-------------------------	---------------------------	-------------------------



ELEV 52

MIRL Rwy 10R-28L
MIRL Rwy 10L-28R
REIL Rwy 10R and 28L



CATEGORY	A	B	C	D
CIRCLING	560-1	508 (600-1)	560-1½ 508 (600-1½)	620-2 568 (600-2)

SW-2, 10 OCT 2019 to 07 NOV 2019

SW-2, 10 OCT 2019 to 07 NOV 2019