


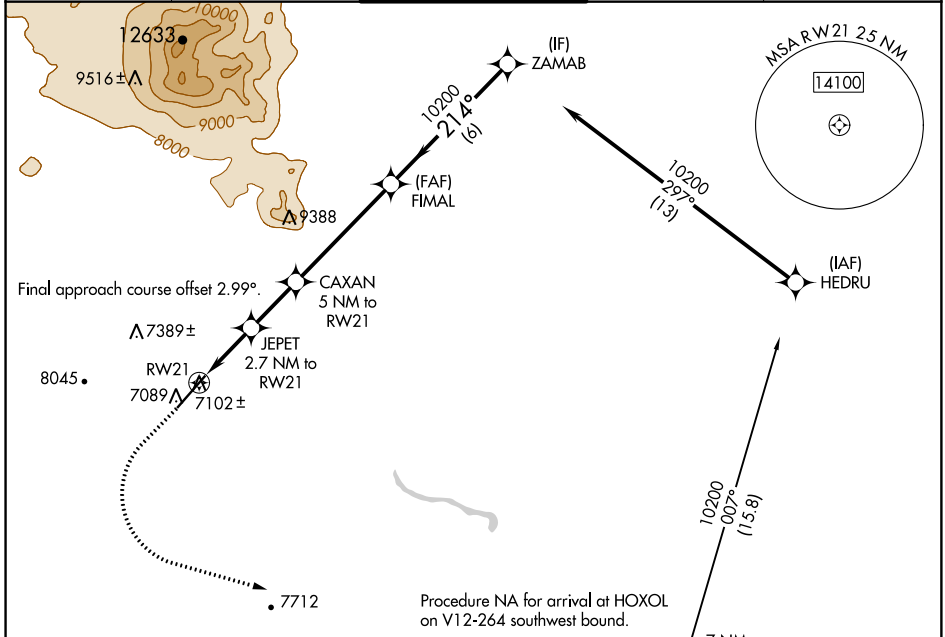
WAAS CH 99341 W21A	APP CRS 214°	Rwy Idg TDZE 7000 Apt Elev 7014
--	------------------------	---

RNAV (GPS) RWY 21

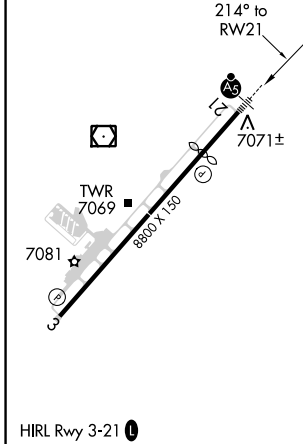
FLAGSTAFF PULLIAM (F'L.G)

<p>▼ For uncompensated Baro-VNAV systems, LNAV/VNAV NA below -19 °C (2°F) or above 44°C (111°F). DME/DME RNP-0.3 NA. ▲ For inop ALS, increase LPV all Cats visibility to 3/8 SM.</p>	<p>MALSR </p>	<p>MISSED APPROACH: Climb to 7500 then climbing left turn to 10800 direct HOXOL and hold.</p>
---	---	---

ATIS 125.8	PHOENIX APP CON 126.375 236.775	FLAGSTAFF TOWER ★ 134.55 (CTAF) 239.25	GND CON 121.9	UNICOM 122.95
----------------------	---	--	-------------------------	-------------------------



ELEV 7014	D	TDZE 7003
-----------	----------	-----------



7500	10800	HOXOL	FIMAL	ZAMAB	
↑	↶	△	10200	10200	
*LNAV only		*1 NM to RWY 21	8640*	GP 3.00° TCH 52	
RWY 21		CAXAN 5 NM to RWY 21	214°		
1 NM		1.7 NM	2.3 NM	4.9 NM	
CATEGORY		A	B	C	D
LPV DA	7258-1/2		255 (300-1/2)		
LNAV/VNAV DA	7319-5/8		316 (400-3/4)		
LNAV MDA	7360-1/2 357 (400-1/2)		7360-5/8 357 (400-3/4)		
C CIRCLING	7520-1 506 (600-1)	7560-1 546 (600-1)	8100-3 1086 (1100-3)	8560-3 1546 (1600-3)	

SW-4, 10 OCT 2019 to 07 NOV 2019

SW-4, 10 OCT 2019 to 07 NOV 2019