

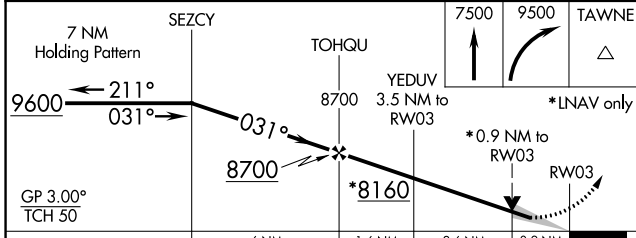
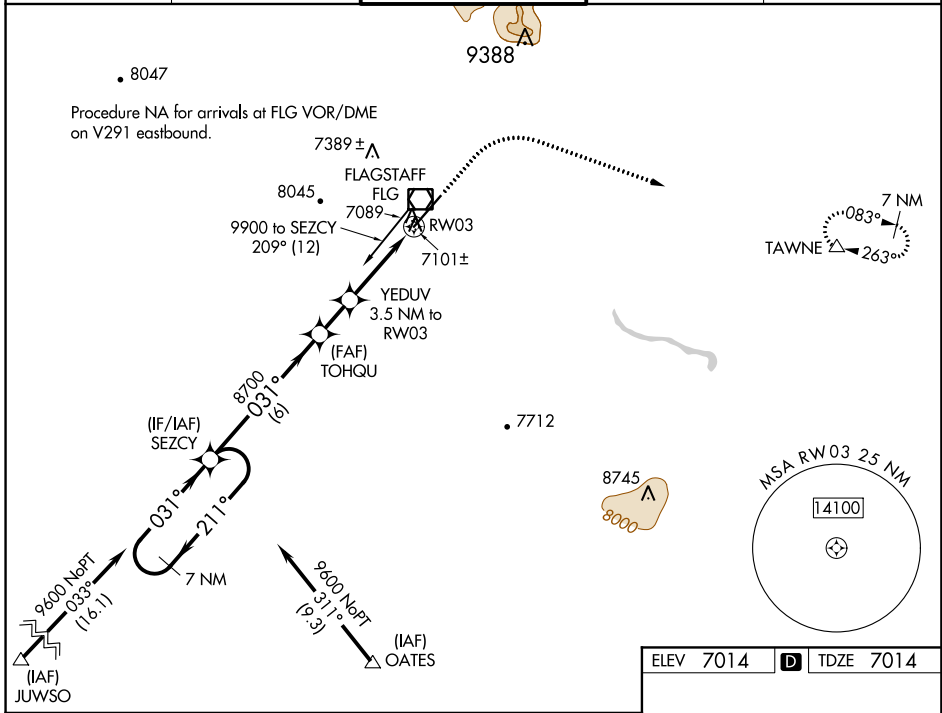
WAAS CH 45718 W03A	APP CRS 031°	Rwy Idg TDZE Apt Elev	8800 7014 7014
--	------------------------	-----------------------------	---

RNAV (GPS) RWY 3

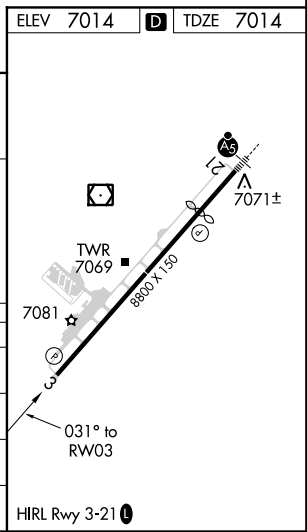
FLAGSTAFF PULLIAM (FLG)

<p>▼ For uncompensated Baro-VNAV systems, LNAV/VNAV NA below -19°C (-2°F) or above 44°C (112°F). ▲ DME/DME RNP-0.3 NA.</p>	<p>MISSED APPROACH: Climb to 7500 then climbing right turn to 9500 direct TAWNE and hold.</p>
--	---

ATIS 125.8	PHOENIX APP CON 126.375 236.775	FLAGSTAFF TOWER ★ 134.55 (CTAF) 0 239.25	GND CON 121.9	UNICOM 122.95
----------------------	---	---	-------------------------	-------------------------



CATEGORY	A	B	C	D
LPV DA		7264-¾	250 (300-¾)	
LNAV/VNAV DA		7282-7/8	268 (300-7/8)	
LNAV MDA		7360-1	346 (400-1)	
CIRCLING	7520-1 506 (600-1)	7560-1 546 (600-1)	8100-3 1086 (1100-3)	8560-3 1546 (1600-3)



SW-4, 10 OCT 2019 to 07 NOV 2019

SW-4, 10 OCT 2019 to 07 NOV 2019