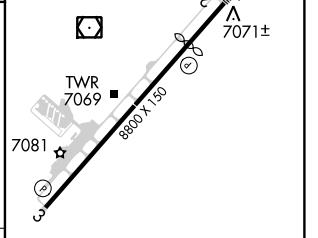
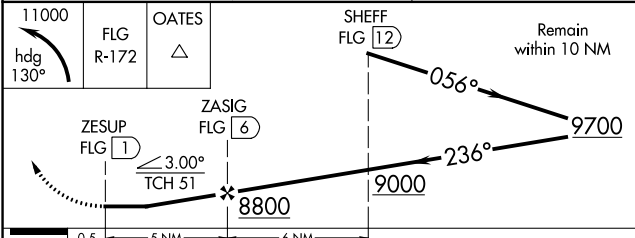
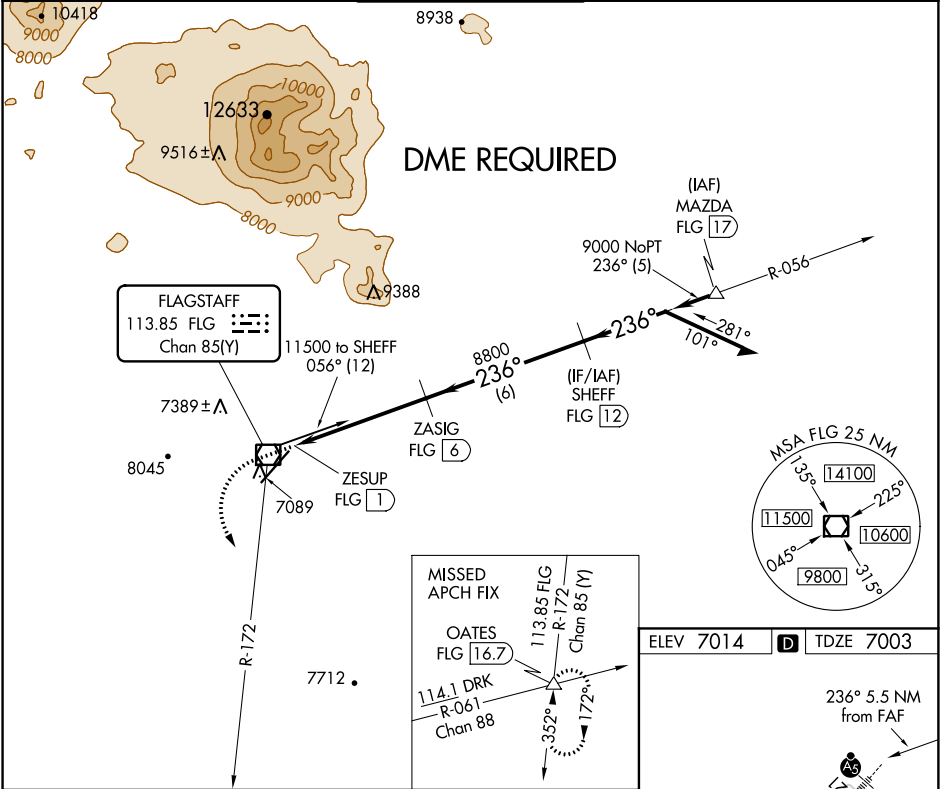


VOR/DME FLG 113.85 Chan 85(Y)	APP CRS 236°	Rwy Idg 7000 TDZE 7003 Apt Elev 7014
--	------------------------	---

VOR RWY 21

FLAGSTAFF PULLIAM (FLG)

Rwy 21 helicopter visibility reduction below 1 SM NA. DME required. Inop table does not apply to S-21 Cats A/B. Night landing: Rwy 21, operational VGSI required, remain on or above VGSI glidepath until threshold.	MISSED APPROACH: Climbing left turn to 11000 on heading 130° and FLG R-172 to OATES INT/16.7 DME, continue climb-in-hold.			
		ATIS 125.8	PHOENIX APP CON 126.375 236.775	FLAGSTAFF TOWER ★ 134.55 (CTAF) 239.25



CATEGORY S-21	A	B	C	D
	7520-1	7520-1	517 (600-1)	
CIRCLING	7520-1 506 (600-1)	7560-1 546 (600-1)	8100-3 1086 (1100-3)	8560-3 1546 (1600-3)

ELEV 7014	TDZE 7003
HIRL Rwy 3-21	

SW-4, 10 OCT 2019 to 07 NOV 2019

SW-4, 10 OCT 2019 to 07 NOV 2019