


WAAS CH 97407 W25A	APP CRS 252°	Rwy Idg TDZE Apt Elev	5503 1817 1817
--	------------------------	-----------------------------	---

RNAV (GPS) RWY 25

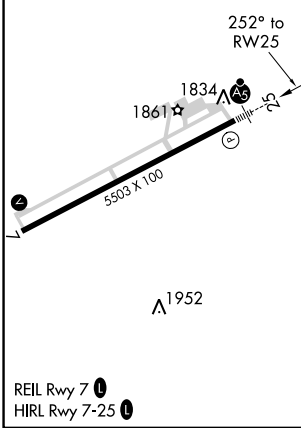
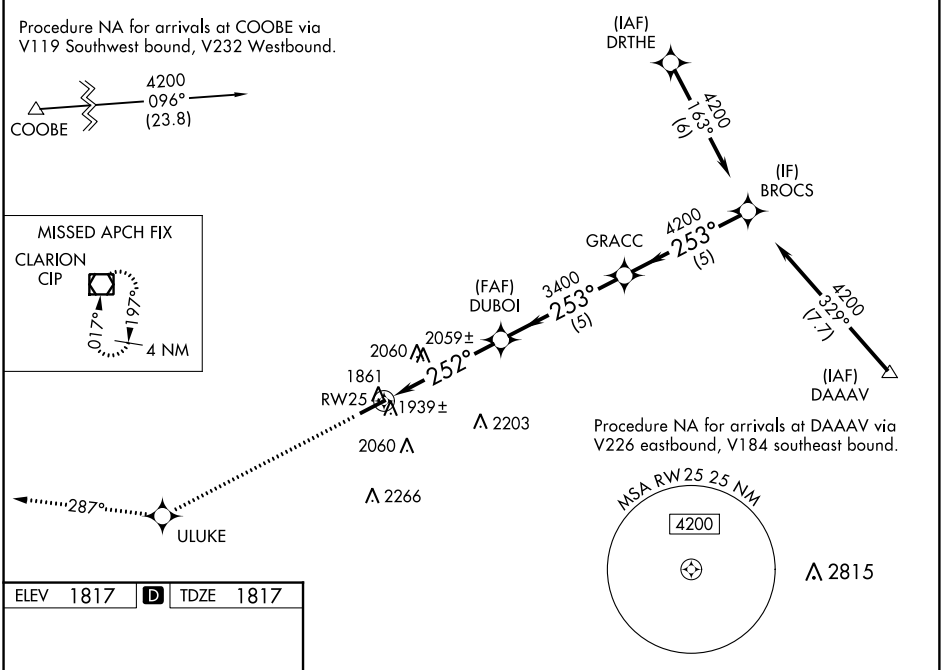
DUBOIS RGNL (DUJ)


⚠ Baro-VNAV NA when using Clearfield altimeter setting. For uncompensated Baro-VNAV systems, LNAV/VNAV NA below -18°C (0°F) or above 45°C (113°F). DME/DME RNP-0.3 NA. For inoperative MALSR when using Clearfield altimeter setting, increase LPV all Cats visibility to 1 mile. VDP NA with Clearfield altimeter setting. When local altimeter setting not received, use Clearfield altimeter setting and increase all DA 96 feet and all MDA 100 feet and LNAV Cat C and Circling Cat C visibilities ¼ mile and LNAV/VNAV all Cats and LNAV Cat D visibilities ½ mile.

MALSR


MISSED APPROACH: Climb to 4000 direct ULUKE and on track 287° to CIP VOR/DME and hold.

ASOS 119.025	CLEVELAND CENTER 126.725 291.65	UNICOM 123.0 (CTAF) ①
-------------------------------	--	--



4000	ULUKE	CIP	Procedure Turn NA	
↑	tr 287°		DUBOI	BROCS
*LNAV only.		*1.4 NM to RW25	GRACC	BROCS
		1.4	3400	4200
		3.3 NM	253°	4200
		5 NM	253°	4200
		5 NM	253°	4200
GP 3.00°	TCH 57			
CATEGORY	A	B	C	D
LPV DA	2017-½ 200 (200-½)			
LNAV/VNAV DA	2209-¾ 392 (400-¾)			
LNAV MDA	2320-½ 503 (600-½)		2320-1 503 (600-1)	
CIRCLING	2320-1 503 (600-1)		2380-2 563 (600-2)	

NE-4, 10 OCT 2019 to 07 NOV 2019

NE-4, 10 OCT 2019 to 07 NOV 2019