

WAAS CH <b>82116</b> <b>W07A</b>	APP CRS <b>072°</b>	Rwy Idg TDZE Apt Elev	<b>5503</b> <b>1816</b> <b>1817</b>
--	------------------------	-----------------------------	---

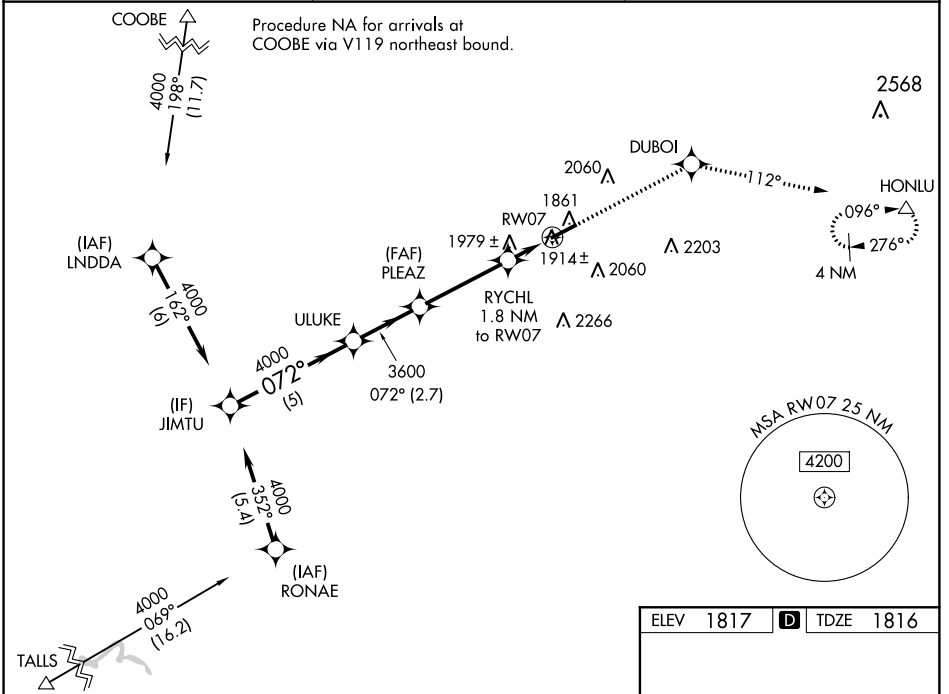
# RNAV (GPS) RWY 7

DUBOIS RGNL (DUJ)

**⚠** Baro-VNAV NA when using Clearfield altimeter setting. For uncompensated Baro-VNAV systems, LNAV/VNAV NA below -18°C (0°F) or above 45°C (113°F). DME/DME RNP-0.3 NA. Visibility reduction by helicopters NA. When local altimeter setting not received, use Clearfield altimeter setting and increase all DA 96 feet and all MDA 100 feet and LNAV/VNAV all Cats, LNAV Cat C and Circling Cat C visibilities ¼ mile and LPV all Cats and LNAV Cat D visibilities ½ mile. VDP NA with Clearfield altimeter setting.

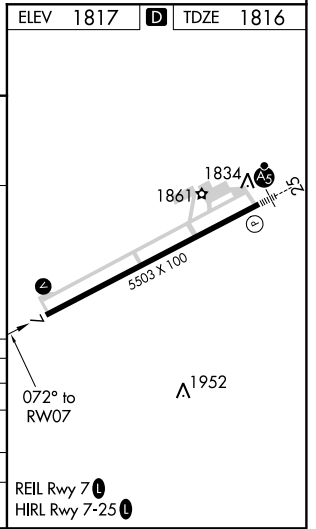
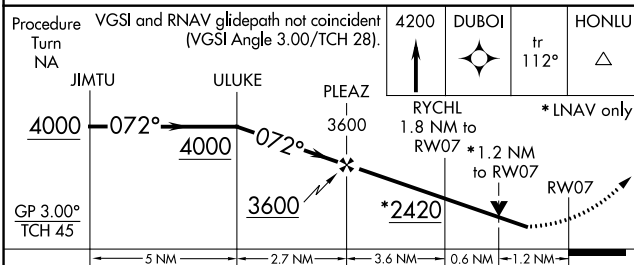
**MISSED APPROACH:** Climb to 4200 direct DUBOI and on track 112° to HONLU and hold.

ASOS <b>119.025</b>	CLEVELAND CENTER <b>126.725 291.65</b>	UNICOM <b>123.0 (CTAF) 0</b>
------------------------	---	---------------------------------



NE-4, 10 OCT 2019 to 07 NOV 2019

NE-4, 10 OCT 2019 to 07 NOV 2019



CATEGORY	A	B	C	D
LPV DA	2066-¾		250 (300-¾)	
LNAV/VNAV DA	2313-1¾		497 (500-1¾)	
LNAV MDA	2240-1	424 (500-1)	2240-1¼	424 (500-1¼)
CIRCLING	2300-1	483 (500-1)	2320-1½	2380-2
			503 (600-1½)	563 (600-2)