

| | | |
|-------------|----------|-------------|
| APP CRS | Rwy Idg | 4100 |
| 331° | TDZE | 750 |
| | Apt Elev | 750 |

RNAV (GPS) RWY 33

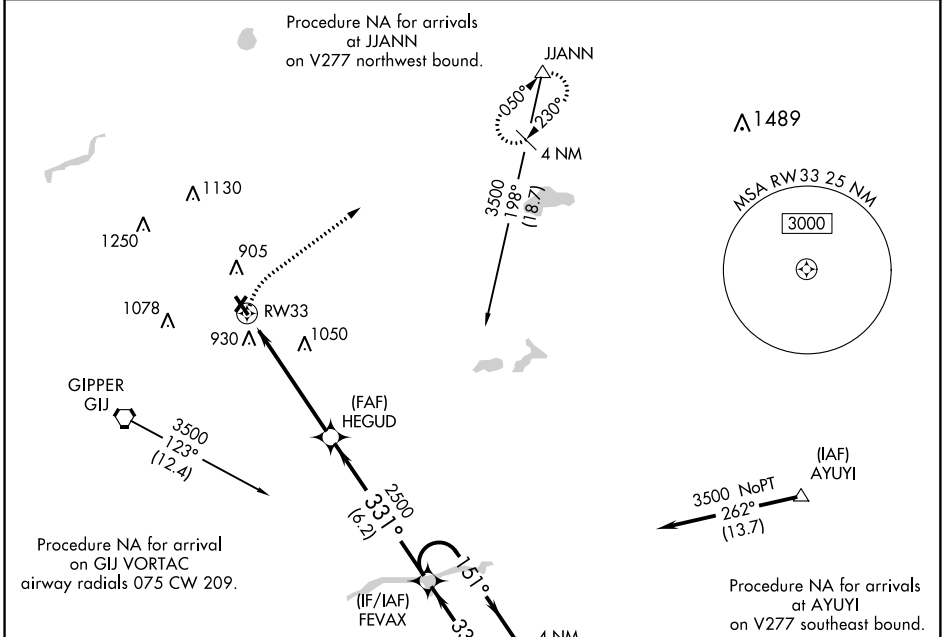
JERRY TYLER MEMORIAL (3TR)

RNP APCH.

▼ Procedure NA at night. Rwy 33 helicopter visibility reduction below 1 SM NA.
 ▲ NA Use South Bend altimeter setting; when not received, use Elkhart altimeter setting and increase all MDA 20 feet and all Cat C visibility 1/8 SM.

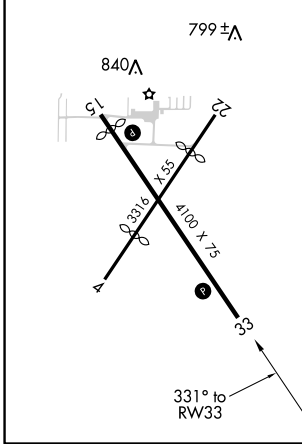
MISSED APPROACH: Climbing right turn to 3000 direct JJANN and hold.

| | | | |
|----------------|----------------------|----------------|-----------------------|
| SBN ASOS | SOUTH BEND APP CON * | GND CON | UNICOM |
| 120.675 | 118.55 257.8 | 121.725 | 122.8 (CTAF) 0 |



| | |
|----------|----------|
| ELEV 750 | TDZE 750 |
|----------|----------|

MIRL Rwy 15-33
 REIL Rwy 15 and 33



| | | | |
|------|--------|-----------------------------|-----------------------|
| 3000 | JJANN | Visual Segment - Obstacles. | 4 NM |
| | ▲ | | FEVAX Holding Pattern |
| | | HEGUD | |
| | | RW33 | |
| | 5.4 NM | 6.2 NM | |

| CATEGORY | A | B | C | D |
|----------|--------|-------------|-------------------------|----|
| LNAV MDA | 1320-1 | 570 (600-1) | 1320-1½ 570 (600-1½) | NA |
| CIRCLING | 1320-1 | 570 (600-1) | 1320-1½ 570 (600-1½) | NA |

EC-1, 10 OCT 2019 to 07 NOV 2019

EC-1, 10 OCT 2019 to 07 NOV 2019