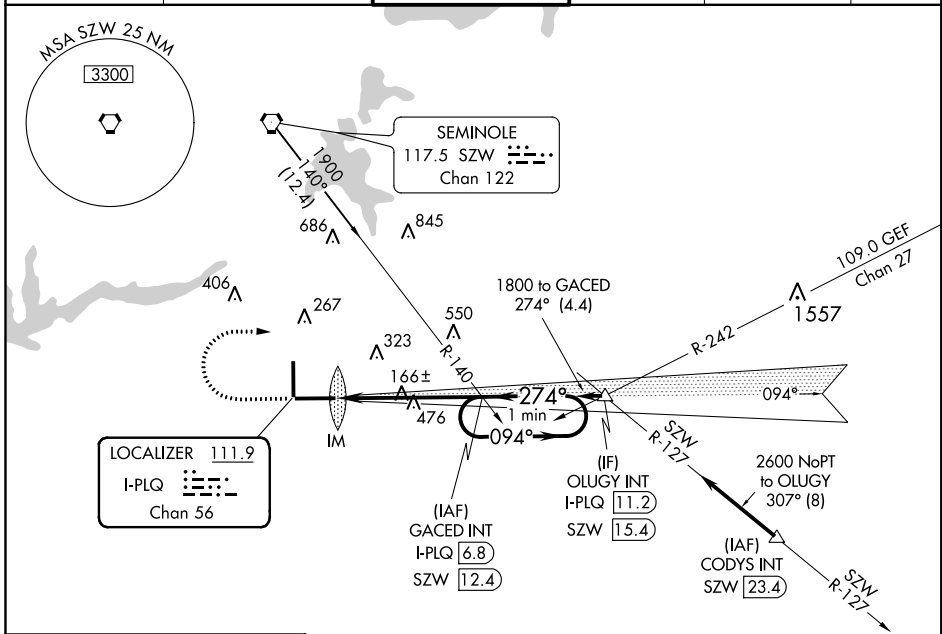


LOC/DME I-PLQ <b>111.9</b> Chan <b>56</b>	APP CRS <b>274°</b>	Rwy Idg TDZE Apt Elev	<b>8000</b> <b>58</b> <b>83</b>
---	------------------------	-----------------------------	---------------------------------------

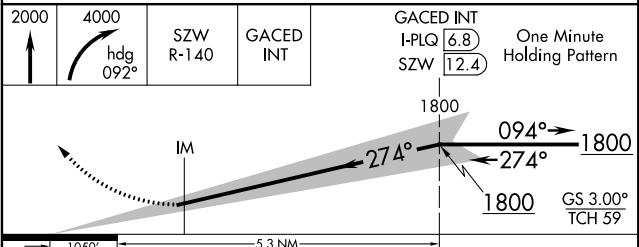
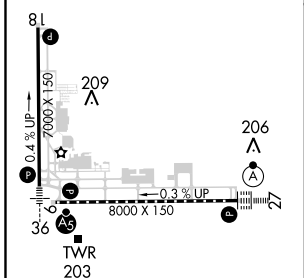
# ILS RWY 27 (CAT II)

TALLAHASSEE INTL (TLH)

DME required.		ALSIF-2	MISSED APPROACH: Climb to 2000 then climbing right turn to 4000 on heading 092° and on SZW VORTAC R-140 to GACED INT/SZW 12.4 DME and hold, continue climb-in-hold to 4000.		
S-ILS 27 NA when control tower closed.					
ATIS <b>119.45 239.25</b>	TALLAHASSEE APP CON * <b>135.8 317.4</b>	TALLAHASSEE TOWER * <b>118.7</b> (CTAF) <b>257.8</b>	GND CON <b>121.9 348.6</b>	CLNC DEL <b>126.65 275.8</b>	UNICOM <b>123.075</b>



ELEV 83	TDZE 58
---------	---------



CATEGORY	A	B	C	D
S-ILS 27	RA 114/12 100 DA 158			

**CATEGORY II ILS - SPECIAL AIRCREW & AIRCRAFT CERTIFICATION REQUIRED**

TDZ/CL Rwy 27  
REIL Rwys 9 and 18  
HIRL Rwys 9-27 and 18-36

SE-3, 10 OCT 2019 to 07 NOV 2019

SE-3, 10 OCT 2019 to 07 NOV 2019