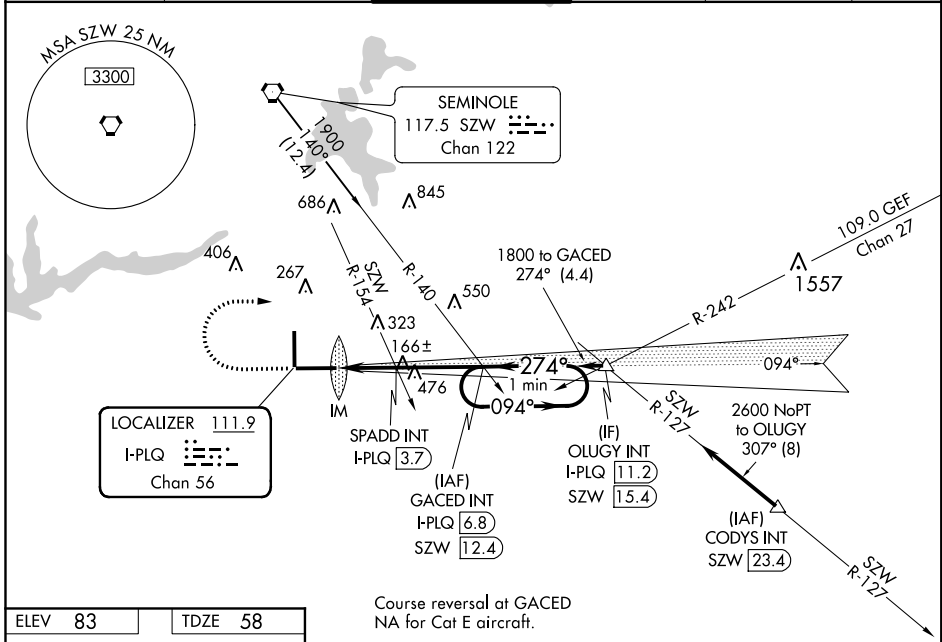


LOC/DME I-PLQ <b>111.9</b> Chan <b>56</b>	APP CRS <b>274°</b>	Rwy Idg TDZE Apt Elev	<b>8000</b> <b>58</b> <b>83</b>
---	------------------------	-----------------------------	---------------------------------------

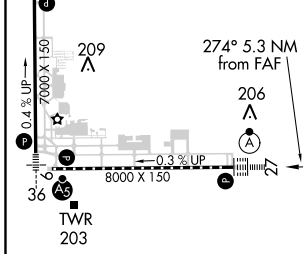
# ILS or LOC RWY 27

TALLAHASSEE INTL (TLH)

DME required.	ALS-2	MISSED APPROACH: Climb to 2000 then climbing right turn to 4000 on heading 092° and on SZW VORTAC R-140 to GACED INT/SZW 12.4 DME and hold, continue climb-in-hold to 4000.			
<p>For inop ALS, increase S-ILS 27 Cat E visibility to RVR 4000 and S-LOC 27 Cats C, D and E visibility to 2 SM. SPADD FIX MINIMUMS increase S-LOC 27 Cats C, D and E visibility to RVR 5500.</p>					
ATIS <b>119.45 239.25</b>	TALLAHASSEE APP CON ★ <b>135.8 317.4</b>	TALLAHASSEE TOWER ★ <b>118.7 (CTAF) 257.8</b>	GND CON <b>121.9 348.6</b>	CLNC DEL <b>126.65 275.8</b>	UNICOM <b>123.075</b>



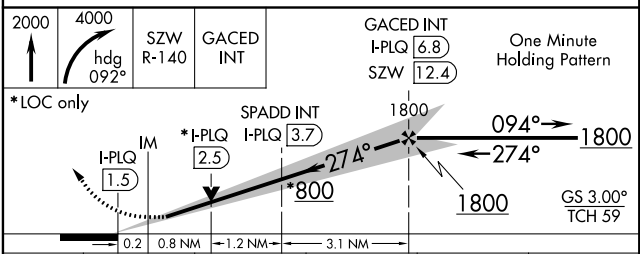
ELEV 83	TDZE 58
---------	---------



TDZ/CL Rwy 27  
REIL Rwys 9 and 18  
HIRL Rwys 9-27 and 18-36

FAF to MAP 5.3 NM

Knots	60	90	120	150	180
Min:Sec	5:18	3:32	2:39	2:07	1:46



CATEGORY	A	B	C	D	E
S-ILS 27	258/18 200 (200-½)				
S-LOC 27	800/24 742 (800-½)	800/40 742 (800-¾)	800-1¾ 742 (800-1¾)		
CIRCLING	800-1 717 (800-1)	800-1¼ 717 (800-1¼)	800-2 717 (800-2)	800-2¼ 717 (800-2¼)	1000-3 917 (1000-3)
SPADD FIX MINIMUMS					
S-LOC 27	420/24	362 (400-½)	420/35 362 (400-¾)		
CIRCLING	580-1 497 (500-1)	600-1 517 (600-1)	640-1½ 557 (600-1½)	800-2¼ 717 (800-2¼)	1000-3 917 (1000-3)

SE-3, 10 OCT 2019 to 07 NOV 2019

SE-3, 10 OCT 2019 to 07 NOV 2019