

MERIDIAN, MISSISSIPPI

# HI-ILS or LOC/DME RWY 19L

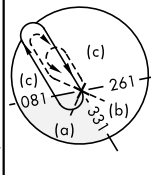
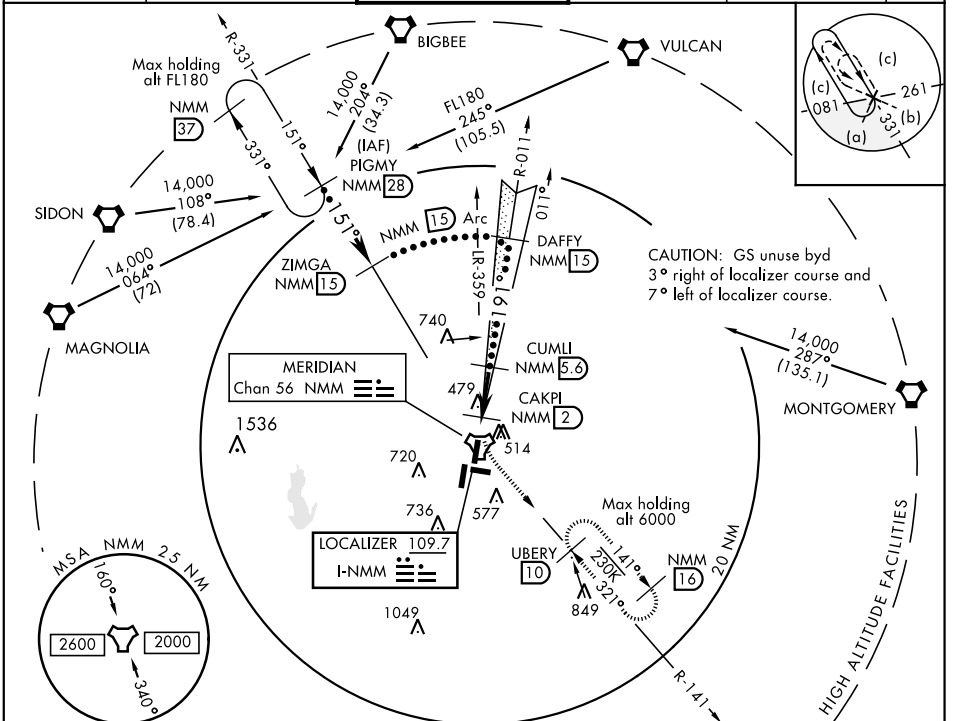
LOC I-NMM <b>109.7</b>	APCH CRS <b>191°</b>	Rwy ldg TDZE <b>8001</b> <b>316</b> Arpt Elev <b>316</b>	JAL-5079 [USN]	MERIDIAN NAS (MC CAIN FIELD) (KNMM)
---------------------------	-------------------------	--	----------------	-------------------------------------

\* When ALS inop, increase CAT CDE vis to  $\frac{3}{4}$  mile.  
 \*\* When ALS inop, increase CAT CDE vis to  $1\frac{1}{8}$  miles.

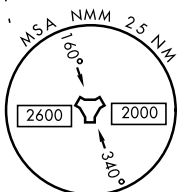
**MALS R**

**MISSED APPROACH:** Climb to 800 then climbing left turn to 2100 intercept NMM R-141 to UBERY and hold.

ATIS * <b>290.525</b>	MERIDIAN APP CON <b>120.95 276.4</b>	NAVY MC CAIN TOWER * <b>126.2 340.2</b>	GND CON <b>336.4</b>	CLNC DEL <b>301.0</b>	ASR/PAR
--------------------------	---	--	-------------------------	--------------------------	---------



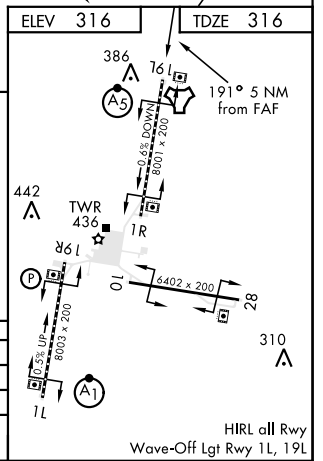
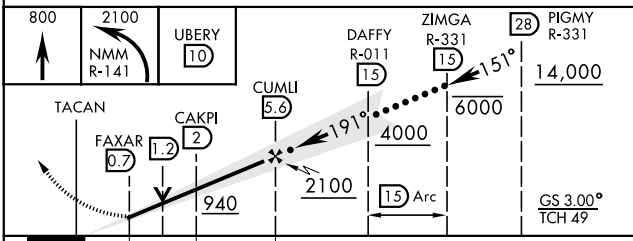
CAUTION: GS unus byd 3° right of localizer course and 7° left of localizer course.



SC-4, 10 OCT 2019 to 07 NOV 2019

SC-4, 10 OCT 2019 to 07 NOV 2019

EMERG SAFE ALT 100 NM 3700



CATEGORY	C	D	E
S-ILS 19L *	516- $\frac{1}{2}$	200	(200- $\frac{1}{2}$ )
S-LOC 19L**	700- $\frac{5}{8}$	384	(400- $\frac{5}{8}$ )
CIRCLING	840-1 $\frac{1}{2}$ 524 (600-1 $\frac{1}{2}$ )	880-2 564 (600-2)	1080-2 $\frac{3}{4}$ 764 (800-2 $\frac{3}{4}$ )

MERIDIAN, MISSISSIPPI      32° 33' N - 88° 33' W      MERIDIAN NAS (MC CAIN FIELD) (KNMM)

Am d 3 12SEP19

# HI-ILS or LOC/DME RWY 19L