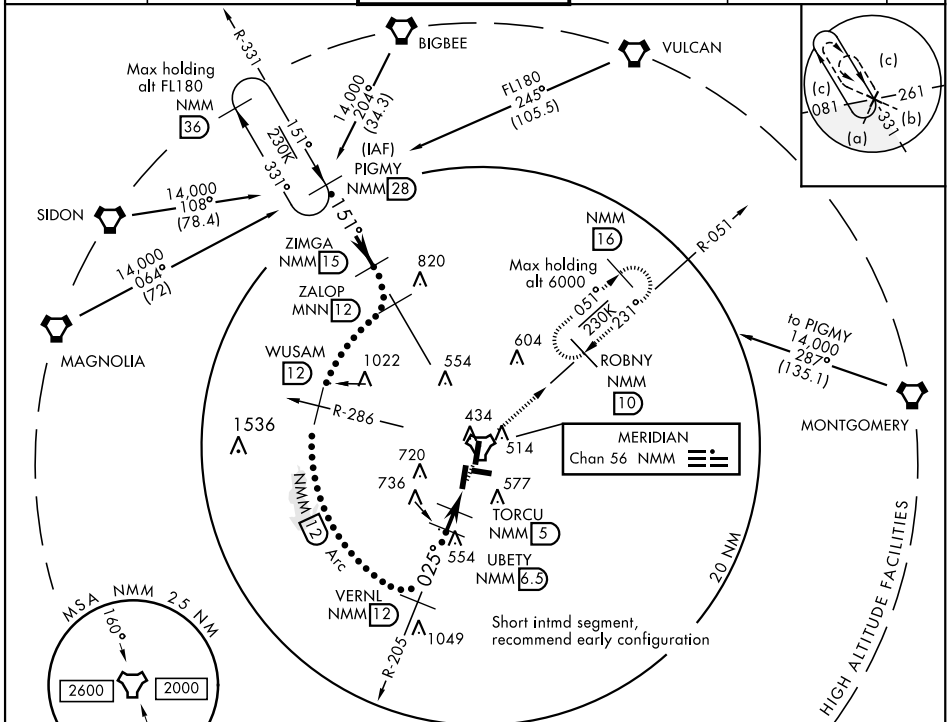


HI-TACAN RWY 1L

TACAN NMM Chan 56	APCH CRS 025°	Rwy ldg TDZE 8003 Arpt Elev 254 316	JAL-5079 [USN]	MERIDIAN NAS (MC CAIN FIELD) (KNMM)
▼ * When ALS inop, increase CAT CDE vis to 1½ miles.			ALSF-1	MISSED APPROACH: Climb to 2100 via NMM R-205 to NMM TACAN then via R-051 to ROBNY and hold.

ATIS ★ 290.525	MERIDIAN APP CON 120.95 276.4	NAVY MC CAIN TOWER ★ 126.2 340.2	GND CON 336.4	CLNC DEL 301.0	ASR/PAR
-----------------------	--------------------------------------	---	----------------------	-----------------------	---------



SC-4, 10 OCT 2019 to 07 NOV 2019

SC-4, 10 OCT 2019 to 07 NOV 2019

EMERG SAFE ALT 100 NM 3700		ELEV 316		TDZE 254	
PIGMY R-331	ZIMGA R-331	ZALOP R-286	WUSAM R-286	VERNL R-205	UBETY R-205
14,000	14,000	14,000	14,000	14,000	14,000
6000	6000	6000	6000	6000	6000
4000	4000	4000	4000	4000	4000
2100	2100	2100	2100	2100	2100
1400	1400	1400	1400	1400	1400
900	900	900	900	900	900
3.09° TCH 50	025°	025°	025°	025°	025°
1.5 NM	1 NM	0.8			
310	310	310	310	310	310
442	442	442	442	442	442
TWR 436	TWR 436	TWR 436	TWR 436	TWR 436	TWR 436
10	10	10	10	10	10
6402 x 200	6402 x 200	6402 x 200	6402 x 200	6402 x 200	6402 x 200
10.3% UP x 200	10.3% UP x 200	10.3% UP x 200	10.3% UP x 200	10.3% UP x 200	10.3% UP x 200
8003 x 200	8003 x 200	8003 x 200	8003 x 200	8003 x 200	8003 x 200
8003 x 200	8003 x 200	8003 x 200	8003 x 200	8003 x 200	8003 x 200
025° to TACAN	025° to TACAN	025° to TACAN	025° to TACAN	025° to TACAN	025° to TACAN
Wave-Off Lgt Rwy 1L, 19L	Wave-Off Lgt Rwy 1L, 19L	Wave-Off Lgt Rwy 1L, 19L	Wave-Off Lgt Rwy 1L, 19L	Wave-Off Lgt Rwy 1L, 19L	Wave-Off Lgt Rwy 1L, 19L
HIRL all Rwy	HIRL all Rwy	HIRL all Rwy	HIRL all Rwy	HIRL all Rwy	HIRL all Rwy

HI-TACAN RWY 1L