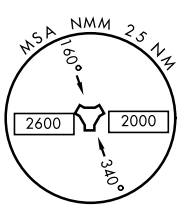


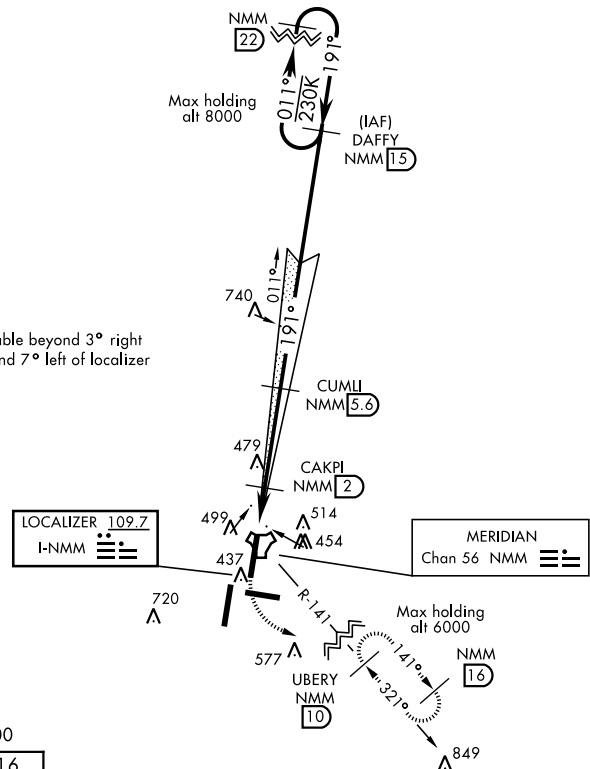
MERIDIAN, MISSISSIPPI

ILS or LOC/DME RWY 19L

LOC I-NMM 109.7	APCH CRS 191°	Rwy ldg TDZE Arprt Elev 8001 316 316	AL-5079 [USN]	MERIDIAN NAS (MC CAIN FIELD) (KNMM)	
▼ * When ALS inop, increase all CAT vis to ¾ mile. ** When ALS inop, increase CAT AB vis to 1 mile, CAT CD vis to 1½ miles.			MALS R 	MISSED APPROACH: Climb to 800, then climbing left turn to 2100 to intercept NMM R-141 to UBERY and hold.	
ATIS ★ 290.525	MERIDIAN APP CON 120.95 276.4	NAVY MC CAIN TOWER ★ 126.2 340.2	GND CON 336.4	CLNC DEL 301.0	ASR/PAR



CAUTION: GS unusable beyond 3° right of localizer course and 7° left of localizer course.



SC-4, 10 OCT 2019 to 07 NOV 2019

SC-4, 10 OCT 2019 to 07 NOV 2019

RADAR REQUIRED
EMERG SAFE ALT 100 NM 3700

ELEV 316	TDZE 316				
		800	2100	UBERY NMM 10	DAFFY 15
		NMM R-141	CUMLI 5.6	2100	011° → 4000
		TACAN	CAKPI 2	191°	← 191° 4000
		FAXAR 0.7	940	2100	GS 3.00° TCH 49°
		5	1.3 NM	3.6 NM	
CATEGORY	A	B	C	D	
S-ILS 19L *		516-½	200	(200-½)	
S-LOC 19L **	700-½	384 (400-½)	700-¾	384 (400-¾)	
CIRCLING	840-1	524 (600-1)	840-1 ½	880-2	
			524 (600-1 ½)	564 (600-2)	

MERIDIAN, MISSISSIPPI 32° 33' N-88° 33' W MERIDIAN NAS (MC CAIN FIELD) (KNMM)

Amr 2 12SEP19

ILS or LOC/DME RWY 19L