

MERIDIAN, MISSISSIPPI

RNAV (GPS) RWY 19L

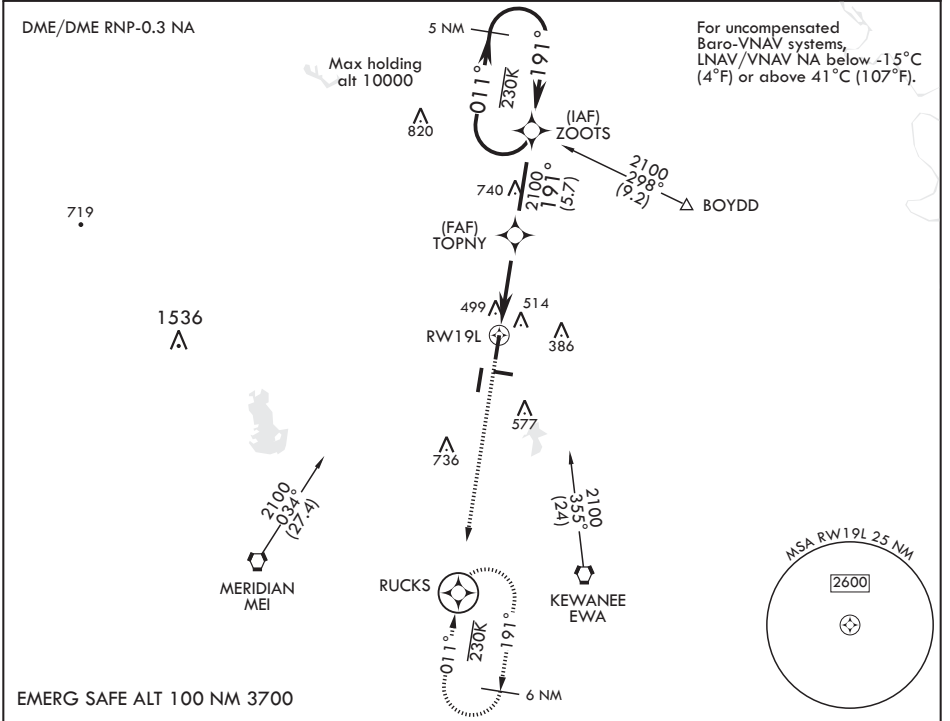
APCH CRS 191°	Rwy Idg 8001
	TDZE 316
	Arprt Elev 316

AL-5079 (USN)

MERIDIAN NAS (MC CAIN FLD) (KNMM)


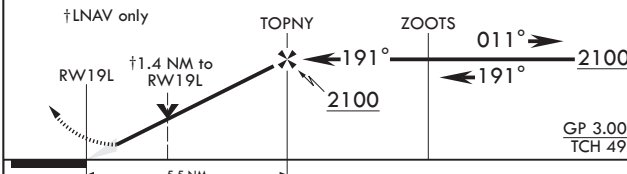
<p>⚠ * When ALS inop, increase CAT AB vis to 1 mile, increase CAT CDE to 1 3/8 miles. ** When ALS inop, increase CAT ABCDE vis to 1 3/8 miles.</p>	<p>MALSR </p>	<p>MISSED APPROACH: Climb to 2100 direct RUCKS and hold.</p>
--	---	--

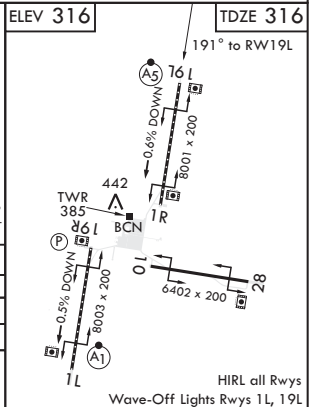
<p>ATIS* 290.525</p>	<p>APP CON 119.2 348.7 E 379.275 N 120.5 269.325 S 120.95 276.4 W</p>	<p>MC CAIN TOWER* 126.2 340.2 RWY 01L, 19L AND 28 126.2 360.2 RWY 01R, 19R AND 10</p>	<p>MC CAIN GND CON 336.4</p>	<p>CLNC DEL 301.0</p>	<p>ASR/PAR</p>
---------------------------------	---	---	---	----------------------------------	----------------



For uncompensated Baro-VNAV systems, LNAV/VNAV NA below -15°C (4°F) or above 41°C (107°F).

EMERG SAFE ALT 100 NM 3700

<p>2100 RUCKS </p>	<p>5 NM holding pattern</p>	<p>ELEV 316</p>	<p>TDZE 316</p>		
<p>↑ LNAV only</p>					
<p>  </p>					
<p>GP 3.00° TCH 49</p>					
CATEGORY	A	B	C	D	E
LNAV/VNAV DA**	800-1		484	(500-1)	
LNAV MDA*	800-1/2	484 (500-1/2)	800-1	484	(500-1)
CIRCLING	840-1	524 (600-1)	840-1 1/2 524 (600-1 1/2)	880-2 564 (600-2)	1080-2 3/4 764 (800-2 3/4)



MERIDIAN, MISSISSIPPI

32°33'N - 88°33'W

MERIDIAN NAS (MC CAIN FLD) (KNMM)

Amdt 2 12SEP19

RNAV (GPS) RWY 19L

SC-4, 10 OCT 2019 to 07 NOV 2019

SC-4, 10 OCT 2019 to 07 NOV 2019