

MERIDIAN, MISSISSIPPI

# RNAV (GPS) RWY 1L

APCH CRS 011°	Rwy Idg TDZE Arpt Elev	8003 254 316
------------------	------------------------------	--------------------

AL-5079 (USN)

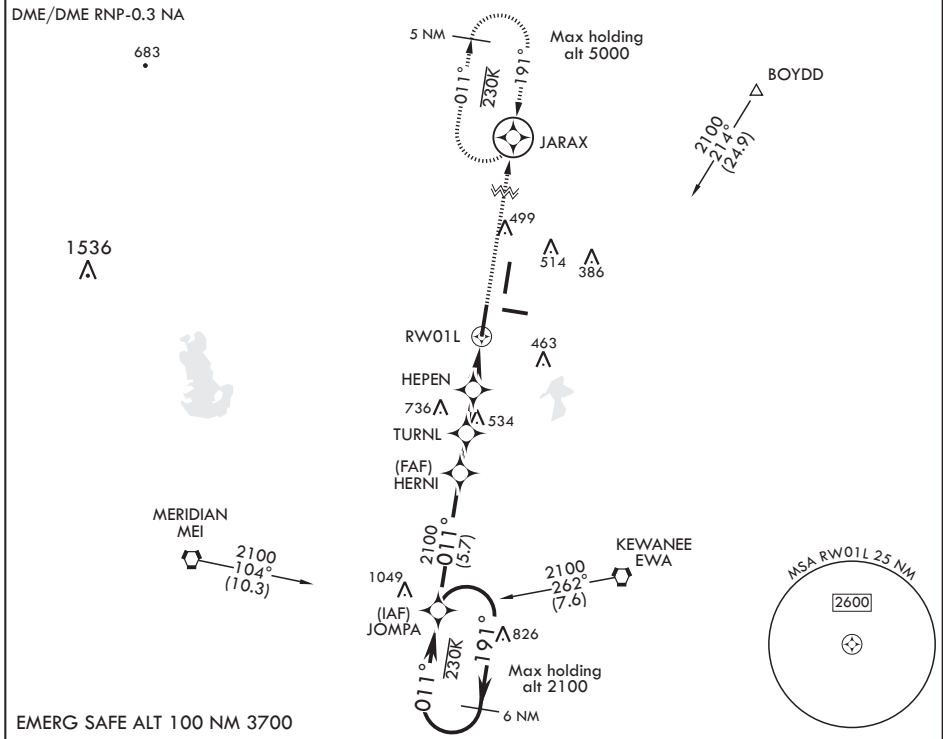
MERIDIAN NAS (MC CAIN FLD) (KNMM)

▼ \* When ALS inop, increase CAT AB vis to 1 mile, CAT CDE to 1 3/8 miles.

ALSF-1

MISSED APPROACH: Climb to 2100 direct JARAX and hold.

ATIS★ 290.525	APP CON 119.2 348.7 E 379.275 N 120.5 269.325 S 120.95 276.4 W	MC CAIN TOWER★ 126.2 340.2 RWY 01L, 19L AND 28 126.2 360.2 RWY 01R, 19R AND 10	MC CAIN GND CON 336.4	CLNC DEL 301.0	ASR/PAR
------------------	--	--	--------------------------	-------------------	---------



EMERG SAFE ALT 100 NM 3700

6 NM holding pattern

CATEGORY	A	B	C	D	E
LNAV MDA*	760-1/2	506 (500-1/2)	760-1	506	(500-1)
CIRCLING	840-1	524 (600-1)	840-1 1/2 524 (600-1 1/2)	880-2 564 (600-2)	1080-2 3/4 764 (800-2 3/4)

2100 JARAX ELEV 316 TDZE 254

3.00° ≥ TCH 50

1.7 NM, 1.8 NM, 2.2 NM

1.4 NM to RWY 1L

0.5% UP, 0.6% UP

8003 x 200, 800 x 200, 6402 x 200

011° to RWY 1L

HIRL all Rwys  
Wave-Off Lights Rwy 1L, 19L

MERIDIAN, MISSISSIPPI

32°33'N - 88°33'W

MERIDIAN NAS (MC CAIN FLD) (KNMM)

Amdt 2 12SEP19

# RNAV (GPS) RWY 1L

SC-4, 10 OCT 2019 to 07 NOV 2019

SC-4, 10 OCT 2019 to 07 NOV 2019