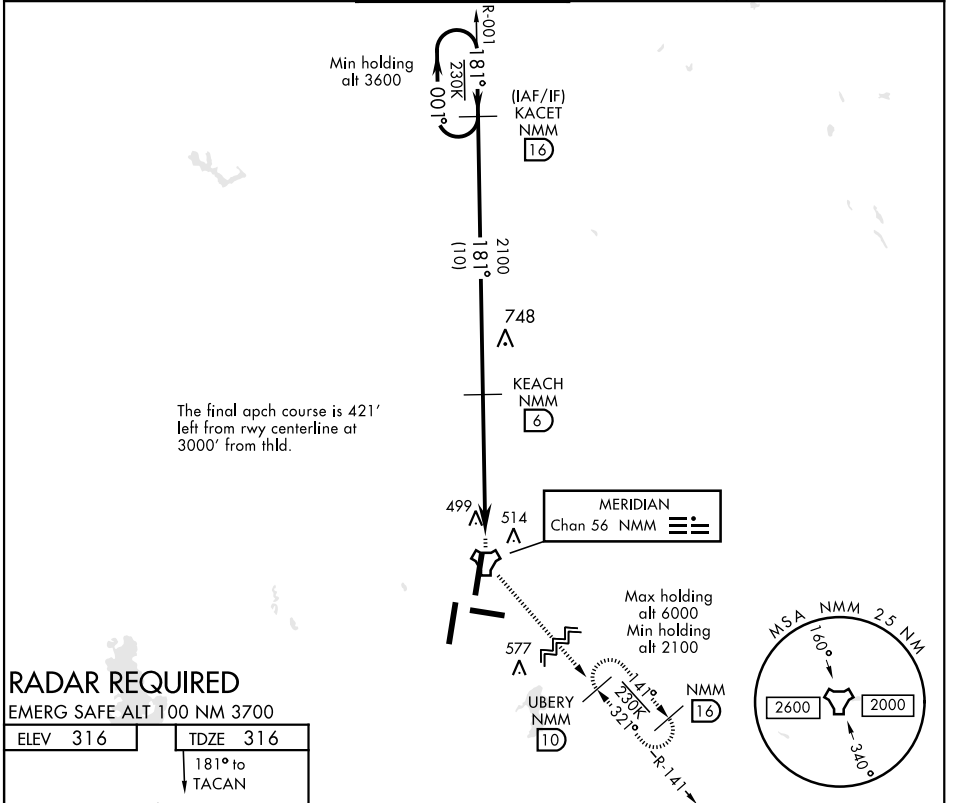


TACAN RWY 19L

TACAN NMM Chan 56	APCH CRS 181°	Rwy ldg TDZE 8001 316 Arpt Elev 316	JAL-5079 [USN]	MERIDIAN NAS (MC CAIN FIELD) (KNMM)
--------------------------	----------------------	--	----------------	-------------------------------------

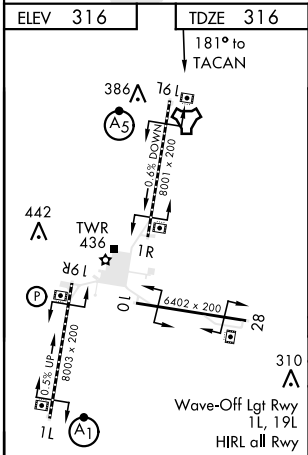
A5 MALSR
 * When ALS inop, increase CAT AB vis to 1 mile; CDE vis to 1 3/8 miles.
 MISSED APPROACH: Climb to 2100 direct NMM TACAN then via R-141 to UBERY and hold.

ATIS ★ 290.525	MERIDIAN APP CON 120.95 276.4	NAVY MC CAIN TOWER ★ 126.2 340.2	GND CON 336.4	CLNC DEL 301.0	ASR/PAR
-----------------------	--------------------------------------	---	----------------------	-----------------------	---------



RADAR REQUIRED

EMERG SAFE ALT 100 NM 3700



KACET NMM 16

2100

3600

181°

181°

KEACH NMM 6

2100

TACAN

UBERY NMM 10

VERTC 9

5.1 NM

7 NM

CATEGORY	A	B	C	D	E
S-19L *	800-1/2	484 (500-1/2)	800-1	484	(500-1)
CIRCLING	840-1 524 (600-1)	840-1/2 524 (600-1 1/2)	880-2 564 (600-2)	1080-2 3/4 764 (800-2 3/4)	

TACAN RWY 19L

SC-4, 10 OCT 2019 to 07 NOV 2019

SC-4, 10 OCT 2019 to 07 NOV 2019