

MERIDIAN, MISSISSIPPI

TACAN RWY 1L

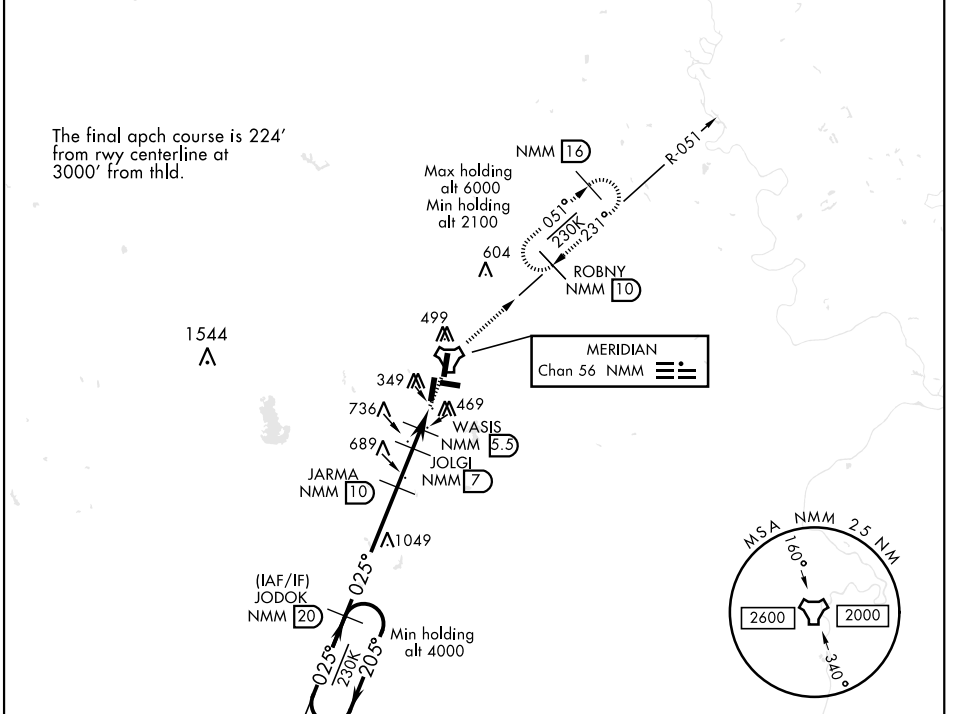
TACAN NMM Chan 56	APCH CRS 025°	Rwy ldg TDZE 8003 Arprt Elev 254 316	JAL-5079 [USN]	MERIDIAN NAS (MC CAIN FIELD) (KNMM)
-----------------------------	-------------------------	--	----------------	-------------------------------------

▼ * When ALS inop, increase CAT AB vis to 1 mile; CAT CDE vis to 1 3/8 miles.

ALSF-1
A1

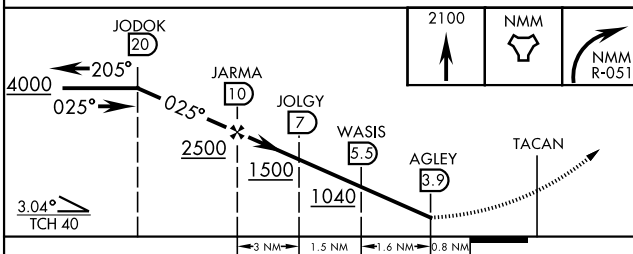
MISSED APPROACH: Climb to 2100 direct NMM TACAN then via R-051 to ROBNY and hold.

ATIS ★ 290.525	MERIDIAN APP CON 120.95 276.4	NAVY MC CAIN TOWER ★ 126.2 340.2	GND CON 336.4	CLNC DEL 301.0	ASR/ PAR
--------------------------	---	--	-------------------------	--------------------------	-------------

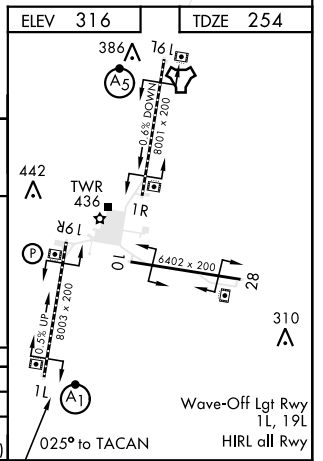


RADAR REQUIRED

EMERG SAFE ALT 100 NM 3700



CATEGORY	A	B	C	D	E
S-1L *	760-1/2	506 (500-1/2)	760-1	506 (500-1)	
CIRCLING	840-1	524 (600-1)	840-1 1/2 524 (600-1 1/2)	880-2 564 (600-2)	1080-2 3/4 764 (800-2 3/4)



MERIDIAN, MISSISSIPPI 32°33' N -88°33' W MERIDIAN NAS (MC CAIN FIELD) (KNMM)

Orig 12SEP19

TACAN RWY 1L

SC-4, 10 OCT 2019 to 07 NOV 2019

SC-4, 10 OCT 2019 to 07 NOV 2019