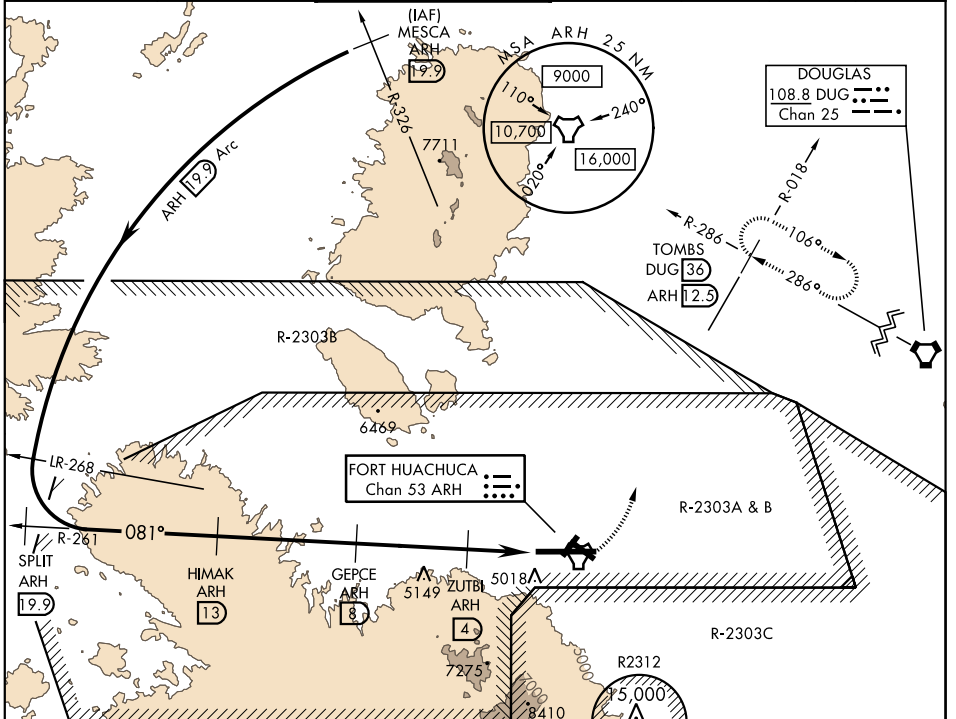


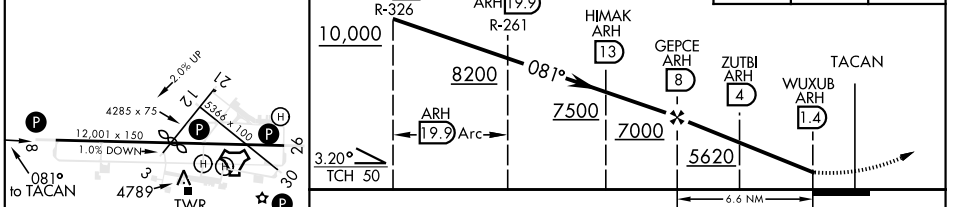
TACAN ARH Chan 53	APCH CRS 081°	Rwy ldg 12,001 TDZE Arprt Elev 4719	AL-5081 [USA]	FORT HUACHUCA-SIERRA VISTA/ SIERRA VISTA MUNI-LIBBY AAF (KFHU)
-----------------------------	-------------------------	---	---------------	---

▼ * Circling not authorized South of Rwy 8 and 30. MISSED APPROACH: Climb to 5500 then climbing left turn to 9500 via ARH R-018 to TOMBS INT/DUG 36 DME and hold.

ATIS ★ 134.75 263.025	LIBBY AAF GCA 127.05 254.35	LIBBY TOWER ★ 124.95 (CTAF) 0 284.75	GND CON 121.7 268.7	ASR/PAR	UNICOM 122.95	ASOS 119.675
---------------------------------	---------------------------------------	--	-------------------------------	---------	-------------------------	------------------------



ELEV 4719	TDZE 4719	VGSI and descent angle not coincident.	5500	9500	TOMBS
-----------	-----------	--	------	------	-------



	A	B	C	D	E
S-8	5260-1	541 (600-1)	5260-1½ 541 (600-1½)	5260-1¾ 541 (600-1¾)	5260-2 541 (600-2)
CIRCLING *	5260-1	541 (600-1)	5260-1½ 541 (600-1½)	5280-2	561 (600-2)

SW-4, 10 OCT 2019 to 07 NOV 2019

SW-4, 10 OCT 2019 to 07 NOV 2019

MIRL Rwy 3-21
MIRL Rwy 8-26
MIRL Rwy 12-30
Rwy 3 ldg 3032'