


LOC/DME I-TBN 110.9 Chan 46	APP CRS 147°	Rwy Idg 5535 TDZE 1158 Apt Elev 1160
--	------------------------	--

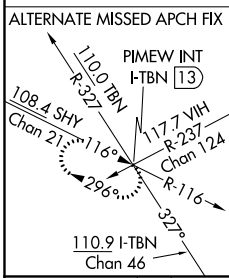
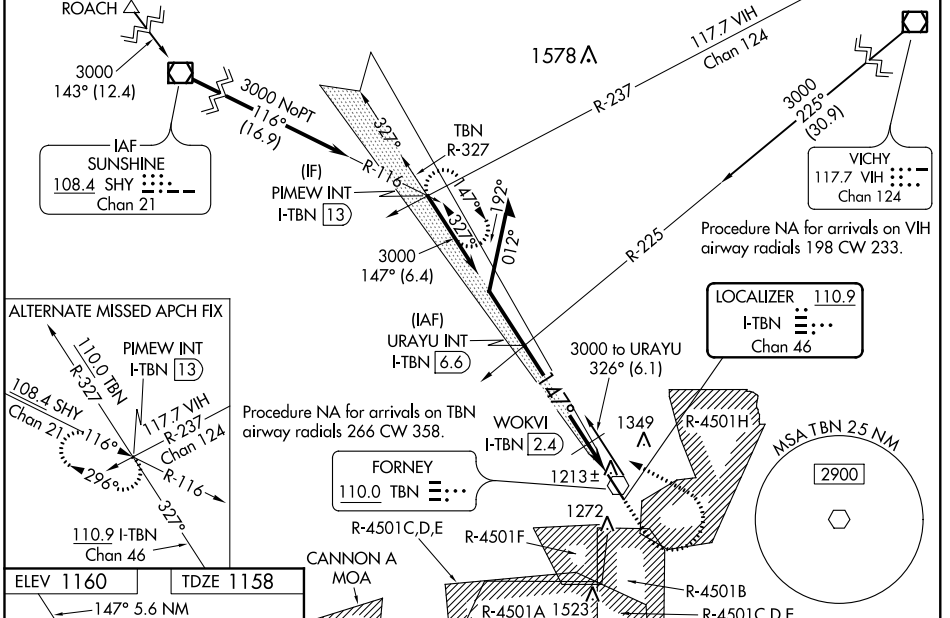
ILS or LOC RWY 15

WAYNESVILLE-ST ROBERT RGNL FORNEY FIELD (T'BN)

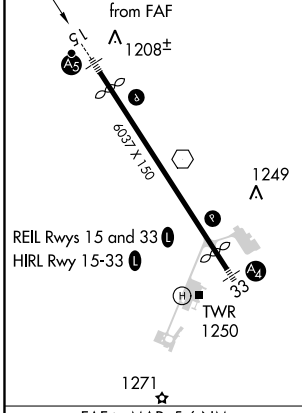
⚠ Circling NA west of Rwy 15-33. For inop ALS increase S-LOC 15 Cats C/D visibility to 1 3/8 SM. When local altimeter setting not received, use Rolla National altimeter setting and increase DA to 1427 feet; and all MDAs 80 feet, increase S-LOC 15 Cat C/D and Circling Cat C visibility 1/4 SM and WOKVI fix minimums S-LOC 15 Cat C/D and Circling Cat C visibility 1/4 SM. VDP NA when using Rolla National altimeter setting. For inop ALS when using Rolla National altimeter setting increase S-LOC 15 WOKVI fix minimums Cats C/D visibility to 1 1/4 SM. Inop table does not apply to S-ILS 15, S-LOC 15 Cat A/B, and WOKVI fix minimums S-LOC 15.

MALSR  MISSED APPROACH: Climb to 1700 then climbing left turn to 3000 on heading 298° and TBN VOR R-327 to PIMEW INT/I-TBN 13 DME and hold.

D-ATIS 118.7 229.4	KANSAS CITY CENTER 128.35 284.675	FORNEY TOWER* 125.4 (CTAF) 0 268.7	GND CON 123.75 256.8
------------------------------	---	--	--------------------------------



ELEV 1160	TDZE 1158
-----------	-----------



#1740 when using Rolla National altimeter setting. Remain within 10 NM

URAYU INT I-TBN [6.6] 1700 3000

WOKVI I-TBN [2.4] *I-TBN [1.9] I-TBN [T]

GS 3.00° TCH 47

*LOC only.

4.2 NM 0.5 NM 0.9 NM

CATEGORY	A	B	C	D
S-ILS 15		1358-1	200 (200-1)	
S-LOC 15		1660-1	502 (500-1)	
C CIRCLING	1660-1	500 (500-1)	1660-1 1/2 500 (500-1 1/2)	1720-2 560 (600-2)
WOKVI FIX MINIMUMS				
S-LOC 15	1500-1 342 (400-1)			
C CIRCLING	1580-1 420 (500-1)	1660-1 500 (500-1)	1660-1 1/2 500 (500-1 1/2)	1720-2 560 (600-2)

FAF to MAP 5.6 NM					
Knots	60	90	120	150	180
Min:Sec	5:36	3:44	2:48	2:14	1:52

NC-3, 10 OCT 2019 to 07 NOV 2019

NC-3, 10 OCT 2019 to 07 NOV 2019