

| | | | |
|--|------------------------|-----------------------------|---|
| WAAS CH 99499 W33A | APP CRS 327° | Rwy Idg TDZE Apt Elev | 5510 1153 1160 |
|--|------------------------|-----------------------------|---|

RNAV (GPS) RWY 33

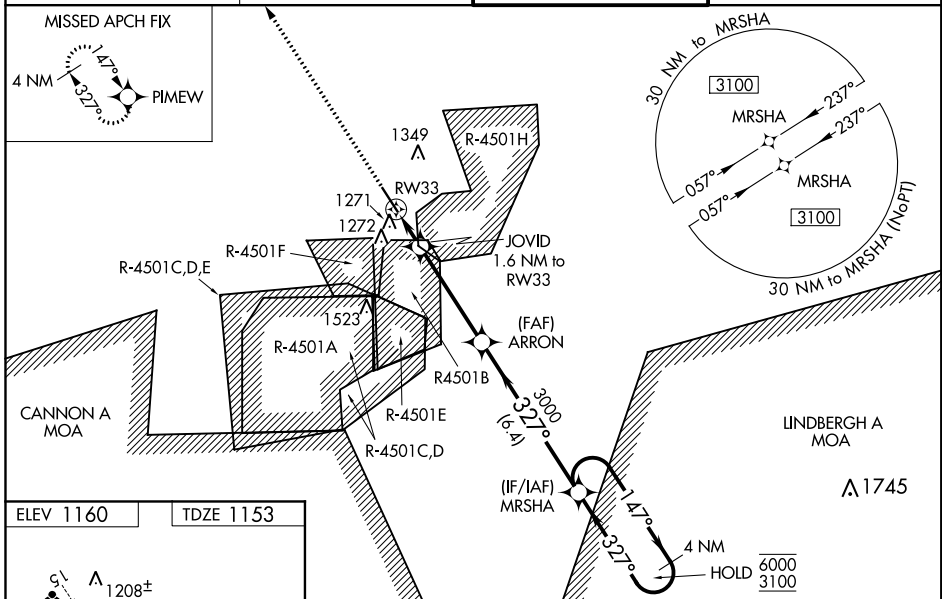
WAYNESVILLE-ST ROBERT RGNL FORNEY FIELD (T'BN)

RNP APCH.

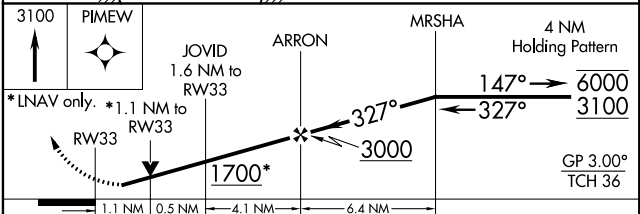
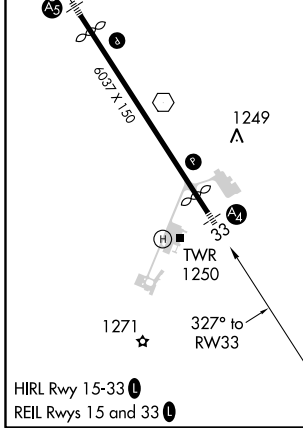
⚠ Baro-VNAV NA when using Rolla National altimeter setting. For uncompensated Baro-VNAV systems, LNAV/VNAV NA below -18°C or above 54°C. When local altimeter setting not received, use Rolla National altimeter setting and increase LPV DA to 1472 feet; increase LNAV/VNAV DA to 1521 feet and all MDAs 80 feet. Increase LNAV Cat C/D visibility to RVR 6000. Inop table does not apply to LPV, LNAV/VNAV, all Cats, and LNAV Cats A/B minimums. For inop ALS increase LNAV Cats C/D visibility to RVR 6000. VDP and Baro-VNAV NA when using Rolla National altimeter setting. Circling NA west of Rwy 15-33. Rwy 33 helicopter visibility reduction below ¾ SM NA. Inop table does not apply to LPV, LNAV/VNAV, all Cats, and LNAV Cats A/B minimums when using Rolla National altimeter setting.

MALS
A2 MISSED APPROACH: Climb to 3100 direct PIMEW and hold.

| | | | |
|-------------------------------------|--|--|---------------------------------------|
| D-ATIS 118.7 229.4 | KANSAS CITY CENTER 128.35 284.675 | FORNEY TOWER * 125.4 (CTAF) 0 268.7 | GND CON 123.75 256.8 |
|-------------------------------------|--|--|---------------------------------------|



| | |
|-----------|-----------|
| ELEV 1160 | TDZE 1153 |
|-----------|-----------|



| CATEGORY | A | B | C | D |
|-------------------|-----------------------|-----------------------|-------------------------|-----------------------|
| LPV DA | | 1403/50 | 250 (300-1) | |
| LNAV/VNAV DA | | 1452/50 | 299 (300-1) | |
| LNAV MDA | | 1540/50 | 387 (400-1) | |
| C CIRCLING | 1580-1 420 (500-1) | 1660-1 500 (500-1) | 1660-1½ 500 (500-1½) | 1720-2 560 (600-2) |

NC-3, 10 OCT 2019 to 07 NOV 2019

NC-3, 10 OCT 2019 to 07 NOV 2019