


VOR TBN	APP CRS	Rwy Idg	5535
110.0	138°	TDZE	1158
		Apt Elev	1160

VOR RWY 15

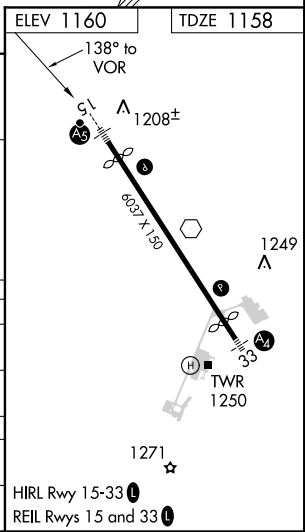
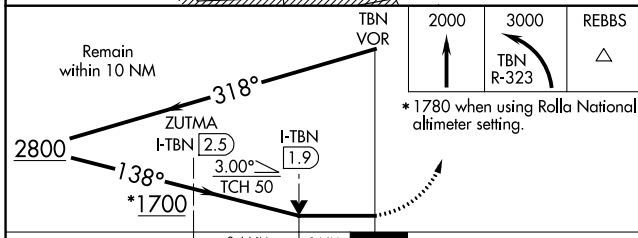
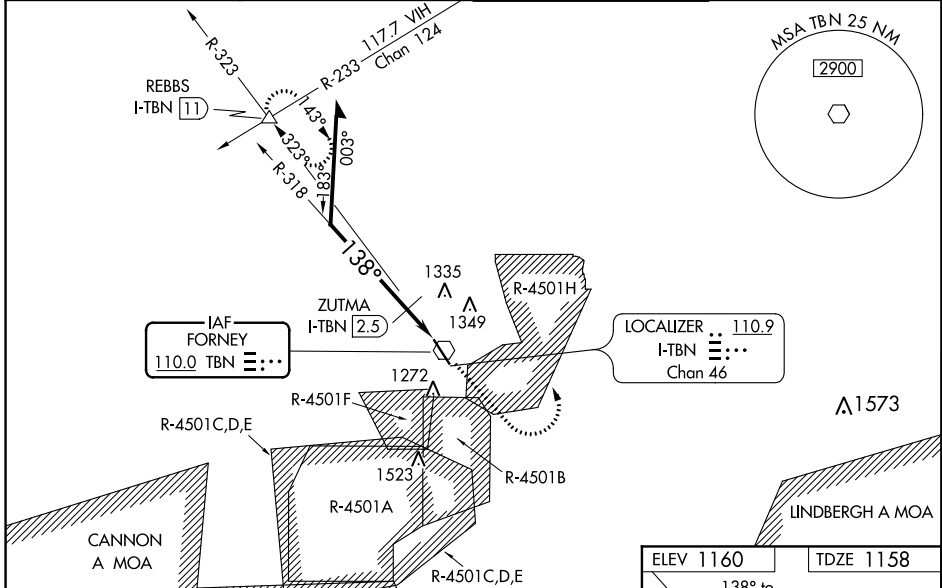
WAYNESVILLE-ST ROBERT RGNL FORNEY FIELD (TBN)

⚠ Procedure NA when R-4501B or R-4501H in use. Inop table does not apply to S-15 Cat A and B or to ZUTMA fix minimums. Circling NA west of Rwy 15-33. When local altimeter setting not received, use Rolla National altimeter setting and increase all MDAs 80 feet and increase S-15 visibility Cats C/D ¼ SM and Circling Cat C visibility ½ SM. Inop table does not apply to Cats A/B when using Rolla National altimeter setting. For inop ALS when using Rolla National altimeter setting increase S-15 Cats C/D visibility to 1¼ SM. For inop ALS when using Rolla National altimeter setting increase S-15 ZUTMA fix minimums Cats C/D visibility to 1¾ SM. # DME from I-TBN LOC/DME.

MALSR


MISSED APPROACH: Climb to 2000 then climbing left turn to 3000 on TBN VOR R-323 to REBBS INT/I-TBN LOC/DME 11 DME and hold.

D-ATIS 118.7 229.4	KANSAS CITY CENTER 128.35 284.675	FORNEY TOWER ★ 125.4 (CTAF) 0 268.7	GND CON 123.75 256.8
------------------------------	---	---	--------------------------------



CATEGORY	A	B	C	D
S-15	1700-1	542 (600-1)	1700-1½	542 (600-1½)
C CIRCLING	1700-1	540 (600-1)	1700-1½	1720-2 540 (600-1½) 560 (600-2)
ZUTMA FIX MINIMUMS #				
S-15	1520-1		362 (400-1)	
C CIRCLING	1580-1 420 (500-1)	1660-1 500 (500-1)	1660-1½ 500 (500-1½)	1720-2 560 (600-2)

NC-3, 10 OCT 2019 to 07 NOV 2019

NC-3, 10 OCT 2019 to 07 NOV 2019

VOR RWY 15