

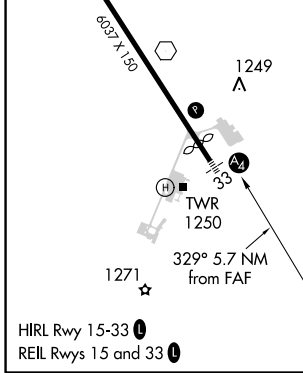
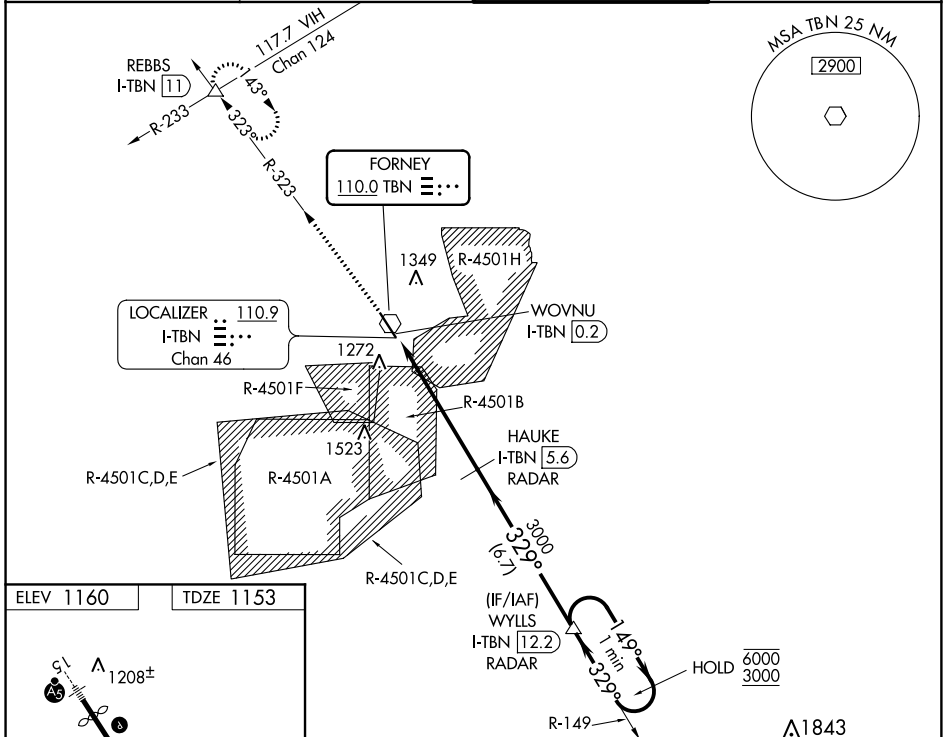
VOR TBN <b>110.0</b>	APP CRS <b>329°</b>	Rwy Idg TDZE Apt Elev	<b>5510</b> <b>1153</b> <b>1160</b>
-------------------------	------------------------	-----------------------------	---

# VOR RWY 33

WAYNESVILLE-ST ROBERT RGNL FORNEY FIELD (TBN)

DME or RADAR required. RADAR required for procedure entry.		MALS A2	MISSED APPROACH: Climb to 3000 on TBN VOR R-323 to REBBS INT/I-TBN LOC/DME 11 DME and hold.
<p><b>⚠</b> When local altimeter not received, use Rolla National altimeter setting and increase all MDAs 80 feet. Increase S-33 Cats C/D visibility to 1¼ SM. Procedure NA when R-4501B or R-4501H in use. Circling NA west of Rwy 15-33. Rwy 33 helicopter visibility reduction below ¾ SM NA. Inop table does not apply to Cats A and B. For inop ALS, increase Cats C and D visibility to 1¾ SM. Inop table does not apply to Cats A and B when using Rolla National altimeter setting.</p>			

D-ATIS <b>118.7 229.4</b>	KANSAS CITY CENTER <b>128.35 284.675</b>	FORNEY TOWER ★ <b>125.4 (CTAF) 0 268.7</b>	GND CON <b>123.75 256.8</b>
------------------------------	---	---	--------------------------------



3000 REBBS TBN R-323 I-TBN DME ANTENNA WOVNU I-TBN 0.2 FORNEY 110.0 HAUKE I-TBN 5.6 RADAR WYLLS I-TBN 12.2 RADAR One Minute Holding Pattern	3000	3000	3000	6000	3000
	1.3 NM	4.4 NM	6.7 NM		
CATEGORY	A	B	C	D	
S-33	1600-1 447 (500-1)				
<b>C</b> CIRCLING	1600-1 440 (500-1)	1660-1 500 (500-1)	1660-1½ 500 (500-1½)	1720-2 560 (600-2)	

# VOR RWY 33

NC-3, 10 OCT 2019 to 07 NOV 2019

NC-3, 10 OCT 2019 to 07 NOV 2019