

WAAS CH 45522 W09A	APP CRS 090°	Rwy Idg TDZE Apt Elev	6501 707 712
--	------------------------	-----------------------------	---

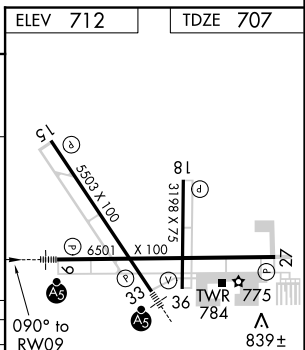
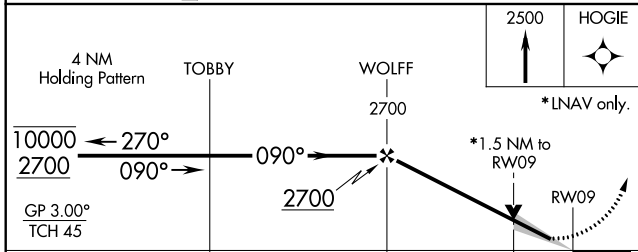
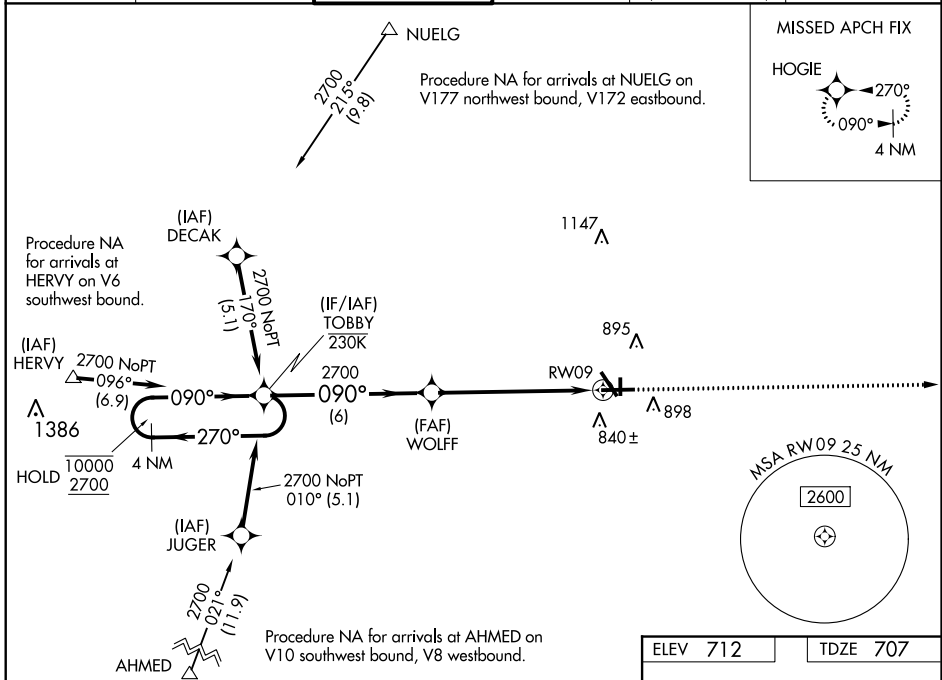
RNAV (GPS) RWY 9

AURORA MUNI (A.R.R.)

RNP APCH.		AURORA TOWER★		GND CON	CLNC DEL	UNICOM
<p>▼ For uncompensated Baro-VNAV systems, LNAV/VNAV NA below -20°C or above 54°C. For inop ALS, increase LNAV Cat C/D visibility to 1½ SM.</p>		<p>120.6 (CTAF) 0</p>		<p>121.7</p>	<p>121.7 (When tower closed)</p>	<p>122.95 123.5</p>



MISSED APPROACH:
Climb to 2500 direct
HOGIE and hold.



CATEGORY	A	B	C	D
LPV DA		957-½	250 (300-½)	
LNAV/VNAV DA		1035-½	328 (400-½)	
LNAV MDA	1220-½	513 (600-½)	1220-1	513 (600-1)
CIRCLING	1220-1	508 (600-1)	1220-1½ 508 (600-1½)	1320-2 608 (700-2)

MIRL Rwy 18-36 **0**
HIRL Rwy 15-33 and 9-27 **0**
REIL Rwy 15, 18, 27, and 36 **0**

EC-3, 10 OCT 2019 to 07 NOV 2019

EC-3, 10 OCT 2019 to 07 NOV 2019