

| | | | |
|----------------------------|------------------------|-----------------------------|---|
| LOC I-PWWT 111.1 | APP CRS 197° | Rwy Idg TDZE Apt Elev | 6000 442 444 |
|----------------------------|------------------------|-----------------------------|---|

ILS or LOC RWY 20

BREMERTON NATIONAL (PWT)

⚠ Circling NA for Cats C and D west of Rwy 2-20. When local altimeter setting not received, use Seattle-Tacoma Intl altimeter setting and increase all DA 45 feet, all MDA 60 feet and increase S-LOC 20 Cat C and D visibility 1/8 SM, Circling Cat A, C and D visibility 1/4 SM. For inop ALS, increase S-LOC 20 Cat C and D visibility to 2 SM. For inop ALS, when using Seattle-Tacoma Intl altimeter setting, increase S-LOC 20 Cat C and D visibility to 2 1/2 SM.

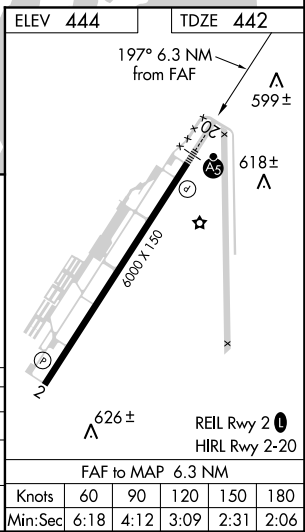
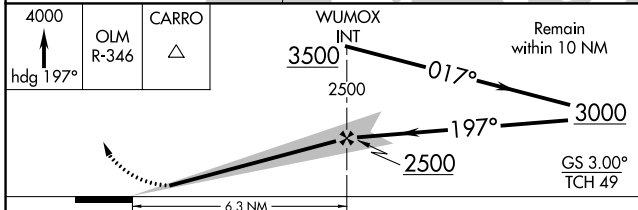
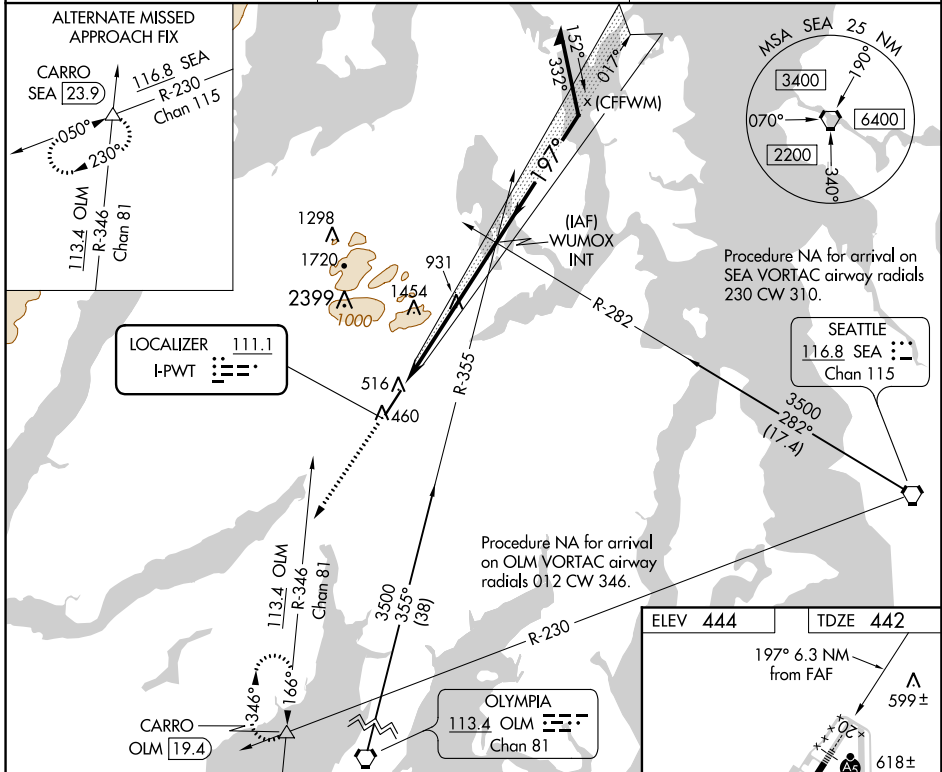


MISSED APPROACH: Climb to 4000 on heading 197° and OLM VORTAC R-346 to CARRO INT/OLM 19.4 DME and hold, continue climb-in-hold to 4000.

AWOS-3PT
121.2

SEATTLE APP CON
127.1 254.4 269.125

UNICOM
123.05 (CTAF)



| CATEGORY | A | B | C | D |
|----------|---------------------------|-------------------------------|-------------------------------|-------------------------------|
| S-ILS 20 | | 642-1/2 | 200 (200-1/2) | |
| S-LOC 20 | 1200-1/2 758 (800-1/2) | 1200-3/4 758 (800-3/4) | 1200-1 3/4 758 (800-1 3/4) | 758 (800-1 3/4) |
| CIRCLING | 1200-1 756 (800-1) | 1200-1 1/4 756 (800-1 1/4) | 1200-2 1/4 756 (800-2 1/4) | 1240-2 1/2 796 (800-2 1/2) |

NW-1, 10 OCT 2019 to 07 NOV 2019

NW-1, 10 OCT 2019 to 07 NOV 2019