

WAAS CH 49232 W02A	APP CRS 017°	Rwy Idg TDZE Apt Elev	6000 444 444
--	------------------------	-----------------------------	---

RNAV (GPS) RWY 2

BREMERTON NATIONAL (PWT)

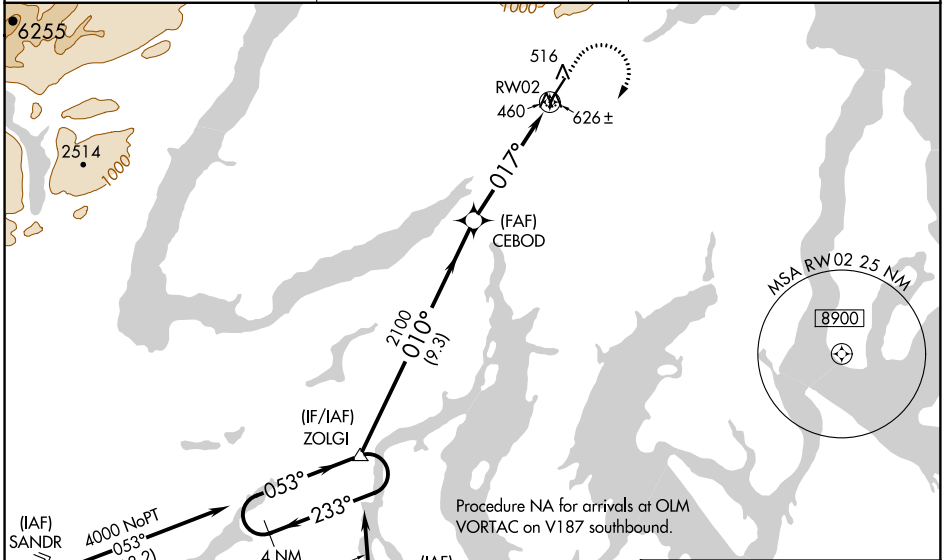
▼ Circling NA for Cats C and D west of Rwy 2-20. DME/DME RNP-0.3 NA. VDP and Baro-VNAV NA when using Seattle-Tacoma Intl altimeter setting. When local altimeter setting not received, use Seattle-Tacoma Intl altimeter setting and increase LPV DA to 817 and all visibilities ¼ SM; increase all LNAV/VNAV DA to 958 and all visibilities ¼ SM; increase all MDA 60 feet and LNAV/Circling Cats B, C and D ½ SM. Rwy 2 helicopter visibility reduction below ¾ SM NA.

MISSED APPROACH: Climb to 1200 then climbing right turn to 4000 direct ZOLGI and hold, continue climb-in-hold to 4000.

AWOS-3PT
121.2

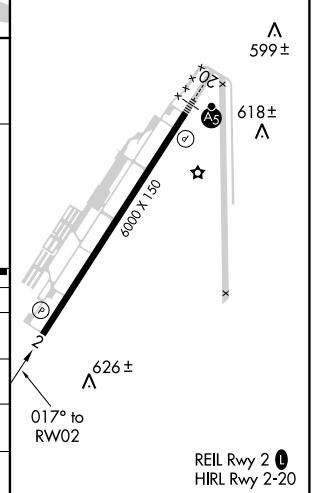
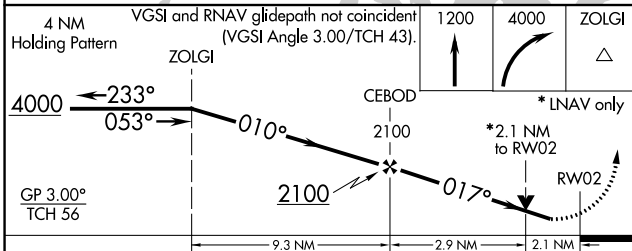
SEATTLE APP CON
127.1 254.4 269.125

UNICOM
123.05 (CTAF) 0



Procedure NA for arrivals at OLM VORTAC on V187 southbound.

ELEV	444	TDZE	444
------	-----	------	-----



CATEGORY	A	B	C	D
LPV DA	772-1 328 (400-1)			
LNAV/VNAV DA	913-1½ 469 (500-1½)			
LNAV MDA	1160-1 716 (800-1)	1160-2 716 (800-2)		
C CIRCLING	1160-1 716 (800-1)	1160-2 716 (800-2)	1240-2½ 796 (800-2½)	