

WAAS CH <b>45502</b> <b>W15A</b>	APP CRS <b>150°</b>	Rwy Idg <b>10702</b> TDZE <b>16</b> Apt Elev <b>17</b>
--	------------------------	--

# RNAV (GPS) RWY 15

CHENNAULT INTL (CWF)

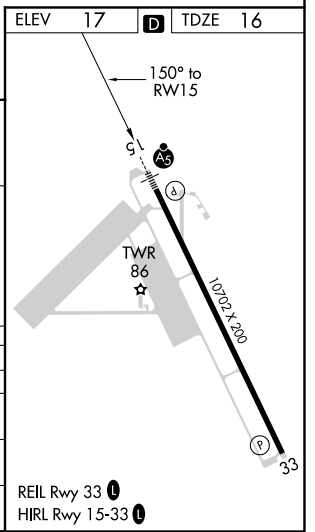
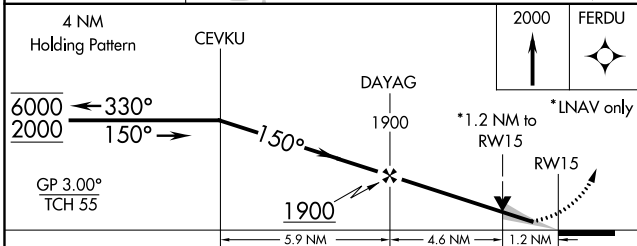
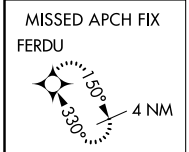
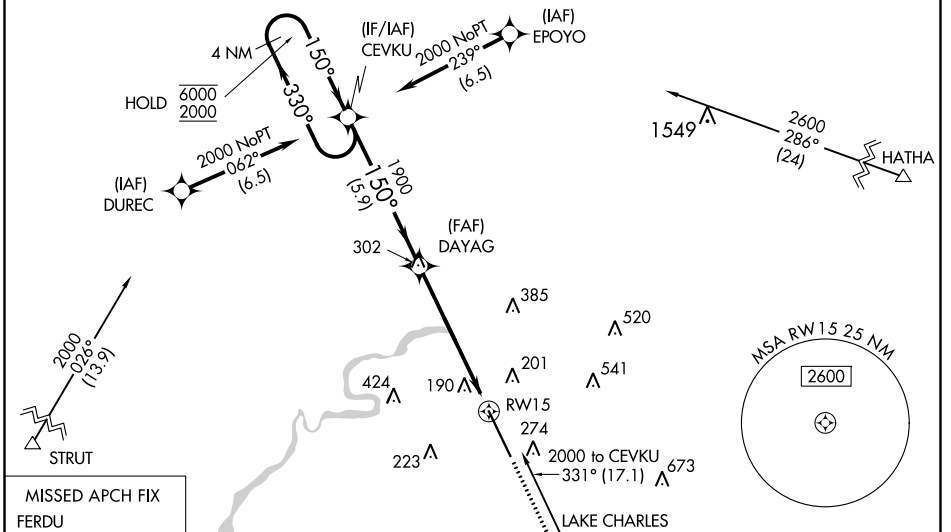
**RNP APCH.**

**ASR** Baro-VNAV and VDP NA when using Lake Charles Rgnl altimeter setting. For uncompensated Baro-VNAV systems, procedure NA below -15°C or above 43°C. When local altimeter setting not received, use Lake Charles Rgnl altimeter setting and increase all DA 16 feet and all MDAs DA 20 feet, increase LNAV Cats C/D visibility 1/8 SM. For inop ALS, increase LNAV/VNAV all Cats visibility to 1 3/8 SM. For inop ALS when using Lake Charles Rgnl altimeter setting increase LNAV/VNAV visibility all Cats to 1 3/8 SM.

**MALSR**

**MISSED APPROACH:** Climb to 2000 direct FERDU and hold.

ATIS <b>120.0</b>	LAKE CHARLES APP CON* <b>119.8 282.3</b>	CHENNAULT TOWER* <b>124.2 (CTAF) 0 290.4</b>	GND CON <b>121.65 275.8</b>	UNICOM <b>122.95</b>
----------------------	---	---	--------------------------------	-------------------------



CATEGORY	A	B	C	D
LPV DA		216-1/2	200 (200-1/2)	
LNAV/VNAV DA		507-1	491 (500-1)	
LNAV MDA	440-1/2	424 (500-1/2)	440-3/4	424 (500-3/4)
<b>C</b> CIRCLING	640-1	623 (700-1)	640-1 3/4	740-2 1/4
			623 (700-1 3/4)	723 (800-2 1/4)

# RNAV (GPS) RWY 15

CHENNAULT INTL (CWF)

SC-4, 10 OCT 2019 to 07 NOV 2019

SC-4, 10 OCT 2019 to 07 NOV 2019